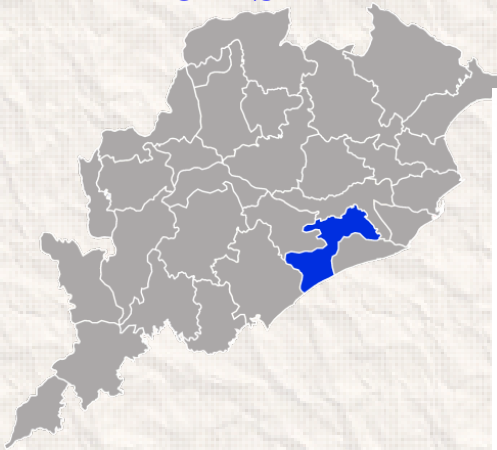




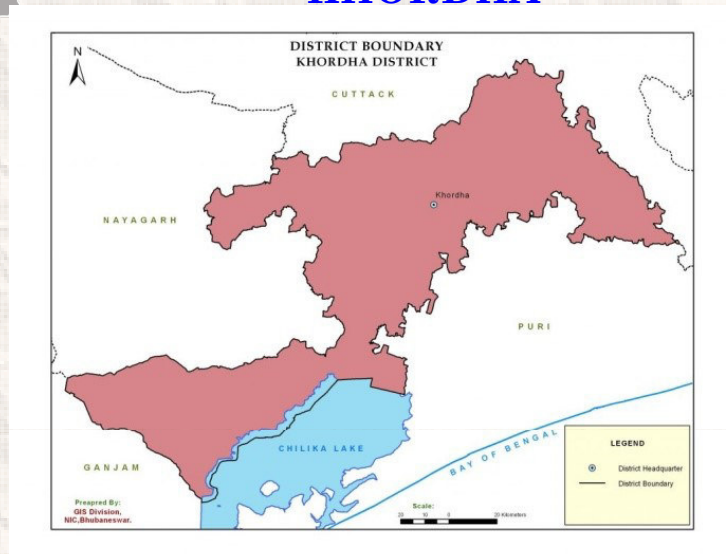
DISTRICT SURVEY REPORT (DSR) 2020
OF
KHORDHA DISTRICT, ODISHA
FOR
ROAD METAL / BUILDING STONE / BLACK STONE

**(FOR PLANNING & EXPLOITING OF MINOR
MINERAL RESOURCES)**

ODISHA



KHORDHA



As per Notification No. S.O. 3611(E) New Delhi,
25th July, 2018
MINISTRY OF ENVIRONMENT, FOREST AND CLIMATE CHANGE
(MoEF & CC)

COLLECTORATE, KHORDHA

CONTENT

SL NO	DESCRIPTION	PAGE NO
1	INTRODUCTION	1
2	OVERVIEW OF MINING ACTIVITIES IN THE DISTRICT	2
3	GENERAL PROFILE	2
4	GEOLOGY	4
5	DRAINAGE AND IRRIGATION PATTERN	7
6	LANDUSE PATTERN	7
7	SURFACE WATER & GROUND WATER SCENARIO	8
8	RAINFALL & CLIMATIC CONDITION	8
9	DETAILS OF MINING LEASES	9
10	DETAILS OF ROYALTY COLLECTED	9
11	DETAILS OF PRODUCTION	9
12	MINERAL MAP OF THE DISTRICT	9
13	LIST OF LOI HOLDERS ALONG WITH VALIDITY	10
14	TOTAL MINERAL RESERVE AVAILABLE IN THE DISTRICT	10
15	QUALITY/GRADE OF MINERAL	10
16	USE OF MINERAL	10
17	DEMAND & SUPPLY OF THE MINERAL	10
18	MINING LEASES MARKED ON THE MAP OF THE DISTRICT	10
19	DETAILS OF AREAS WHERE THERE IS A CLUSTER OF MINING LEASES	10
20	DETAILS OF ECO-SENSITIVE AREA	13
21	IMPACT ON THE ENVIRONMENT (AIR, WATER, NOISE, SOIL FLORA & FAUNAL, LAND USE, AGRICULTURE, FOREST ETC.) DUE TO MINING	13
22	REMEDIAL MEASURES TO MITIGATE THE IMPACT OF MINING ON THE ENVIRONMENT	14
23	RECLAMATION OF MINED OUT AREA (BEST PRACTICE ALREADY IMPLEMENTED IN THE DISTRICT, REQUIREMENT AS PER RULES AND REGULATION, PROPOSED RECLAMATION PLAN)	17
24	RISK ASSESSMENT & DISASTER MANAGEMENT PLAN	17

25	DETAILS OF THE OCCUPATION HEALTH ISSUES IN THE DISTRICT. (LAST FIVE- YEAR DATA OF NUMBER OF PATIENTS OF SILICOSIS & TUBERCULOSIS IS ALSO NEEDS TO BE SUBMITTED)	18
26	PLANTATION OF GREEN BELT DEVELOPMENT IN RESPECT OF LEASES ALREADY GRANTED IN THE DISTRICT	19
27	ANY OTHER INFORMATION	19

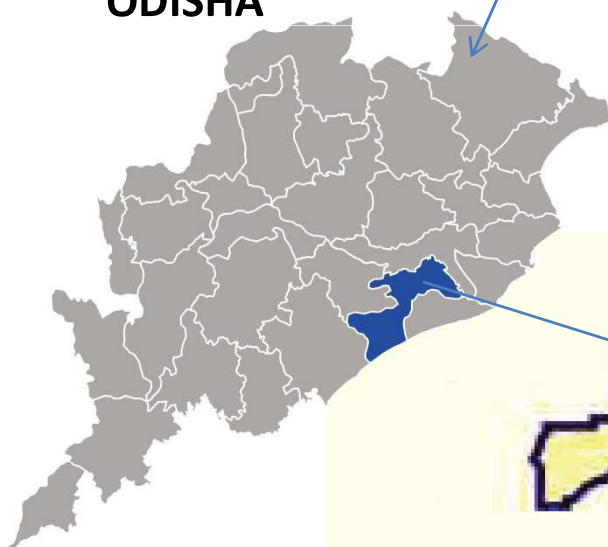
LIST OF PLATES

DESCRIPTION	PLATE NO
INDEX MAP OF THE DISTRICT	1
MAP SHOWING TAHASILS	2
ROAD MAP OF THE DISTRICT	3
MINERAL MAP OF THE DISTRICT	4
LEASE/POTENTIAL AREA MAP OF THE DISTRICT	5

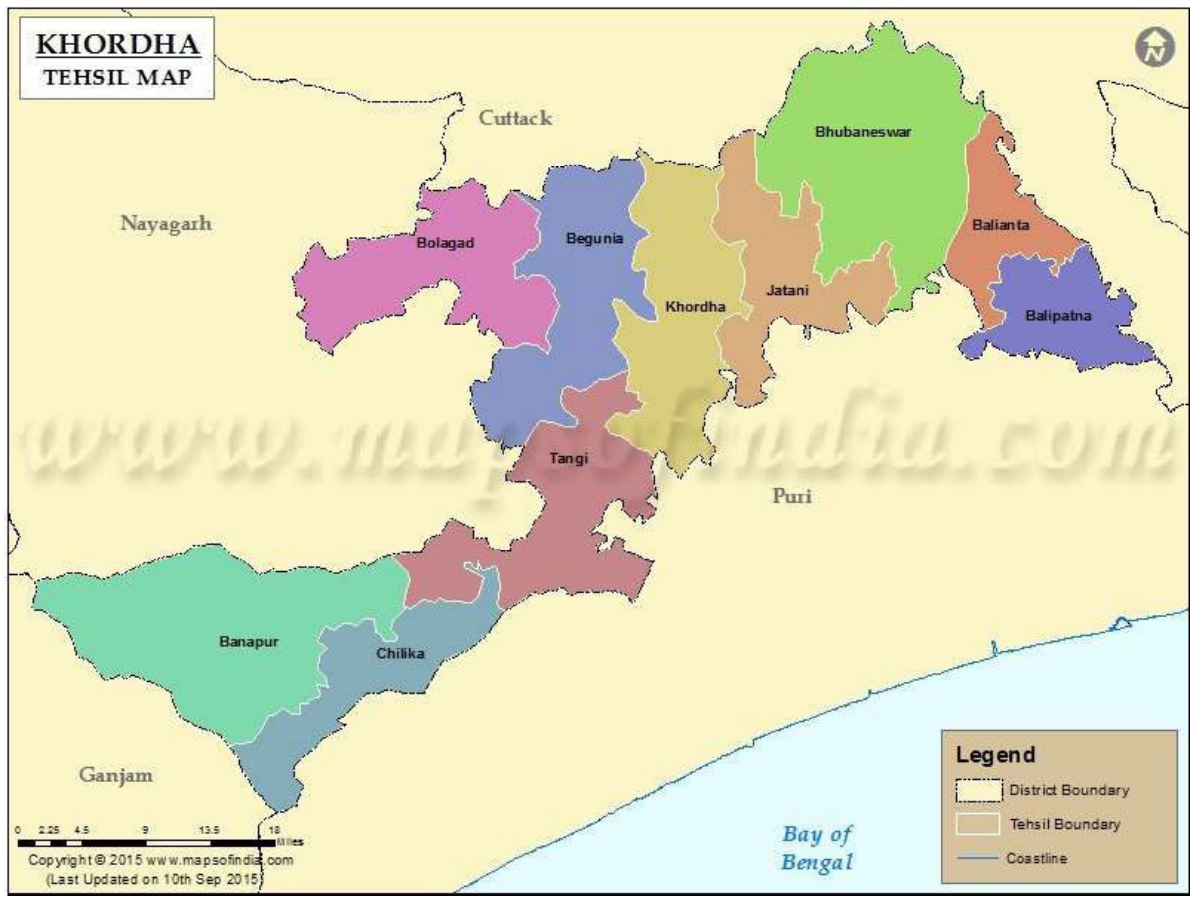
INDEX MAP



ODISHA



MAP SHOWING THE TAHASILS OF KHORDHA DISTRICT



MAP SHOWING THE MAJOR ROADS OF KHORDHA DISTRICT

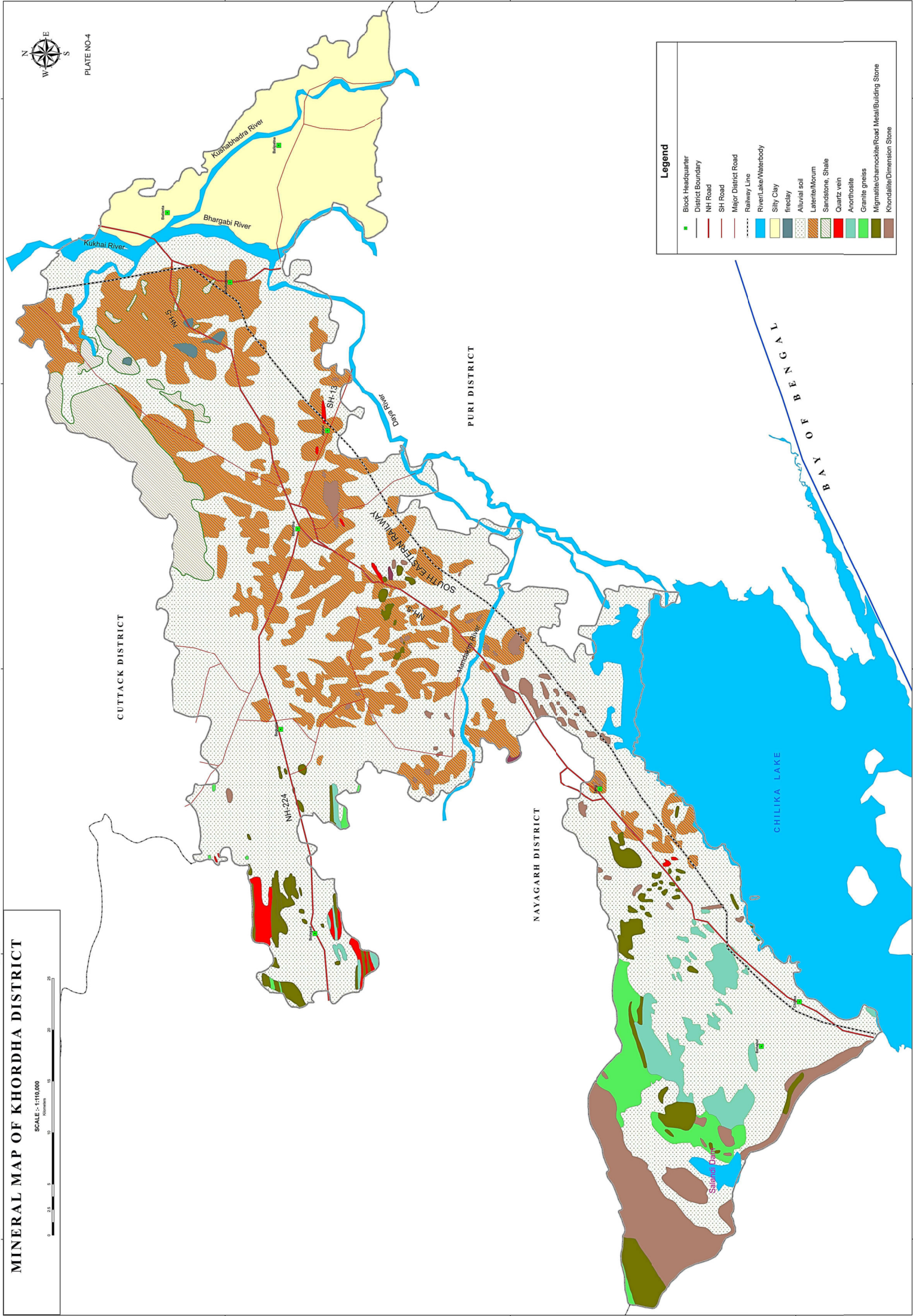


MINERAL MAP OF KHORDHA DISTRICT

SCALE: 1:110,000

0 2.5 5 10 15 20 Kilometers

PLATE NO-4



Legend

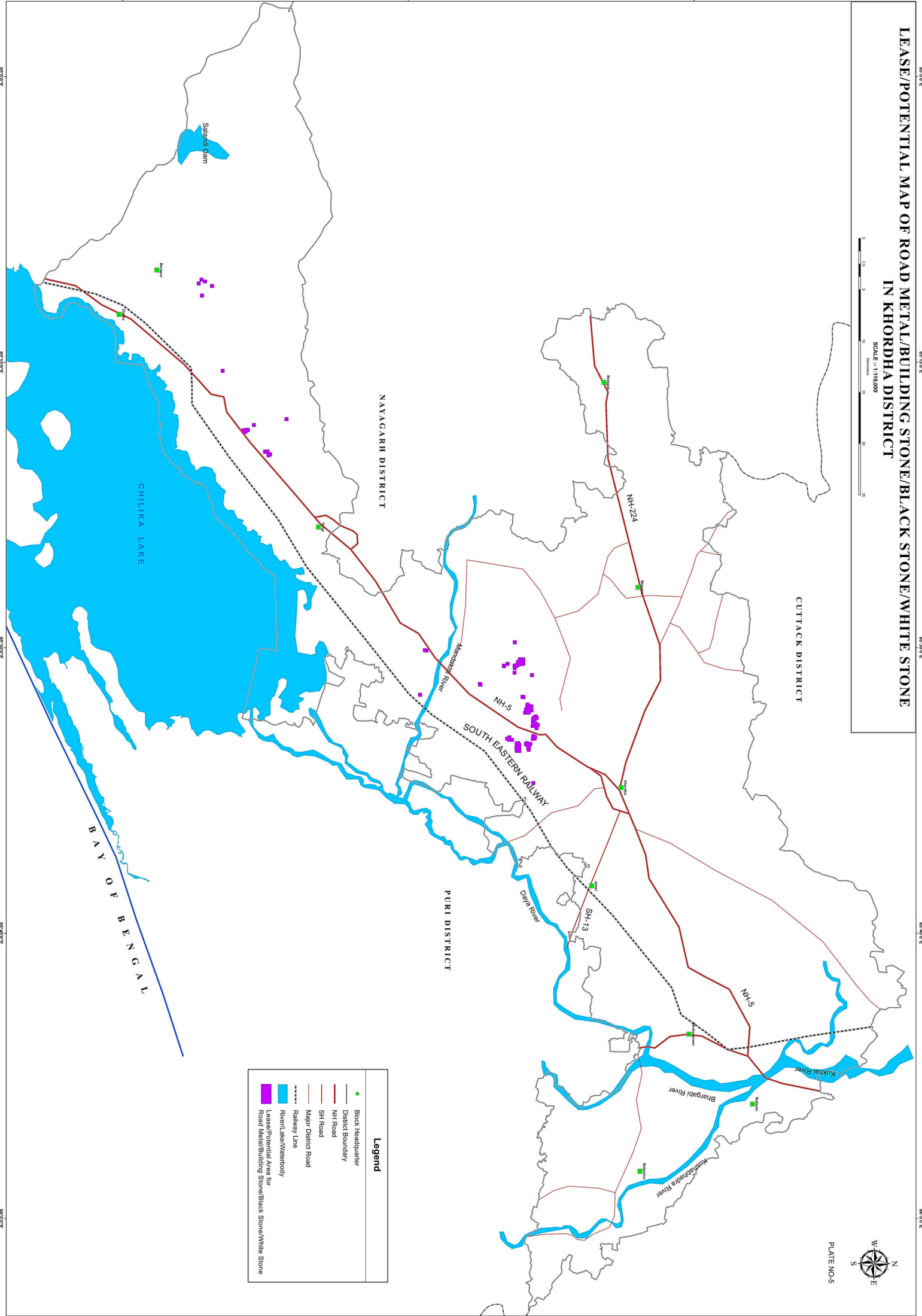
- Block Headquarter
- District Boundary
- NH Road
- SH Road
- Major District Road
- Railway Line
- River/Lake/Waterbody
- Silty Clay
- fireclay
- Alluvial soil
- Laterite/Morum
- Sandstone, Shale
- Quartz vein
- Auriferous
- Granite gneiss
- Migmatite/Charnockite/Road Metal/Building Stone
- Khondalite/Dimension Stone

LEASE/POTENTIAL MAP OF ROAD METAL/BUILDING STONE/BLACK STONE/WHITE STONE IN KHORDHA DISTRICT

SCALE :- 1:110,000



PLATE NO-5



Legend

- Block Headquarter
- District Boundary
- NH Road
- SH Road
- Major District Road
- Railway Line
- River/also Waterbody
- Lease/Potential Area for Road Metal/Building Stone/Black Stone/White Stone

PREFACE

In compliance to the notification issued by the Ministry of Environment and Forest and Climate Change Notification no. S.O.3611 (E) NEW DELHI dated 25-07-2018 the preparation of district survey report of road metal/building stone mining has been prepared in accordance with Clause II of Appendix X of the notification. Every effort has been made to cover road metal/building stone mining locations, future potential areas and overview of road metal mining activities in the district with all its relevant features pertaining to geology and mineral wealth. This report will act as a compendium of available mineral resources, geological set up, environmental and ecological set up of the district and based on data of various departments like Revenue, Water Resources, Forest, Geology and Mining in the district as well as statistical data uploaded by various state Government departments for preparation for district survey report. The main purpose of preparation of the present District Survey Report is to update the possible mineral resources and developing the mining activities along with other relevant data of the district keeping equilibrium with the involved environmental issues.

1. INTRODUCTION

Khordha district has a unique place in history as the last kingdom to be conquered by the British in 1803. Khordha is famous for the Paik revolution of 1817 led by Jai Rajguru and Bakshi Jagabandhu Bidyadhar. The district came into being with effect from 2nd October 1992.

Khordha district is located in the south-eastern part of Odisha, adjoining the coastal area. It occupies an area of about 2887.5 sq km. The district is bounded by latitudes 19^o 40' to 20^o 25' and longitudes is 84^o 56' to 86^o05' and occupies parts of degree sheets 73 H, L, P & 74 I,A,E. It is surrounded by Cuttack district to the north, Ganjam and part of Puri district to the south, Puri district to the east and Nayagarh district to the west. Bhubaneswar – Vizayanagaram segment of the East-coast railway runs through the district along NE –SW direction. National Highway No. 16 running almost sub-parallel to the East coast railway line, passes through Khordha, the district headquarters and Bhubaneswar the state capital. Khordha is about 30 km from Bhubaneswar and 12 km from Jatani, the nearest railway station of East coast railway. It has an average elevation of 75 m.

2. OVERVIEW OF MINING ACTIVITIES IN THE DISTRICT.

(a) In khordha district, presently there is one specified minor mineral lease i.e. for decorative stone in Village Tutumberpalli in favour of Sri Maa Granites. The lease area is 3.399 hec. The lease has been commenced from 22.06.2015 and the lease period is for 20 years. The mining operation of the said lease is currently stopped due to want of Consent to Operate from OSPCB.

There are two other potential sources; one is located at Naranagarh village and the other at Kurumpada village of Khordha Tahasil and both are within the area of ownership of Shree Jagannath Temple Administration, Puri. Both these areas have been reserved by Govt of Odisha for ML to M/s OMC Ltd which would be supplied to Shree Jagannath Temple Administration, Puri for beautification of Puri town.

Another one located at Santasinghpur village over an area of 3.996 hec has been under PL in favour of Sri Maa Granites which has commenced from dt. 14.02.2017 for 2 years. The final prospecting report along with ML application over the said PL area has been sent to Director of Mines, Odisha, Bhubaneswar for further examination at their end.

(b) Other than specified minor minerals such as river sand, laterite slabs, building stone/black stone/road metals etc. are also available in the district. Most of the building stone/black stone/road metals potentials are located in Khordha, Begunia and Tangi tahasils of the district. Others like laterite, morrum and earth are distributed in almost all tahasils.

3. GENERAL PROFILE

Geographical position	Longitude -84° 55' to 86° 5' Latitude- 19° 40' to 20° 25'
Area & Population	The district has an area of 2813 sq. km and 22.52 lakhs of population as per 2011 census. The district accounts for 1.81 percent of the states territory and shares 5.36 percent of the state's population. The density of population of the district is 800 per sq. Km as against 270 person per sq.km of the state. It has 1534 villages (including 178 un-inhabited villages) covering 10 blocks. 10 Tahasils and 2 sub-divisions. As per 2011 census the schedule caste population is

	297472 (13.2%) and schedule tribe population 115051 (5.1 %). The literacy percentage of the district covers 86.9 against 72.9 of the state.
Climate	The climate condition of the district is generally hot with high humidity during April and May and cold during December and January The monsoon generally breaks during the month of July
Industry & Mining	Khordha is an important centre of handloom industry. The lungi, napkin and saree produced here have an all Odisha market. Besides during the year 2014-15, 2187 nos. of small scale industries have been established with total capital investment of about Rs.10870.89 lakhs with 2176 nos. of Employment generated in the district. The district is also important for mining of minerals like decorative stone (Khondalite), building stone, laterite blocks, morrum & earth.
Power	Consumption of electricity in Khordha district during the year covers 1437.75 million units and revenue villages so far electrified as on 2013-14 is 1343 which constitutes 98.9 % to the total villages of the district.
Tourist Places	There are 19 nos. of tourist center such as Bhubaneswar, Dhauli, Khandgiri & Udayagiri, Nadankanan, Atri, Banapur, Barunei, Bhusandapur, Chilika (Barakul), Hirapur, Jayadev Kenduli, Gadamanitri, Rameswar, Madangiri (Mundiapada), Salia Dam-Barbara Hills, Kosalasuni, Thakuranipitha, Balipatna (Sisu Ananta Pitha), Shree Ananta Purusottam Dev (Jagulaipatna) and Sankat Mochan Mahavir Temple identified by department of Tourism and Culture, Odisha.
Transport & Communication	NH- 162.98 km SH- 25.97km Major district Road- 2555.08 km Other district road- 775.74 km Rural road- 1188.89 km

	<p>Inter village road- 2424.00 km</p> <p>Intra village road- 1471.24 km</p> <p>Besides, 117.39 Kms. of Railway lines with 23 nos. of railway stations and passenger halts are there in the district.</p>
Forest Area	<p>3 Forest Divisions are there in the district.</p> <p>Chilika Wildlife Division-</p> <p style="text-align: right;">Sunakhala DPF- 212.46 Ha</p> <p>Chandaka Wildlife Division-</p> <p style="text-align: right;">Chandaka-Dampara WL Sanctuary- 3765Ha</p> <p style="text-align: right;">RF- 9140.81 Ha</p> <p style="text-align: right;">PRF- 4519.88 Ha</p> <p>City Forest Division-</p> <p style="text-align: right;">RF- 317.28 Ha</p> <p>Total- 17955.43 Ha</p>
Health	<p>The medical facilities are provided by different agencies like Govt., Private individuals and voluntary organizations in the district. There were 282 nos. of the govt. Allopathic medical institutions with 965 beds facilities, 23 nos. of Homoeopathic dispensaries and 27 nos. of Ayurvedic dispensaries in the district during the year 2013-14.</p>

4. GEOLOGY

Western & south-western part of the district is occupied by the hilly terrain of Eastern Ghats. The hilly area in the west gradually passes on to the low undulating rugged terrain towards the central part of the district. In the northern, eastern and south-eastern sides, the district is surrounded by the flood plain and deltaic deposits of Mahanadi river basin. Parts of Chilika lake and its set of tributaries are the most conspicuous geomorphic features in the south. Daya, Bhargabi, Kuakhai and Kushabhadra rivers, emerging as distributaries from Mahanadi river system, drain southerly through the eastern flank of the district and merge either with the Chilika lake or with the Bay of Bengal. Kaipadar, about 10 km south west of Khordha, marks a water divide with Ran River flowing northerly to Mahanadi and Mandakini river

flowing southerly to Chilika. The highest elevation attained in the district is at 568 mts. in its southwestern corner, while Chilika represents the lowest at mean sea level.

The Major geology in the district can be broadly classified into Eastern Ghat Super Group of Archean to Proterozoic age, Proterozoic intrusive, Gondwana Super Group of Mesozoic and Pleistocene to Holocene age of Quaternary period of Cenozoic Era.

The rocks belonging to EGSG are mostly quartzite, khondalite and their variants, charnockite and pyroxene granulite. They are found mostly on the western and south western parts of the district. The Eastern Ghat Super Group of rocks have been intruded by plugs/apophyses of anorthosite, popularly known as Banpur anorthosite/ Chilika lake complex, and are found as cluster of anorthosite bodies around Banpur, Rambha and Balugaon region in the southern & western side of Chilika lake and partly within the lake also. This pluton is emplaced in the core of an antiform (Perraju, 1960). Sarkar et al. (1981) deciphered 3 phases of folding (F_1 - F_3) in the khondalite host rocks and considered emplacement of anorthositic complex syntectonically with F_3 . Xenoliths of metasediments (khondalite and calc-silicate gneisses) and charnockite in anorthosite and locally developed pyroxene hornfels grade skarn zones indicate the intrusive nature of the complex.

The rocks of Eastern Ghat Supergroup show foliation in NE-SW direction. Joint planes, wherever present, follow the same structural alignment. A prominent fault running ENE-WSW is recorded in north-western part of the district. Major lineaments trend in NE-SW direction. The NE-SW trending lineament passing through Baghamari houses a sulphurous hot spring at Atri and is of immense tectonic significance.

Granite gneiss of Archean to Proterozoic age, exposed in the western part of the district, are well foliated and are often garnetiferous. Quartz veins cut across the granulitic country at random.

The exposures belonging to Athgarh formation of Upper Gondwanas (Lower Cretaceous) mostly occur as a cluster forming upland in the north, NE parts of the district, i.e. west of Bhubaneswar. They are comprising dominantly of sandstones classified as quartz arenite, sub-lithic arenite and lithic wacke (Mishra, 1988; Pal, 1990), characteristically lacking in feldspars in clastic components. This also includes conglomerates, grits, carbonaceous shale, variegated shale and fire clay; most of

them as small lenticular bodies breaking the monotonous vastness of sandstones. Deep drilling in the coastal Odisha has indicated the extension of the formation below the alluvial cover of the Mahanadi delta and the coastal Tertiary succession (Pandya et al. 2000).

The earliest Quarternary deposit, the Bolgarh formation (Pleistocene age) occupies central and northern part of the district, overlying the khondalite group of rocks. It comprises hard crust laterite, latosol and also residual soil.

Brahmani formation (Pleistocene to Holocene) consists of residual soil and alluvium and occupies an appreciable part of the district and are particularly conspicuous in the eastern and southern part of the district adjoining Chilika lake.

Bankigarh formation (Middle to Late Holocene) is occupied by north and NE part of the district i.e. east of Bhubaneswar. It mostly comprises brownish silty clay and occur in the flood plain / deltaic plains of Mahanadi River basin.

The district lacks any major mineral deposit of economic significance. Few fire clay deposits located in the north-eastern part of the district are the only deposits of minor minerals that are being mined presently by Tata Refractories Ltd. The other deposits that are being profusely exploited as Dimension and decorative stone for construction material/polished slabs and artisan grade of khondalite around Tapanga and Kurumpada area.

Ground water occurs in the porous sedimentary formations and in the fractured igneous and metamorphic rocks in unconfined to confined conditions. The nala and gully erosion in the tributaries and distributaries of Mahanadi river basin and in Chilika lake are quite common.

Stratigraphy:

Phanerozoic	Quarternary	Mid to Late Holocene	Bankigarh Fm	Brownish silty clay
		Pleistocene to Holocene	Brahmani/ Mahanadi Fm	Residual soil and alluvium
		Pleistocene	Bolagarh Fm	Laterite/Latosol
	Gondwana Sup Gp	Lr Cretaceous	Athagarh Fm	Sandstone, Shale

Precambrian	Archean to Proterozoic	Eastern Ghat Sup Gp		Quart vein Granite gneiss Anorthosite Chanockite gp of rocks Khondalite gp of rocks Quartzite
-------------	------------------------	---------------------	--	--

5. DRAINAGE AND IRRIGATION PATTERN.

The drainage of the district is mainly controlled by rivers like Kuakhai, Kusabhadra, Bhargavi & Daya. Detail of the river system is narrated below.

S L NO	NAME OF RIVER	PLECE OF ORIGIN	ALTITUDE OF ORIGIN	TOTAL LENGTH IN THE DISTRICT (IN Km)	Area drained (sq.km)	%GE AREAS DRAINED IN THE DISTRICT	PROCESS OF DEPOSITION OF SEDIMENTS
1	Kushabhadra	Bhubanapur (khordha dist)	11.8m	30.0km	212.32sq.km	48.86%	Slow (2090 cum from 15-16 to 19-20)
2	Bhargavi	Balakati (khordha dist)	7.80 m	14.0 km	NA	NA	Slow(25000 cum from 15-16 to 18-19)
3	Kuakhai	Mukameswra	25.92 m	26.500	21.85	45.60	Moderate(77200 cum from 15-16 to 19-20)
4	Daya	Nathapur	18.180 m.	10.100	10.10	51.80%	slow(950 cum from 15-16 to 19-20)
5	Malaguni	Baunshagarh (Nayagarh dist)	21.20m	35	8.40	62.50%	slow
6	Hada	Hatibari (Nayagarh dist)	19.80m	14	0.92	60.87%	No deposition
7	Kusumidhar	Randa (khordha dist)	60m	33	1.32	100.00%	No deposition

During the year 2013-14, it is reported by District Agriculture Officer that the irrigation potential created during Kharif and Rabi are 52655 hectares and 20346 hectares respectively from all sources.

6. LANDUSE PATTERN

SI No	Landuse	Area in '000Ha
1	Forest Area	62
2	Misc.Tree & Groves	10
3	Permanent Pasture	5
4	Culturable Waste	8
5	Land Put to Non Agril Use	45

6	Barren & Unculturable Land	15
7	Current Fallow	21
8	Other Fallow	6
9	Net Area Sown	108
10	Mining	1
	Geographical Area	281

7. SURFACE WATER & GROUND WATER SCENARIO

The drainage systems i.e. rivers of the district gets filled with water during the monsoon and the gradually it decreases from the month of January to June of each year. In the summer season all rivers become almost dry excepting narrow flow of water within the basin.

The variation of ground water table in the district is as follows:

Depth of water level (mbgl)/ Period	April	August	November	January
Minimum	0.4	0.10	0.10	0.06
Maximum	14.2	6.20	9.15	12.60

8. RAINFALL & CLIMATIC CONDITION

The district is generally hot with high humidity during April and May and cold during December and January. The monsoon generally breaks during the month of July and continues till end of October. The temperature goes as high as up to 45°C in the summer and up to 7⁰-8⁰ C during peak winter.

The rainfall statistics of the district for last four years is given below:

MONTH – WISE RAINFALL (mm) DATA OF KHORDHA DISTRICT (LAST 5 YEARS)													
Year/ Month	April	May	June	July	August	Sept	Oct	Nov	Dec	Jan	Feb	March	Total
15-16	72.2	14.7	135.2	225.1	252.9	198.9	43.3	4.8	3.6	0.6	3.5	9.2	964
16-17	0.7	87.9	138.64	262.83	291.25	299.37	75.9	15.4	0	0.7	0	52.7	1225.39
17-18	10.26	17.58	164.93	402.23	313.31	239.07	249.3	59.96	20.02	0	0	0	1476.66
18-19	51.89	136.37	162.23	577.66	296.79	333.66	234	2	17.02	11	8.6	11.8	1843.02
19-20	23.48	185.59	140.48	370.29	317.46	426.77	328.23	2.12	0	12.2	50.32	28.47	15792.93
Avg.	31.706	88.428	2929.8	367.622	294.342	299.554	186.146	16.856	8.128	4.9	12.484	20.434	4260.4

9. DETAILS OF MINING LEASES OF ROAD METAL

Attached as Annexure.

10. DETAILS OF ROYALTY COLLECTED

Year-wise Calculation of Royalty (Rs) of Road metal

Sl.No	Name Of Tahasil	2015-16	2016-17	2017-18	2018-19	2019-20
1	Khordha	5252543	13566119	21202105	15218700	0
2	Bolagarh	0	444724	399699	580081	18000
3	Tangi	2279879	3780462	4686784	9945524	4296500
4	Chilika	0	0	0	0	65340
5	Begunia	0	1985584	0	0	15722060
6	Jatni	0	0	0	0	0
7	Balianta	0	0	0	0	0
8	Balipatana	0	0	0	0	0
9	Bhubaneswar	0	0	0	0	0
10	Banpur	0	0	0	0	0
TOTAL		75,32,422	1,97,76,889	2,62,88,588	2,57,44,305	2,01,01,900

Penalty collected in Rs

Sl.No	Name of Tahasil	2019-20
1	Bolagarh	852000
2	Chilika	237300
2	TOTAL	1089300

11. DETAILS OF PRODUCTION OF MINOR MINERAL

Yearwise Production of Road metal in cum

Sl.No	Name of Tahasil	2015-16	2016-17	2017-18	2018-19	2019-20
1	Khordha	60439	63383	65221	67829	0
2	Bolagarh	2414	2560.8	2698	3289.8	130
3	Tangi	41095	42213	45779	46565	28644
4	Chilika	0	0	0	0	503
5	Begunia	9968	9968	10080	10192	60000
6	Jatni	0	0	0	0	0
7	Balianta	0	0	0	0	0
8	Balipatana	0	0	0	0	0
9	Bhubaneswar	0	0	0	0	0
10	Balugaon	0	0	0	0	0
TOTAL		113916	118124.8	123778	127875.8	89277

12. MINERAL MAP OF THE DISTRICT

Attached as Plate No 4.

13. LIST OF LOI HOLDERS ALONG WITH VALIDITY

Attached as Annexure.

14. TOTAL MINERAL RESERVE AVAILABLE IN THE DISTRICT

Total mineral reserve of road metal/buildingstone/blackstone/white stone is 5,46,06,413.8 cum which may increase after detail investigation.

Details of the potential areas submitted as Annexure.

15. QUALITY/GRADE OF MINERAL

Road metal/building metal of the district are very much suitable for various construction purposes after its crushing and screening. The in-situ rocks are fractured making these unsuitable for decorative purpose.

16. USE OF MINERAL

Road metal/building metal of the district are used mainly for various construction purposes like road making, concrete making, dams etc.

17. DEMAND & SUPPLY OF THE MINERAL

The tentative annual demand is to the tune of 25 lakh cum of road metal and is mainly supplied from Khordha and Tangi tahasils of the district.

18. MINING LEASES MARKED ON THE MAP OF THE DISTRICT.

Attached as Plate No 5.

19. DETAILS OF AREAS WHERE THERE IS A CLUSTER OF MINING LEASES

Three clusters have been designated in Khordha Tahasil namely Cluster 1, Cluster 2 & Cluster 3. Details of the clusters are as below:

CLUSTER 1				
NAME OF SUB CLUSTER	SL NO	NAME OF THE LEASE	AREA IN HA	STATUS
Cluster-1A (Tangeni)	1	Tangeni building stone quarry	9.97	NOT RUNNING
Cluster-1B (Sankhari)	1	Sankhari East West (Ka)	4.82	
	2	Sankhari East West (Kha)	3.42	
	3	Sankhari East West (Ga)	3.98	
	4	Sankhari East West (Gha)	4.4	
	5	Sankhari South (Ka) Building stone quarry	2.02	
	6	Sankhari new building stone quarry joda amba (Gha)	4.05	
	7	Sankhari dhobi new building stone quarry (Uan)	3.04	
	8	Sankhari south new building stone quarry (Cha)	1.416	
	9	Sankhari south new building stone quarry	4.05	

		(Chha)		
	10	Sankhari South new building stone quarry	0.4	
Cluster-1C (Dhania)	1	Dhania west (Ka) Building stone quarry	3.37	
	2	Dhania west (Kha) Building stone quarry	1.01	
	3	Dhania west (Ga) Building stone quarry	1.73	
	4	Dhania west (Gha) Building stone quarry	1.07	
	5	Dhania new building stone quarry (Uan)	4.05	
	6	Dhania new building stone quarry east taraf (cha)	4.05	
	7	Dhania new building stone quarry south east(chha)	3.89	
	8	Dhania new building stone quarry (Ja)	1.82	
	9	Dhania new building stone quarry middle (Jha)	2.83	
	10	Dhania new building stone quarry utara taraf (Ta)	3.03	
	11	Dhania South East stone quarry	2.02	
	12	Dhania new building stone quarry utara taraf (Da)	4.55	
	13	Kaipadar New Building Stone quarry	4.05	
	14	Dhania (Gha)	0.51	

CLUSTER 1				
NAME OF SUB CLUSTER	SL NO	NAME OF THE LEASE	AREA IN HA	STATUS
Cluster-1B (Sankhari)	1	Kaipadar New Building stone quarry (Ga)	1.01	RUNNING
Cluster-1C (Dhania)	2	Dhania Building stone quarry (E)	1.35	
	3	Dhania Building stone quarry (F)	2.53	
	4	Kaipadar New Building stone quarry (Ka)	3.04	
	5	Kaipadar New Building stone quarry (Kha)	3.04	

CLUSTER 2				
NAME OF SUB CLUSTER	SL NO	NAME OF THE LEASE	AREA IN HA	STATUS
Cluster-2A (Golaputakhua)	1	Golaputakhua Building stone quarry (Ka)	23.86	RUNNING
Cluster-2C (Hatia)	2	Hatia New building stone quarry (Ka)	0.52	
	3	Hatia New building stone quarry (Ga)	1.05	
	4	Hatia New building stone quarry (Gha)	2.43	
	5	Hatia New building stone quarry (Uan)	2.43	

CLUSTER 2				
NAME OF SUB CLUSTER	SL NO	NAME OF THE LEASE	AREA IN HA	STATUS
Cluster-2A (Golaputakhua)	1	Golaputakhua Building stone quarry (Kha)	2.784	NOT RUNNING
	2	Kiajhari white stone quarry	0.400	
Cluster-2B (Duburi)	3	Duburi new building stone quarry	2.720	
Cluster-2C (Hatia)	4	Hatia New building stone quarry (Cha)	2.43	
	5	Hatia New building stone quarry (Chha)	3.64	
	6	Hatia New building stone quarry (Ja)	2.43	
	7	Hatia New building stone quarry (Jha)	2.43	
	8	Hatia New building stone quarry (Ta)	3.64	
	9	Hatia New building stone quarry (Tha)	3.24	
Cluster-2D (Kalinga)	10	Chhatrama (Ka) building stone quarry	3.53	
	11	Chhatrama (Kha) building stone quarry	3.24	
	12	Chhatrama (Ga) building stone quarry	2.475	
	13	Kalinga New Building stone quarry (Ka)	2.82	
	14	Kalinga New Building stone quarry (Kha)	3.01	
	15	Kalinga New Building stone quarry (Ga)	3.07	

CLUSTER 3				
NAME OF SUB CLUSTER	SL NO	NAME OF THE LEASE	AREA IN HA	STATUS
Cluster-3 (Dangarapada)	1	Kalachua Building stone quarry	3.12	RUNNING
	2	Dangarapada new Building stone quarry	1.01	

CLUSTER 3				
NAME OF SUB CLUSTER	SL NO	NAME OF THE LEASE	AREA IN HA	STATUS
Cluster-3 (Dangarapada)	1	Kalachua New Building stone quarry (Cha)	1.47	NOT RUNNING
	2	Kalachua New Building stone quarry (Chha)	2.43	
	3	Kalachua New Building stone quarry (Ja)	2.12	
	4	Kalachua New Building stone quarry (Jha)	3.84	
	5	Kalachua New Building stone quarry (Nian)	2.7	
	6	Kalachua New Building stone quarry (Ta)	2.74	
	7	Kalachua New Building stone quarry (Tha)	1.98	
	8	Dangarapada New Stone quarry (North	2.02	

		side)		
	9	Dangarapada White Bulding Stone quarry	0.81	
	10	Santarapur Building stone quarry	0.4	

20. DETAILS OF ECO-SENSITIVE AREA

Eco-Sensitive Zone of Chandaka-Damapada Wildlife Sanctuary is located within the district having an area of 37.65 sq km. In total 47 villages of Khordha district comes within the boundary of this WL sanctuary.

21.IMPACT ON THE ENVIRONMENT (AIR, WATER, NOISE, SOIL FLORA & FAUNAL , LAND USE , AGRICULTURE, FOREST ETC.) DUE TO MINING

Activities attributed to Mining:-

Generally, the environment impact can be categorized as either primary or secondary. Primary Impacts are those, which are attributed directly by the project. Secondary impacts are those which are indirectly induced and typically include the associated investment and changed pattern of social and economic activities by the proposed action.

The impact has been ascertained for the project assuming that the pollution due to mining activity has been completely spelled out under the base line environmental status for the entire ROM which is proposed to be exploited from the mines.

Impact on Ambient Air

Mining operation are carried out by opencast manual, semi mechanized/ mechanized methods generating dust particles due to various activities likes, excavation, loading, handling of mineral and transportation. The air quality in the mining areas depends upon the nature and concentration of emissions and meteorological conditions.

The major air pollutants due to mining activities include:-

- Particulate matter (dust) of various sizes.

- Gases, such as sulphur dioxide, oxides of nitrogen, carbon monoxide etc from machine & vehicular exhaust.

Dust is the single air pollutant observed in the open cast mines. Diesel operating drilling machines, blasting and movement of machineries/ vehicles produce NOx , SO2 and CO emissions, usually at low levels. Dust can be of significant nuance surrounding land user and potential health risk in some circumstances.

Water Impact

Sometimes the mining operation leads to intersect the water table causing ground water depletion. Due to the interference with surface water sources like river, nallah etc drainage pattern of the area is altered.

Noise Impact

Noise pollution mainly due to operation of machineries and occasional plying of machineries. These actives will create noise pollution in the surrounding area.

Impact on Land environment

The topography of the area will change certain changes due to mining activity which may cause some alteration to the entire eco system.

Impact on Flora & Fauna

The impact on biodiversity is difficult to quantify because of it's diverse and dynamic characteristics.

Mining activities generally result in the deforestation, land degradation, water, air and noise pollution which directly or indirectly affect the faunal and flora status of the project area.

However, occurrence and magnitude of these impacts are entirely dependent upon the project location, mode of operation and technology involved.

18. REMEDIAL MEASURES TO MITIGATE THE IMPACT OF MINING ON THE ENVIRONMENT:-

Air

Mitigation measures suggested for air pollution controls are to be based on the baseline ambient air quality of the project/cluster area and would include measures such as:

- Dust generation shall be reduced by using sharp teeth of shovels.
- Wet drilling shall be carried out to contain the dust particles.
- Controlled blasting techniques shall be adopted.
- Water spraying on haul roads, service roads and overburden dumps will help in reducing considerable dust pollution.
- Proper and regular maintenance of mining equipment's have to be undertaken.
- Transport of materials in trucks are to be covered with tarpaulin.
- The mine pit water can be utilized for dust suppression in and around mine area.
- Information on wind diction and meteorology are to be considered during planning, so that pollutants, which cannot be fully suppressed by engineering techniques, will be prevented from reaching the nearby agricultural land, if any.
- Comprehensive greenbelt around overburden dumps and periphery of the mining projects/clusters has to be carried out to reduce to fugitive dust transmission from the project area in order to create clean & healthy environment.

Water

- Construction of garland drains and settling tanks to divert surface run –off of the mining area to the natural drainage.
- Construction of checks dams/ gully plugs at strategic places to arrest silt wash off from broken up area.
- Retaining walls with weep hole are to be constructed around the mine boundaries to arrest silt wash off.

- The mined out pits shall be converted in to the water reservoir at the end of mine life. This will help in recharging ground water table by acting as a water harvesting structure.
- Periodic analysis of mine pit water and ground water quality in nearby villages are to be undertaken.
- Domestic sewage from site office & urinals/latrines provided within ML/QL areas is to be discharged in septic tank followed by soak pits.

NOISE

- Periodic maintenance of machineries, equipments shall be ensured to keep the noise generated within acceptable limit.
- Development of thick green belt around mining/cluster area, haul roads to reduce the noise.
- Provision of earplugs to workers exposed to high noise generating activities like blasting, excavation site etc. Worker and operators at work sites will be provided with earmuffs.
- Conducting periodical medical checkup of all workers for any noise related health problems.
- Proper training to personnel to create awareness about adverse noise related effects.
- Periodic noise monitoring at locations within the mining area and nearby habitations to assess efficacy of adopted control measures.
- During blasting optimum spacing, burden and charging of holes will be made under the supervision of competent qualified mines foreman, mate etc.

Biological Environment

- Development of green belt/gap filling saplings in the safety barrier left around the quarry area/ cluster area.
- Carrying out thick greenbelt with local flora species predominantly with long canopy laves on the inactive mined out upper benches.
- Development of dense poly culture plantation using local floral species in the mining areas at conceptual stage if the mine is not continued much below the general ground level.
- Adoption of suitable air pollution control measures as suggested above.
- Transport of materials in trucks covered with tarpaulin.

23. RECLAMATION OF MINED OUT AREA (BEST PRACTICE ALREADY IMPLEMENTED IN THE DISTRICT, REQUIREMENT AS PER RULES AND REGULATION, PROPOSED RECLAMATION PLAN) :-

As per statute all mines/quarries are to be properly reclaimed before final closure of the mine. Reclamation of exhausted mines are planned to be undertaken in below three possible means:

1. If, substantial amount of waste is there, the exhausted quarry can be fully or partly backfilled using the stored waste. The backfilled areas are to be brought under plantation of local species.
2. If the generation of waste is much less as in the case of minor mineral mining, the exhausted quarries can be reclaimed by
 - a. Plantation on the broken up surface if the depth of quarry is not much below the surrounding surface level.
 - b. Converted to water reservoir after stabilization of the slopes if the exhausted quarry continues much below the surrounding surface level. It is preferred to cordon the water reservoir either through wire fencing or retaining wall with plantation from the safety point of view.

Most of the quarry/mining lease areas are yet to be exhausted from ore point of view. Hence, reclamation would be taken up only after exhaustion of the ore/mineral content from these areas. The exhausted minor mineral quarries of the district have been converted to water reservoirs.

24. RISK ASSESSMENT & DISASTER MANAGEMENT PLAN

The only risk involved related to mining of minor mineral excepting natural calamities is slope failure and probable accidents due to high and ill maintained bench walls. This can only be addressed through making of regular benches and undertaking mining in benching pattern.

The disaster management plan (DMP) is supposed be a dynamic, changing, document focusing on continual improvement of emergency response planning and arrangements.

The disaster management plan is to be aimed to ensure safety of life, protection of environment, protection of installation, restoration of production

and savage operations in this same order of priorities. For effective implementation of the disaster management plan, it should be widely circulated through rehearsal/induction conducted by the respective department from time to time.

General responsibilities of employees' during an emergency:

During an emergency, it becomes more enhanced and pronounced when an emergency warning is raised, the worker in charge, should adopt safe and emergency shut down and attend to any prescribed duty. If no such responsibility is assigned, the workers should adopt a safe course to assembly point and wait instructions. He should not resort to spread panic. On the other hand, he must assist emergency personnel towards objectives of DMP.

Co-ordination with local authorities:

The Mine Manger who is responsible for emergency will always keep a jeep ready at site. In case of any eventuality, the victim will be taken to the nearby hospitals after carrying out the first aid at the site. The Manger should collect and have adequate information of the nearby hospitals, fire station, police station, village panchayat heads, taxi stands, medical shops, district revenue authorities etc. and use them efficiently during the case of emergency.

25. DETAILS OF THE OCCUPATION HEALTH ISSUES IN THE DISTRICT. (LAST FIVE- YEAR DATA OF NUMBER OF PATIENTS OF SILICOSIS & TUBERCULOSIS IS ALSO NEEDS TO BE SUBMITTED):-

As per the guidelines of the Mine Rules 1995, occupational health safety has been stipulated by the ILO/WHO. The proponent's will take necessary precautions to 18ulfill the stipulations. Normal sanitary facilities have to be provided within the lease area. The management will carry out periodic health checkup of workers.

Occupational hazards involved in mines are related to dust pollution, noise pollution, blasting and injuries from moving machineries & equipment and fall from high places. DGMS has given necessary guidelines for safety against these occupational hazards. The management has to strictly follow these guidelines.

All necessary first aid and medical facilities are to be provided to the workers. The mine shall be well equipped with personal protective equipment (PPE). Further, all the necessary ported equipments such as helmet, safety goggles, earplugs, earmuffs etc are to be provided to mine workers as per Mines Rules. All operators and mechanics are to be trained to handle fire fighting equipments.

TUBERCULOSIS DATA RNTCP KHORDHA

YEAR	APR	MAY	JUN	JUL	AUG	SEP	OCT	NOV	DEC	JAN	FEB	MAR	TOTAL
15-16	95	85	83	93	87	75	86	79	78	92	88	84	1025
16-17	96	84	86	88	78	69	104	103	98	118	115	128	1167
17-18	127	113	130	142	102	105	97	83	84	121	102	140	1346
18-19	160	156	124	121	119	116	98	124	123	117	142	130	1530
19-20	162	142	119	152	140	156	138	130	120	150	150	142	1701
TOTAL	640	580	542	596	526	521	523	519	503	598	597	624	6769
AVG.	128	116	108	119	105	104	105	104	101	120	119	125	1354

There is no case of Silicosis found in khordha within the time frame mentioned above.

26. PLANTATION OF GREEN BELT DEVELOPMENT IN RESPECT OF LEASES ALREADY GRANTED IN THE DISTRICT

As most of the minor mineral mines/quarries of the district are yet to be exhausted of their mineral content no sort of reclamation measures including plantation has been undertaken excluding gap plantation of local species in the peripheral safety zones of the quarries/ clusters and in some of the haul roads.

27. ANY OTHER INFORMATION

Nil

SL NO	NAME OF TAHA SIL	NAME OF VILLAGE	STATUS	NAME OF SOURCE	LAND SCHEDULE	AREA IN AC	NAME OF LESSEE	ADDRESS & CONTACT NO OF LESSEE	DATE OF REGISTRATION OF LEASE DEED	NO & DATE OF GRANT OF ENV CLEARANCE	NAME OF SUCCESSFUL BIDDER	ADDRESS & CONTACT NO OF SUCCESSFUL BIDDER	LATITUDE			LONGITUDE			RESERVE IN CUM AS PER MINING PLAN
													D E G R E E	M I N U T E	S E C O N D	D E G R E E	M I N U T E	S E C O N D	
1	Khordha (SJTA)	Kaipadar	Lease period completed & to be auctioned.	Road Metal / Kaipadar NBSQ (Ga)	Khata No.849, Plot No. 3502(P)	2.5							20	6	18.6	85	33	21	100000
2	Khordha (SJTA)	Kaipadar	-do-	Road Metal / Dhania BSQ (E)	Khata No.849, Plot No. 2847(P)	3.345							20	6	43.8	85	34	13.8	130000
3	Khordha (SJTA)	Kaipadar	-Do-	Road Metal / Dhania BSQ (F)	Khata No.849, Plot No. 2847(P)	6.241							20	6	43.4	85	34	8.5	2400000
4	Khordha (SJTA)	Kaipadar	-do-	Road Metal / Kaipadar NBSQ (Ka)	Khata No.849, Plot No. 2867(P), 2825 (P)	7.5							20	6	37.9	85	33	46.3	300000
5	Khordha (SJTA)	Kaipadar	-do-	Road Metal / Kaipadar NBSQ (Kha)	Khata No.849, Plot No. 2864(P)	7.5							20	6	32.5	85	33	52	300000
6	Khordha (SJTA)	Nijagarhtapanga	-do-	Road Metal / Hatia (Gha)	Khata No.832/1, Plot No. 277(P)	6							20	5	49.5	85	35	6.1	240000
7	Khordha (SJTA)	Kiajhari	-do-	Road Metal/ Golaputakhua (Ka)	Khata No. 53/2, Plot No. 1947(P)	58.97							20	5	10.5	85	34	46.5	1600000
8	Khordha (SJTA)	Malipada	-do-	Road Metal/ Hanumantia	Khata no.- 733, Plot no. 6(P)	10.549							20	0.6	0.7	85	32	28.3	400000

				building stone quarry (Ka)																
9	Khordh a (SJTA)	Malipa da	To be auction ed	Road metal/ Malipad a White stone quarry	Khata no.- 726/2, plot no. 9(P)	1								2 0	6	2. 7	8 5	3 2	3 6	25225
10	Khordh a (SJTA)	Kaipad ar	-do-	Road Metal / Sankhari -Dhobi NBSQ (Uan)	Khata No.849, Plot No. 3502(P)	7.5								2 0	6	1 5	8 5	3 2	5 9	320000
11	Khordh a (SJTA)	Nijagar htapa nga	-do-	Road Metal/ Hatia (Ka)	Khata No.832/ 1, Plot No. 276(P)	1.275								2 0	5	4 5. 4	8 5	3 5	0. 9	45000
12	Khordh a (SJTA)	Nijgarh tapan ga	-do-	Road Metal / Hatia (Ga)	Khata No.832/ 1, Plot No. 276(P),2 77(P)	2.6								2 0	5	4 1. 2	8 5	3 5	1. 9	96000
13	Khordh a (SJTA)	Nijgarh tapan ga	-do-	Road Metal / Hatia (Uan)	Khata No.832/ 1, Plot No. 277(P)	6								2 0	5	4 9. 5	8 5	3 5	1 4. 7	240000
14	Khordh a (SJTA)	Saman tarapur	-do-	Road Metal / Samant arapur New Building Stone Quarry	Khata No.349/ 1, Plot No. 1250(P), 1251(P)	1								2 0	6	1. 6	8 5	3 0	5 0. 7	28000
15	Khordh a (SJTA)	Chhatr ama	Auction ed during 17-18 but EC wanting	Road Metal / Kabara (Kha)	Khata No.401, Plot No.1498 (P),1499(P)	8.115								2 0	6	3 7. 2	8 5	3 4	4 6. 6	320000
16	Khordh a (SJTA)	Kaipad ar	-do-	Road Metal / Dhanica NBSQ Uttar taraf (Uan)	Khata No.849, Plot No. 2847(P)	10								2 0	6	3 9. 8	8 5	3 4	5. 3	400000

17	Khordha (SJTA)	Kaipadar	-do-	Road Metal / Sankhari South NBSQ (Chha)	Khata No.849, Plot No. 3502(P)	10									20	6	8	85	33	25	400000
18	Khordha (SJTA)	Kaipadar	-do-	Road Metal / Sankhari - Jodaamba (Gha) NBSQ	Khata No.849, Plot No. 3502(P)	10									20	6	16.8	85	33	24.1	400000
19	Khordha (SJTA)	Chhatrama	Auctioned during 18-19 but stayed by HHC	Road Metal / Kabara (Ka)	Khata No.401, Plot No. 1672(P)	6.584									20	6	33.9	85	34	38.2	250000
20	Khordha (SJTA)	Chhatrama	-do-	Road Metal / Chhatrama (Ka)	Khata No.401, Plot No. 1821(P)	8.734									20	6	18.9	85	35	22.1	430000
21	Khordha (SJTA)	Chhatrama	-do-	Road Metal / Chhatrama (Kha)	Khata No.401, Plot No. 1821(P)	8.00									20	6	19.7	85	35	13.1	420000
22	Khordha (SJTA)	Chhatrama	-do-	Road Metal / Chhatrama (Ga)	Khata No.401, Plot No. 1821(P), 1769(P)	6.117									20	6	24.3	85	35	3.2	300000
23	Khordha (SJTA)	Jhinkijhari	-do-	Road Metal / Kalinga (Ka)	Khata No.602, Plot No. 150(P)	6.963									20	6	13.4	85	35	0.7	350000
24	Khordha (SJTA)	Jhinkijhari	-do-	Road Metal / Kalinga (Kha)	Khata No.602, Plot No. 150(P)	7.438									20	6	14.6	85	35	6.5	400000
25	Khordha (SJTA)	Jhinkijhari	-do-	Road Metal / Kalinga (Ga)	Khata No.602, Plot No. 150(P)	7.575									20	6	16.8	85	35	14.9	500000
26	Khordha (SJTA)	Jhinkijhari, Chhatrama	Stayed by HHC	Road metal / Tanguri no.- 1 BSQ	Khata no.- 557/1, Plot No.- 142(p), 1769(p)	10.2									20	6	9.9	85	35	4.1	1000000
						10.2															
						10.14															

					& 1769(p)																	
27	Khordha (SJTA)	Chhatrama	-do-	Road Metal / Kabara (Ga)	Khata No.401, Plot No. 1499(P)	7.179										20	6	39	85	34	42	2750000
28	Khordha (SJTA)	Chhatrama	-do-	Road Metal / Kabara (Gha)	Khata No.401, Plot No. 1678(P)	1.5										20	6	32.1	85	34	47.3	50000
29	Khordha (SJTA)	kaipadar	-do-	Road metal / Sankari south (kha) BSQ	Khata No.849, Plot No. 3502(P)	2.5										20	6	14.5	85	33	5.5	96000
30	Khordha (SJTA)	kaipadar	-do-	Road metal / Sankari south (Ga) BSQ	Khata No.849, Plot No.- 3502(P)	2.5										20	6	12.7	85	33	24.9	100000
31	Khordha (SJTA)	Kaipadar	Auctioned during 15-16 but stayed by HHC	Road Metal /Tangeni Building Stone Quarry	Khata No. 849, Plot No. 3222	24.63	Biraja Prasad Das	Sastri Nagar, BBSR								20	6	27.5	85	33	5.4	3002836
32	Khordha (SJTA)	Nijagarhtapanga	Auctioned during 18-19 but EC wanting	Road Metal / Hatia NBSQ (Ta)	Khata No.832/ 1, Plot No. 277(P)	9	M/s Fortune Associates Pvt Ltd,	Flat No B-202, 2nd floor, Sriniketan Apartment, Badbil, Odisha								20	5	41.35	85	35	24.98	240352
33	Khordha (SJTA)	Nijagarhtapanga	-do-	Road Metal / Hatia NBSQ (Cha)	Khata No.832/ 1, Plot No. 277(P)	6	Sasmita Roultry	Nijagarhtapanga, Khordha								20	5	48.88	85	35	19.01	311875
34	Khordha (SJTA)	Nijagarhtapanga	-do-	Road Metal / Hatia NBSQ (Chha)	Khata No.832/ 1, Plot No. 277(P)	9	Jagdish Shankar Sahoo, MD, Satya Multiplex Pvt Ltd	N/6- 321, IRC Village, BBSR								20	5	40.79	85	35	13.59	505919

35	Khordha (SJTA)	Nijagarhtapanga	-do-	Road Metal / Hatia NBSQ (Ja)	Khata No.832/1, Plot No. 277(P)	6	Sasmita Routroy	Nijagarhtapanga, Khordha						20	5	422	85	35	922	174980
36	Khordha (SJTA)	Nijagarhtapanga	-do-	Road Metal / Hatia NBSQ (Jha)	Khata No.832/1, Plot No. 277(P)	6	Prasanna Ku Sahoo	Palatana Padia, Khordha						20	5	4079	85	35	1784	300122
37	Khordha (SJTA)	Nijagarhtapanga	-do-	Road Metal / Hatia NBSQ (Tha)	Khata No.832/1, Plot No. 277(P)	8	Sibashankar Samantaray (applied for surrender)	Baruneisahi, Jajarsingh, Khordha						20	5	4943	85	35	2568	451374
38	Khordha (SJTA)	Nijagarhtapanga	-do-	Road Metal/ Duburi New Building Stone Quarry	Khata No.832/1, Plot No. 944	6.72	Sukant Ku Biswal	Plot 669, Pratiksha, Ekamra Vihar, IRC village, BBSR						20	5	2616	85	34	5043	119279
39	Khordha (SJTA)	Nijagarhtapanga	-Do-	Road Metal / Golaputakhua (Kha)	Khata No.832/1, Plot No. 953	6.88	Droupadi Srichandan	Gurujanga, Khordha						20	5	1718	85	34	5013	234150
40	Khordha (SJTA)	Kaipadar	-Do-	Road Metal / Dhanial West (Ka)	Khata No.849, Plot No. 2900(P), 2825(P)	8.323	Subrat Kumar Nayak	Plot No 54, Bhudheswari Colony, Laxmisagar, BBSR						20	6	3374	85	33	4204	342418
41	Khordha (SJTA)	Kaipadar	-do-	Road Metal/ Dhanial West (Kha)	Khata No.849, Plot No. 2900(P)	2.509	Meenakhi Pradhan	Samantarapur, Khordha						20	6	4106	85	33	3681	115150
42	Khordha (SJTA)	Kaipadar	do	Road Metal / Dhanial West (Ga)	Khata No.849, Plot No. 2825(P)	4.279	Pravasin Mohanty	W/o-Ranjan Ku Mohanty, NA-45, GGP Colony, Rasulgad, BBSR						20	6	4105	85	33	3679	217352

43	Khordha (SJTA)	Kaipad ar	-do-	Road Metal / Dhanias West (Gha)	Khata No.849, Plot No. 2900(P), 2825(P)	2.655	Subrat Kumar Nayak	Plot No 54, Bhudheswari Colony, Laxmisagr, BBSR						20	6	38.51	85	33	41.51	79187
44	Khordha (SJTA)	Kaipad ar	-do-	Road Metal / Dhanias Uttar Taraf (Ta)	Khata No.849, Plot No. 2847(P)	7.5	Soubhagya Chandra Das	Bypass road, Talcher, Anugul						20	6	41.59	85	33	59.88	701043
45	Khordha (SJTA)	Kaipad ar	-do-	Road Metal / Dhanias Uttar Taraf (Da)	Khata No.849, Plot No. 2825(P)	11.25	Ajay Agrawal	Plot No 143, VIP colony, Nayapalli, IRC Village, BBSR						20	6	38.5	85	33	38.16	486259
46	Khordha (SJTA)	Kaipad ar	-do-	Road Metal / Dhanias Southeast New BS quarry	Khata No.849, Plot No. 2864(P)	5	Soubhagya Chandra Das	Bypass road, Talcher, Anugul						20	6	33.38	85	33	57.45	203344
47	Khordha (SJTA)	Kaipad ar	-do-	Road Metal / Dhanias NBS quarry East Taraf (Cha)	Khata No.849, Plot No. 2864(P)	10								20	6	30.9	85	34	6.7	550000
48	Khordha (SJTA)	Kaipad ar	-do-	Road Metal / Dhanias NBSQ (Ja)	Khata No.849, Plot No. 2864(P)	4.5								20	6	33.2	85	34	0.5	250000
49	Khordha (SJTA)	Kaipad ar	-do-	Road Metal / Dhanias NBSQ Middle (Jha)	Khata No.849, Plot No. 2847(P)	7	Rajendra Prasad Singh	New Routpatana, Buxi Bazar, Cuttack						20	6	37.98	85	34	6.13	518472
50	Khordha (SJTA)	Kaipad ar	-do-	Road Metal / Dhanias NBSQ South East (Chha)	Khata No.849, Plot No. 2864(P)	9.6	Jatindra Das	S/o- Late Basudev Das, Kakata, Kendrapada						20	6	33.34	85	37	7.05	641410

51	Khordha (SJTA)	Kaipadar	-do-	Road Metal / Dhania NBSQ Uttar Taraf (Tha)	Khata No.849, Plot No. 2847(P)	3									20	6	47.8	85	34	3.9	120000
52	Khordha (SJTA)	Kaipadar	-do-	Road Metal / Sankhari South BSQ (Cha)	Khata No.849, Plot No. 3502(P)	3.5	Soubhagya Chandra Das	Bypass road, Talcher, Anugul							20	6	108.4	85	33	14.98	139335
53	Khordha (SJTA)	Kaipadar	-do-	Road Metal/ Sankhari east-West (Ga)	Khata No.849, Plot No. 3502(P)	9.84	Mr Ram Nivas Yadav, Director, M/s Premier Rock Product Pvt Ltd	Dankari, Mahisara, Jajpur							20	6	193.6	85	33	15.63	300122
54	Khordha (SJTA)	Kaipadar	-do-	Road Metal/ Sankhari East-West (Gha)	Khata No.849, Plot No. 3502(P)	10.879	Mr Ram Nivas Yadav, Director, M/s Premier Rock Product Pvt Ltd	Dankari, Mahisara, Jajpur							20	6	193.6	85	33	24.34	494386
55	Khordha (SJTA)	Kaipadar	-do-	Road Metal/ Sankhari East-West (kha)	Khata No.849, Plot No. 3502(P)	8.449	M/s Fortune Associates Pvt Ltd,	Flat No B-202, 2nd floor, Sriniketan Apartment, Badbil, Odisha							20	6	202.4	85	33	3.65	688454
56	Khordha (SJTA)	Kaipadar	-do-	Road Meal/ Sankhari East-West (Ka)	Khata No.849, Plot No. 3105(P)	11.9	Rajendra Prasad Singh	New Routpatana, Buxi Bazar, Cuttack							20	6	277.6	85	33	17.75	411012
57	Khordha (SJTA)	Kaipadar	-do-	Road Metal / Sankhari South NBSQ	Khata No.849, Plot No. 3502(P)	1									20	6	11.2	85	33	14.3	35000

58	Khordha (SJTA)	Kaipadar	-do-	Road Metal/ Sankhari South NBSQ (Ka)	Khata No.849, Plot No. 3502(P)	5									20	6	15.9	85	33	8.6	20000
59	Khordha (SJTA)	Kaipadar	-do-	Road Metal / Kaipadar New Building Stone quarry	Khata No.849, Plot No. 2825(P)	10	Debdra Nath Jena	S/ Dwijendra Lal Jena, Uparsahi, Khordha							20	6	43.91	85	33	41.85	443955
60	Khordha (SJTA)	Malipada	-do-	Road Metal/ Hanumantia (GA) building stone quarry	Khata no.- 726/2, plot no. 9(P)	1.087	Sarat Chandra Kahalsingh	At/Po-Kumarbasata, Khordha							20	5	59.11	85	32	34.8	30008
61	Khordha (SJTA)	Kiajhari	-do-	Road Metal / Kiajhari White Stone Quarry	Khata No. 320, Plot No. 755(P)	1									20	5	18.3	85	34	42.6	28000
62	Khordha (SJTA)	Deuli	New	Road Metal	Khata No. 319, Plot No. 953	12.025									20	5	35.4	85	29	43.2	500000
63	Khordha	Brahmapura	New	Blackstone	Khata No. 329, Plot No. 2	5.415									20	09	44.2	85	37	24.18	1,70,000
64	Beguni (SJTA)	Dangarapada	To be auctioned	Road Metal / Kalachua BUILDING STONE QUARRY	Khata No.17, Plot No. 1246(P), 1237(P)	7.7									20	5	59.7	85	30	42.1	200000
65	Beguni (SJTA)	Dangarapada	-do-	Road Metal / Dangarapada New Building Stone Quarry	Khata No.17, Plot No. 1246(P)	2.5									20	5	59.5	85	30	42.2	80000

66	Beguni a (SJTA)	Dangarapada	Auction ed during 18-19 but EC wanting	Road Metal/ Kalachua New Building stone (Cha)	Khata No.17, Plot No. 1237(P)	3.624	Kailash Ch Parija, MD, Kukumina Constr n Pvt Ltd	Plot 364, Bomikhal, BBSR											2 0	6	1. 2 3	8 5	3 0	3 6. 4 9	100107
67	Beguni a (SJTA)	Dangarapada	-do-	Road Metal / Dangarapada White Building Stone quarry	Khata No.17, Plot No. 1517(P)	2	Kailash Ch Parija, MD, Kukumina Constr n Pvt Ltd	Plot 364, Bomikhal, BBSR											2 0	5	5 2. 6 8	8 5	3 0	5 1. 5 5	59080
68	Beguni a (SJTA)	Dangarapada	-do-	Road Metal / Kalachua NBSQ (Jha)	Khata No.17, Plot No. 1517(P)	9.5	Manoj Ku sahoo, M/s Dio Infrate ch P Ltd	Plot 43, Unit VII, Suryanagar, BBSR											2 0	5	5 0. 4 2	8 5	3 0	4 4. 7 2	479500
69	Beguni a (SJTA)	Dangarapada	-do-	Road Metal / Kalachua New (Chha)	Khata No.17, Plot No. 1247	6	Kailash Ch Parija, MD, Kukumina Constr n Pvt Ltd	Plot 364, Bomikhal, BBSR											2 0	5	5 6. 0 2	8 5	3 0	4 3. 4 4	265243
70	Beguni a (SJTA)	Dangarapada	-do-	Road Metal / Dangarapada New Building Stone North side	Khata No.17, Plot No. 1237(P)	5	Pragya n Paramita Padhi	Plot 3840, Barimunda, Mancheswar, BBSR											2 0	6	1. 6	8 5	3 0	4 0. 1	151952
71	Beguni a (SJTA)	Dangarapada	-do-	Road Metal / Kalachua NBSQ (nian)	Khata No.17, Plot No. 1517(P)	6.682	Kailash Ch Parija, MD, Kukumina Constr n Pvt Ltd	Plot 364, Bomikhal, BBSR											2 0	5	4 5. 5 2	8 5	3 0	4 4. 7 2	300122

72	Begunia (SJTA)	Dangarapada	-do-	Road Metal / Kalachua NBSQ (Ta)	Khata No.17, Plot No. 1517(P)	6.772	Dilip Kujena, Urmila Builders P Ltd	Plot 2508, Lewis Road, BBSr					10	5	46.52	85	30	48.58	264736
73	Begunia (SJTA)	Dangarapada	-do-	Road Metal / Kalachua NBSQ (Tha)	Khata No.17, Plot No. 1517(P)	4.894	Kailash Ch Parija, MD, Kukumi na Constr n Pvt Ltd	Plot 364, Bomikhal, BBSR					20	5	47.25	85	30	53.44	204177
74	Begunia (SJTA)	Dangarapada	-do-	Road Metal / Kalachua NBSQ (Ja)	Khata No.17, Plot No. 1517(P)	5.228	Kailash Ch Parija, MD, Kukumi na Constr n Pvt Ltd	Plot 364, Bomikhal, BBSR					20	5	51.01	85	30	36.55	158246
75	Tangi	Jariput	New	Black stone (Jariput BS -A)	Khata no-296, Plot No.1112	3							19	51	23.43	85	18	38.19	4522
76	Tangi	Jariput	New	Black stone Jariput BS-B	Khata no-296, Plot No.1112	3							19	51	25.15	85	18	35.81	29133
77	Tangi	Jariput	New	Black stone Jariput BS-C	Khata no-296, Plot No.1112	3							19	51	26.73	85	18	38.79	5506
78	Tangi	Jariput	Running	Black stone Jariput BS-6	Khata no-296, Plot No.1061	2.5	Saroj Kumar Mohanty	At-Nachuni Dist-Khordha	06.09.2018	No.41 Dtd-8.3.2018			19	51	29.54	85	18	44.68	65961
79	Tangi	Jariput	New	Black stone Jariput BS-D	Khata no-296, Plot No. 1112(P) 1061(p)	3							19	51	20.16	85	18	34.37	14256
80	Tangi	Jariput	Running	Black stone Jariput BS -9	Khata no-296, Plot No.1112	0.45	Tarani Baalabanta ray	At-Chilika Dist khordha	01.07.2019	No.41 Dtd-8.3.2018			19	51	23.6	85	18	40.1	11544
81	Tangi	Jariput	LOI	Black stone Jariput BS -10	Khata no-296, Plot No.1112	0.315					Pranaya Ranasingh	At-Kaithapalla Dist-Khordha	19	51	23.6	85	18	40.1	3430

82	Tangi	Jayamangalpur	Running	Black stone	Khata no-432, Plot No.1632	2.2	Sandip Bhasin	At-Chilika Dist Khordha	04.08.2020	583 Dated 30.04.2016.			19	51	3386	85	18	3354	20216
				Jayamangalpur BS Q No.1															
83	Tangi	Jayamangalpur	Running	Black stone	Khata no-432, Plot No.1632	1.3	Sangram Keshori Sen	At-Kaithapalla, pO-Biribadi, Dist-Khordha	29.08.2018	16.03.2018			19	51	3196	85	18	3294	28270
				Jayamangalpur BS Q No.2															
84	Tangi	Jayamangalpur	New	Jayamangalpur BS Q No.3	Khata no-432, Plot No.1632	2.2							19	51	3196	85	18	3294	24990
85	Tangi	Balarampur	Running	Balarampur Chips Metal Quarry	Khata No.272 Plot No.46	2.162							20	0	573	85	30	91	84084
86	Tangi	Brusabandha	LOI issued	Black stone	Khata no-212, Plot No.558	1.232					Satyapriya Srichandan	Dist - Khordha	19	52	39	85	19	537	4986
				Brusabandha BS Q No.1															
87	Tangi	Brusabandha	LOI issued	Black stone	Khata no-214, Plot No.554	2					Subhabrata Mohanty	At-Kaligali Cuttack	19	52	4431	85	19	5051	50041
				Brusabandha BS Q No.2															
88	Tangi	Brusabandha	LOI issued	Black stone	Khata no-214, Plot No.554	4.5					Satyapriya Srichandan	Dist - Khordha	19	52	40	85	19	50	18210
				Brusabandha BS Q No.3															
89	Tangi	Brusabandha	Running	Black stone	Khata no-214, Plot No.554	5.6					Subhabrata Mohanty	At-Kaligali Cuttack	19	52	3355	85	19	421	60489
				Brusabandha BS Q No.4															
90	Tangi	Brusabandha	LOI issued	Black stone	Khata no-214, Plot No.554	3					Subhabrata Mohanty	At-Kaligali Cuttack	19	52	3623	85	19	441	57096
				Brusabandha BS Q No.5															
91	Tangi	Brusabandha	LOI issued	Black stone	Khata no-214, Plot No.554	2					Subhabrata Mohanty	At-Kaligali Cuttack	19	52	3067	85	19	4265	25385
				Brusabandha BS															

				Q No.6														
92	Tangi	Brusabandha	LOI issued	Black stone Brusabandha BS Q No.7	Khata no-214, Plot No.554	3.5				Subhabrata Mohanty	At-Kaligali Cuttack	19	52	2816	85	19	4162	326817
93	Tangi	Nayakote	Running	Nayakote Black Stone	Khata no.293, plot no.685	2.46	Satya Multiplex	At-Nayapalli, Dist Khordha	20.03.2020	7805 Dated 03.02.2020		20	5	0.5	85	30	565	75091
94	Tangi	Kunjari	New	Kunjari Black Stone	Khata no.160, lot no.474	2.56						19	53	361	85	17	593	49083
95	Tangi	Damanabhai	New	Damanabhai Black Stone Quarry-1	Khata no.206, lot no.887	9.15						20	3	4488	85	31	5424	193861.5
96	Tangi	Damanabhai	New	Damanabhai Black Stone Quarry-2	Khata no.149, lot no.878	0.603						20	3	47161	85	31	56747	7020
97	Tangi	Jariput	New	Jariput Black Stone - 11	Khata no.296, lot no.689	12						19	51	53358	85	18	18004	3807745
98	Tangi	Botanda	New	Botanda Black Stone	Khata no.168, lot no.422	2.578						20	0	51941	85	30	7687	66021
99	Banapur	Suliapali	New	Stone Quarry	Khata no 165 Plot No 425	14.55						19	49	4119	85	10	5968	102207
100	Banapur	Kolathadihi	New	Stone Quarry 17.070 Hect.	Khata no 151 Plot No 421	42.18						19	49	19333	85	10	4536	6883755
101	Banapur	Narendrapur	New	Stone Quarry	Khata no339 Plot No 131	13.18						19	49	806	85	10	3964	322283
102	Banapur	Narendrapur	New	Stone Quarry	Khata no339 Plot No 201	82.208						19	48	5908	85	10	5165	9850323

103	Banapur	Torasingh	New	Stone Quarry	Khata no232 Plot No 649/752	18							19	49	962	85	11	2975	745070
104	Banapur	Nilakanthapur	New	Stone Quarry	Khata no68 Plot No 79	9.04							19	50	1443	85	15	27	82726
105	Begunia	Parichal	Running	ROAD METAL	Khata No- 373, plot No 724	5.62	M/s Agrawal Infrabuild P Ltd	1st Floor, VR Plaza, Link road, Bilaspur, CG					20	5	412	85	30	548	491822
106	Begunia	Parichal	LOI	ROAD METAL	Khata No- 373, plot No 725	4.87				M/s Agrawal Infrabuild P Ltd	1st Floor, VR Plaza, Link road, Bilaspur, CG		20	5	4137	85	30	5699	137654
107	Begunia	Parichal	LOI	ROAD METAL	Khata No- 373, plot No 726	5.62				M/s Agrawal Infrabuild P Ltd	1st Floor, VR Plaza, Link road, Bilaspur, CG		20	5	3797	85	30	5687	219166
108	Begunia	Parichal	LOI	ROAD METALH a	Khata No- 373, plot No 727	5.87				M/s Agrawal Infrabuild P Ltd	1st Floor, VR Plaza, Link road, Bilaspur, CG		20	5	3451	85	30	5675	142390
109	Begunia	Parichal	LOI	ROAD METALH a	Khata No- 373, plot No 728	5				M/s Agrawal Infrabuild P Ltd	1st Floor, VR Plaza, Link road, Bilaspur, CG		20	5	383	85	30	562	411169
110	Begunia	Parichal	New	ROAD METAL	Khata No- 373, plot No 608	4.48							20	5	341	85	31	19	90000
111	Begunia	Parichal	New	ROAD METAL	Khata No- 373, plot No 702	0.48							20	5	353	85	31	45	16000
112	Begunia	Parichal	New	ROAD METAL	Khata No- 372, plot No	0.5							20	5	126	85	30	509	16000

					1309																
113	Beguni a	Parich hal	New	ROAD METAL	Khata No- 373, plot No 1858, 606 & 607	8									2 0	6	2 9. 3	8 5	3 1	2 6. 6	280000
114	Beguni a	Parich hal	New	ROAD METAL	Khata No- 373, plot No 1512, 1514 & 1520	2.165									2 0	5	1. 1	8 5	3 0	5 8. 2	70000
115	Bolagar h	Panch ukota	LOI	Panchu kota Boulder Quarry A	Khata No- 231 Plot No- 622 Kissam- Mundia	1.21						Ramah ari Subud hi	At/Po- Bolagar h Dist Khordha	2 0	9	2 9. 1 2	8 5	1 4	3 9. 9 7	3528	
116	Bolagar h	Sampu r	LOI	Sampur Boulder Quarry A	Khata No- 400 Plot No- 141 Kissam- Pahada	0.4						Gopab andhu Deo Mohap atra	At- Sampur Dist - Khordha	2 0	1 2	1 1. 3	8 5	1 5	3 9. 9 4	1581	
117	Bolagar h	Gobar dhanp ur	New	Gobard hanpur Boulder Quarry	Khata No- 365 Plot No- 6 Kissam- Chhota Pahada	2.5									8 5	1 3	0. 2 2	2 0	1 2	5 9. 1 6	25000
118	Bolagar h	Bolaga rh	Running	Bolagar h Boulder Quarry (Sairat case No- 1/15-16)	Khata No-1279 Plot No- 2381	0.809	Sri Subhe ndu kumar Cham pati S/o- Raghu natha Cham pati	Vill/Po/P s- Bolagarh mob- 9238984 599 Dist- Khordha	28.06.1 6	SEIAA / 737 dated 30.01.1 6					2 0	9	5 1. 4	8 5	1 6	2 7. 5	238
119	Bolagar h	Kusupa lla	Running	Kusupall a Boulder Quarry (Sairat case	Khata No-495 Plot No- 683	3	Sri Rabind ra Kumar Parida	vill- Trutiapa da Po/Ps- Bolagarh	23.07.1 8	SEIAA / 6362 dated 17.08.1					2 0	8	5 6	8 5	1 4	3 2	468

				No-13/15-16)				Dist-Khordha		5									
120	Bolagarh	Gopalipada	Running	Gopalipada Boulder Quarry (Sairat case No-6/15-16)	Khata No-217 Plot No-883	0.4	Sri Jayakrushna Swain, S/o-Hrusikesh Swain	vill-Chuda, po-Dabardhua, Ps-Bolagarh, Khordha	20.07.16	SEIAA / 605 dated 30.01.16			20	9	21.1	85	17	27.3	405
121	Bolagarh	Panchukota	Running	Panchukota Boulder Quarry (Sairat case No-4/15-16)	Khata No-231 Plot No-734	0.603	Sri Rabindra Kumar Parida	vill-Trutiapada Po/Ps-Bolagarh Dist-Khordha	20.07.16	SEIAA / 719 dated 30.01.16			20	9	10.13	85	15	16.3	60
122	Bolagarh	Srichandanpur	Running	Srichandanpur Boulder Quarry (Sairat case No-10/15-16)	Khata No-562 Plot No-1	4.625	Sri Satrugna Mansingh, S/o-Arakhita Mansingh	Vill-Siula Po-Pichukuli, Ps-Begunia, Khordha	23.06.17	SEIAA /4360 dated 17.08.15			20	11	48.4	85	18	22.9	540.8
123	Bolagarh	Dauniapalli	Running	Dauniapalli Boulder Quarry (Sairat case No-12/15-16)	Khata No-326 Plot No-809	0.25	Prasant Kumar Parida, S/o-Sadhu Charan Parida	At-Trutiapada, po/ps-Bolagarh, Khordha	21.03.16	SEIAA /4360 dated 17.08.15			20	9	11	85	14	31	1088
124	Bolagarh	Dabardhua	New	Dabardhua Boulder Quarry	Khata No-532 Plot No-43	1							20	9	43.3	85	16	57.2	10000
125	Bolagarh	Gobardhanpur	New	Gobardhanpur Boulder	Khata No-365 Plot No-	1							20	12	58.7	85	13	19.4	10000

				Quarry	96												4			2	
TOTAL																				5,46,06,413. 8	