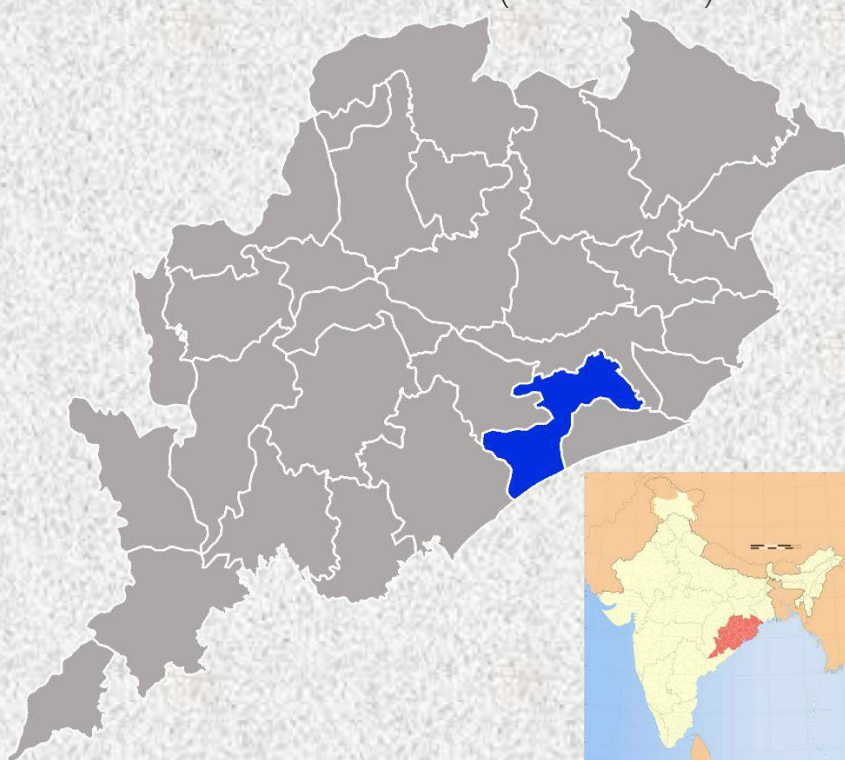




DISTRICT SURVEY REPORT (DSR) OF KHORDHA DISTRICT, ODISHA FOR LATERITE STONE QUARRY MINING

As per Notification No. S.O. 141(E), 15th January, 2016 & S.O. 3611(E), 25th July, 2018, New Delhi, MINISTRY OF ENVIRONMENT, FOREST & CLIMATE CHANGE (MoEF & CC)



**COLLECTORATE KHORDHA
OCTOBER-2024**

CONTENTS		
Point No.	DESCRIPTION	Page No.
	PREFACE	01
01	INTRODUCTION.	02-03
02	OVERVIEW OF MINING ACTIVITY IN THE DISTRICT.	04-05
03	GENERAL PROFILE OF THE DISTRICT.	06-12
04	GEOLOGY OF THE DISTRICT.	13-15
05	DRAINAGE OF IRRIGATION PATTERN.	15-16
06	LAND UTILIZATION PATTERN IN THE DISTRICT: FOREST, AGRICULTURAL, HORTICULTURAL, MINING ETC.	17-19
07	SURFACE WATER AND GROUND WATER SCENARIO OF THE DISTRICT.	20-21
08	RAINFALL OF THE DISTRICT AND CLIMATIC CONDITION.	22
09	DETAILS OF THE MINING LEASES IN THE DISTRICT AS PER THE FORMAT.	23-45
10	DETAILS OF ROYALTY OR REVENUE RECEIVED IN LAST THREE YEARS.	46-47
11	DETAILS OF PRODUCTION OF MINOR MINERAL IN LAST THREE YEARS.	48-49
12	MINERAL MAP OF THE DISTRICT.	50
13	LIST OF LETTER OF INTENT (LOI) HOLDERS IN THE DISTRICT ALONG WITH ITS VALIDITY AS PER THE FOLLOWING FORMAT.	51
14	TOTAL MINERAL RESERVE AVAILABLE IN THE DISTRICT.	52-65
15	QUALITY /GRADE OF MINERAL AVAILABLE IN THE DISTRICT.	65
16	USE OF MINERAL.	65
17	DEMAND AND SUPPLY OF THE MINERAL IN THE LAST THREE YEARS.	66
18	MINING LEASES MARKED ON THE MAP OF THE DISTRICT.	67-68
19	DETAILS OF THE AREA OF WHERE THERE IS A CLUSTER OF MINING LEASES VIZ. NUMBER OF MINING LEASES, LOCATION (LATITUDE AND LONGITUDE).	69-72
20	DETAILS OF ECO-SENSITIVE AREA, IF ANY, IN THE DISTRICT.	72-73
21	IMPACT ON THE ENVIRONMENT (AIR, WATER, NOISE, SOIL, FLORA & FAUNA, LAND USE, AGRICULTURE, FOREST ETC.) DUE TO MINING ACTIVITY.	73-74
22	REMEDIAL MEASURES TO MITIGATE THE IMPACT OF MINING ON THE ENVIRONMENT.	75-77

23	RECLAMATION OF MINED OUT AREA (BEST PRACTICE ALREADY IMPLEMENTED IN THE DISTRICT, REQUIREMENT AS PER RULES AND REGULATION, PROPOSED RECLAMATION PLAN).	77
24	RISK ASSESSMENT & DISASTER MANAGEMENT PLAN.	78
25	DETAILS OF THE OCCUPATIONAL HEALTH ISSUES IN THE DISTRICT. (LAST FIVE-YEAR DATA OF NUMBER OF PATIENTS OF SILICOSIS & TUBERCULOSIS IS ALSO NEEDS TO BE SUBMITTED.	79-80
26	PLANTATION AND GREEN BELT DEVELOPMENT IN RESPECT OF LEASES ALREADY GRANTED IN THE DISTRICT.	80
27	ANY OTHER INFORMATION.	80

LIST OF TABLES

SL NO.	DESCRIPTION	PAGE NO.
01	Stratigraphy	15
02	Drainage system with description of main rivers	15
03	Category of forest areas in khordha forest division	17
04	Category of forest areas in chandaka wildlife division, bhubaneswar	17
05	Category of forest areas in city forest division	18
06	Category of forest areas in chilika wildlife division	18
07	Blockwise land utilization pattern in khordha district	19
08	Year-Month wise rainfall report	22
09	Details of the mining leases in the district as per format	23-45
10	Details of royalty or revenue received in last three years	46-47
11	Details of production of minor mineral in last three years.	48-49
12	List of letter of intent (loi) holders in the district along with its validity as per the following format	51
13	Total mineral reserve available in the district	52-65
14	Demand and supply of the mineral in the last three years.	66
15	Details of the area of where there is a cluster of mining	69-72
16	Tuberculosis data rntcp	79

LIST OF MAPS

SI No.	DESCRIPTION	Page No.
01	Index Map of the District	08-12
02	Map showing River & Drainage pattern	16
03	Surface water body map of district	20
04	Ground water prospect map of district	21
05	Mineral Map of District	50
06	Mining Leases marked on the Map of the District	67-68
07	Health facility map of district	80

PREFACE

The Erstwhile Ministry of Environment and Forests(MoEF), (the Government of India, made Environmental Clearance (EC) for mining of minerals mandatory through its Notification of 27th January, 1994 under the provisions of Environment Protection Act, 1986. Keeping in view the experience gained in environmental clearance process over a period of one decade, the Ministry came out with Environmental Impact Notification, SO 1533 (E), dated 14th September 2006. The Ministry of Environment, Forests & Climate Change (MoEF&CC), Government of India had amended the said vide notification S.O. 141(E) Dated 15th January, 2016. Now again Ministry of Environment, Forests & Climate Change (MoEF & CC), Government of India amended the notification S.O. 141(E) Dated 15th January, 2016 vide S.O. 3611(E) Dated 25thJuly,2018. It has been made mandatory to obtain environmental clearance for different kinds of development projects as listed in Appendix-X of the Notification. In compliance to the notification issued by the Ministry of Environment and Forest and Climate Change Notification no. S.O.3611 (E) NEW DELHI dated 25-07-2018 the preparation of district survey report of laterite stone mining has been prepared in accordance with Clause II of Appendix X of the notification. Every effort has been made to cover laterite stone mining locations, future potential areas and overview of laterite mining activities in the district with all its relevant features pertaining to geology and mineral wealth. This report will act as a compendium of available mineral resources, geological set up, environmental and ecological set up of the district and based on data of various departments like Revenue, Water Resources, Forest, Geology and Mining in the district as well as statistical data uploaded by various state Government departments for preparation for district survey report. The main purpose of preparation of District Survey Report is to identify the mineral resources and developing the mining activities along with other relevant data of the District.

OBJECTIVES

The main objective of the preparation of District Survey Report is to ensure the following

- Identification of mineral wealth in the district.
- Identification of areas of Minor Mineral having the potential mineral where mining can be allowed.
- Identification of areas of proximity to infrastructural structures and installations where mining should be prohibited.

01. INTRODUCTION.

Khordha is one of the new districts carved out of the former Puri District on 1st April, 1993. The other new district carved out of Puri was Nayagarh. In the year 2000, the district's name was changed from Khordha to Khordha. The district headquarters is located in Khordha Town, formerly known as Jajarsingh or Kurada, (kurada means foul mouthed). The old milestones of the area had the word KURADA which have now been white washed and the word "Khordha" is written on them. About the origin of the word Khordha (as earlier called) it is also told that the word is derived from two Odia words- "Khura" and "Dhara", meaning razor and edge, probably because the soldiers of Khordha were as sharp and dreadful as the edge of a razor. Neither of the two origins, however, can be called authentic. The history of Khordha depicts that in early days the area was densely populated by the Savaras, a tribal community who are still found in some pockets of the district. Over the period, however, its history is found closely associated with the history of Puri district. About the middle of the 10th century A.D. the rule of Bhoumakars was supplanted by that of the Somavamsis. Yayati-2, Mahasiva Gupta was the first Somavamsi king to occupy eastern Odisha. He and his son Udyot Mahabhava Gupta were great temple builders and the Lingaraj temple at Bhubaneswar has been attributed to them. The last king of this dynasty was Karnadeva, who was defeated and killed by Chodaganga Deva about 1110 A.D. Khordha ascended to eminence and glory at the time of the first King of Khordha dynasty Ramachandra Deva who selected Khordha as the capital of his kingdom in the later part of 16th Century. The reason was its strategic location as Khordha was guarded by Barunei Hill on one side and dense forest on the other. Despite repeated onslaughts from Maratha and Muslim cavalry, it managed to maintain the glory of its independence of royal fort till 1803. Therefore, the Royal Fort is spelt with reverence as "Khordhagada" and is referred as the "last independent fort" which remained free from the clutches of East India Company for a long period (from 1757, the Battle of Plassey after which the East India Company established company rule in Bengal till 1803).

However, Khordha came fully under occupation of East India Company in 1827. The delay was a consequence of the strong revolts of the Paikas of Khordha that greatly affected the Company administration in this region. History witnessed the brawn and bravery of the Paikas of Khordha during the Paika Rebellion of 1817-18 under the command of Bakshi Jagabandhu.

This resistance movement of Odias was recorded by the British historians as "Paik Rebellion", which was in fact, the first Independence war of India. It originated in Khordha soil and spread to other parts of Orissa in 1817 much prior to the outbreak of the historical Sepoy Mutiny of 1857. Mr. Walter Ewer recorded his views in his report of 1818, excerpt of which reads as: "Now there is no need of assistance of Paiks at Khordha. It is dangerous to keep them in British armed forces. Thus they should be treated and dealt as common Ryots and land revenue and other taxes should be collected from them. They must be deprived of their former Jagir lands (rent free lands given to the Paiks for their military service to the state)" Within a short period of time the fame of Paiks was forgotten. But even now where the Paiks are living as a group they have retained their previous aggressive nature. The British armed force advanced from Madras on 8th September 1803 and arrived at Puri on 16th September enroute Manikapatna. With the help of Fate Mohemmed of Malud

(recruited by the Marathas as watchman) Colonel Harcourt reached Narasinghpatna after two days crossing the Chilika lake. The Britishers did not face any resistance while occupying Narasinghpatna and Puri. After occupying Jagannath temple of Puri, Colonel Harcourt proceeded to Cuttack crushing the feeble resistance of Marathas near Atharnala and Jagannath Sadak. The vanquished Maratha soldiers fled for life to Khordha jungle. Colonel Harcourt arrived at Cuttack enroute Barangagada crossing the river Kathajodi.

Under the able command of Captain Morgan a detachment of British troop arrived at Jampada of Balasore sea shore by ship and occupied the Maratha fort. Another detachment of British troop reached at Balasore enroute Medinipur (now Midnapore) under the command of Colonel Forgusson and joined the previous troop stationed at Balasore. The joint troops proceeded from Balasore to Cuttack and joined the soldiers of Colonel Harcourt and occupied the Barabati fort. In this way Odisha fell to the East India Company in the year 1803. Thus the Company became the ruler of most parts of India except the territory of Khordha.

In 1804 AD the English soldiers seized the fort of Khordha for three weeks and razed it to the ground by canon firing. They proclaimed Raja Mukund Dev-II as rebel, dethroned him and made him a prisoner of war. Raja Mukunda Dev-II submitted an appeal to the British authority stating that as per the instruction of Jayee Rajguru he had fought with them and he was in no way responsible for the battle. Considering the appeal the Britishers pardoned him and offered him the responsibility of managing the temple of Jagannath. He was also ordered to remain at Puri. Jayee Rajguru being the kingpin of Khordha Rebellion of 1804 was sentenced to death and was hanged on a banyan tree at Baghitota of Medinipur. The gruesome murder of Jayee Rajguru by the Company authority caused much discontentment among the Paiks of Khordha who thereafter under Bakshi Jagabandhu Bidyadhar rebelled against the Company. Khordha was ultimately annexed to British territory in 1827, after the rebellion was fully crushed.

Khorda is an important centre of handloom industry. The lungi, Gamchha & Sarees produced here and popular outside Odisha for its quality. There are a few Hindu mathas in Gada Khordha i.e. the old fort area of the town. The civic affairs of the town are managed by Khordha Municipality. The erstwhile Puri district was divided to form three new districts in April 1993 and as a result Khordha district was formed taking Khordha & Bhubaneswar sub-divisions of Puri district.

Khordha district is located in the south-eastern part of Odisha, adjoining the coastal area. It occupies an area of about 2887.5 sq km. The district is bounded by latitudes 19° 40' to 20° 25' and longitudes is 84° 56' to 86° 05' and occupies parts of degree sheets 73 H, L, P & 74 I, A, E. It is surrounded by Cuttack district to the north, Ganjam and part of Puri district to the south, Puri district to the east and Nayagarh district to the west. Bhubaneswar – Vizayanagaram segment of the East-coast railway runs through the district along NE –SW direction. National Highway No. 16 running almost sub-parallel to the East coast railway line, passes through Khordha, the district headquarters and Bhubaneswar the state capital Khordha is about 30 km from Bhubaneswar and 12 km from Jatani, the nearest railway station of East coast railway. It has an average elevation of 75 m (246ft).

02. OVERVIEW OF MINING ACTIVITY IN THE DISTRICT.

Khordha district is indeed rich in minor minerals, which plays a vital role in supporting infrastructure development. The availability of minor minerals like stone, laterite, moorum, ordinary earth and sand sources contribute significantly to the local economy and construction industry. The artisan grade of khondalite does indeed occur in various parts of Khordha district. This mineral is known for its quality and is utilized in different applications, including construction and decorative purposes. The geology of Khordha provides a diverse range of materials that meet the demands of both residential and commercial construction.

The implementation of the i4ms system for minor minerals has brought about a more systematic approach to monitoring and managing these resources. Utilizing Drone surveys can improve operational efficiency by offering precise mapping and resource assessments, which aid in planning and management. The effective management and monitoring of these resources, along with the integration of technology, can significantly enhance sustainable development in the region, benefiting both the economy and the community.

Mineral Resources Overview:

- Laterite: Laterite occurs as capping and develops by intensive weathering of underlying parent rock. These are porous, vesicular, concretionary often forms a hard crust, and can reach thicknesses of up to 10 meters or more.
- Road Metal/Stone: Road metals typically consist of durable and hard rock types that are suitable for construction and road building. It constitutes granite gneiss, charnockite, pyroxene granulite, khondalite and its variants which are invariably fractured jointed and associated with hairline cracks and other microstructures.
- Morrum: Association of moorum with laterite is predominantly observed in the district. There are few morrum sources identified and proposed. Mainly these are used in filling up the project sites, laying out railway tracks etc.
- Sand: Daya, Bhargabi, Kuakhai and Kushabhadra rivers, emerging as distributaries from Mahanadi River system, drain southerly through the eastern flank of the district and merge either with the Chilika lake or with the Bay of Bengal. The river system that carried sands into coasted depressions with their tributaries.

- Decorative Stone Lease:

Existing Sources:

1. Narangarh Khondalite

Holder: M/s OMC Ltd.

Lease Area: 4.672 hectares

Commencement Date: 01.12.2020

Lease Period: 30 years

Current Status: Working

2. Tutumberpalli Granite, Lessee Sri Maa Granites

Lease Area: 3.399 hectares

Commencement Date: 08.04.2016

Lease Period: 20 years

Current Status: Mining operations are halted, pending Consent to Operate from the Odisha State Pollution Control Board (OSPCB).

Prospecting License Sources:

3. Source Name: Malipada Khondalite Block, Khordha
Area: 4.641 hectares

4. Source Name: Deuli Khondalite Block, Begunia
Area: 14.152 hectares

5. Source Name: Narangarh Khondalite Block, Khordha
Area: 2.215 hectares

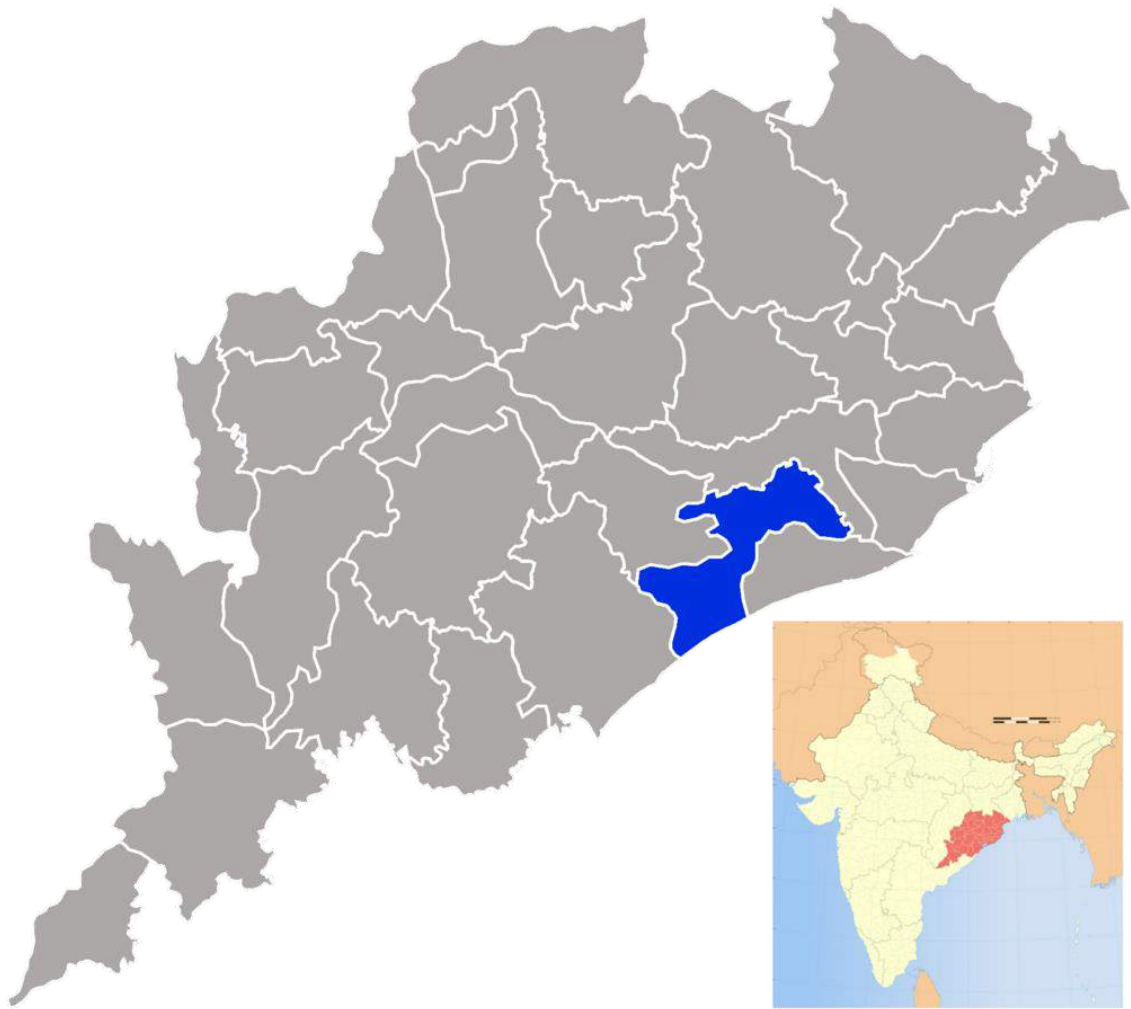
6. Proposal: Routpada & Kurumapada Artisan grade stone (khondalite)

03. GENERAL PROFILE OF THE DISTRICT.

Geographical position	Longitude -84° 55' to 86° 5' Latitude- 19° 40' to 20° 25'
Area & Population	The district has an area of 2813 sq. km and 22.52 lakhs of population as per 2011 census. The district accounts for 1.81 percent of the states territory and shares 5.36 percent of the state's population. The density of population of the district is 800 per sq. Km as against 270 person per sq.km of the state. It has 1534 villages (including 178 un-inhabited villages) covering 10 blocks. 10 Tahasils and 2 sub-divisions. As per 2011 census the schedule caste population is 297472 (13.2%) and schedule tribe population 115051 (5.1 %). The literacy percentage of the district covers 86.9 against 72.9 of the state.
Climate	The climate condition of the district is generally hot with high humidity during April and May and cold during December and January The monsoon generally breaks during the month of July.
Industry & Mining	Khordha is an important centre of handloom industry. The lungi, napkin and saree produced here have an all Odisha market. Besides during the year 2014-15, 2187 nos. of small scale industries have been established with total capital investment of about Rs.10870.89 lakhs with 2176 nos. of Employment generated in the district. The district is also important for mining of minerals like decorative stone (Khondalite), building stone, laterite blocks, morrum & earth.
Power	Consumption of electricity in Khordha district during the year covers 1437.75 million units and revenue villages so far electrified as on 2013-14 is 1343 which constitutes 98.9 % to the total villages of the district.

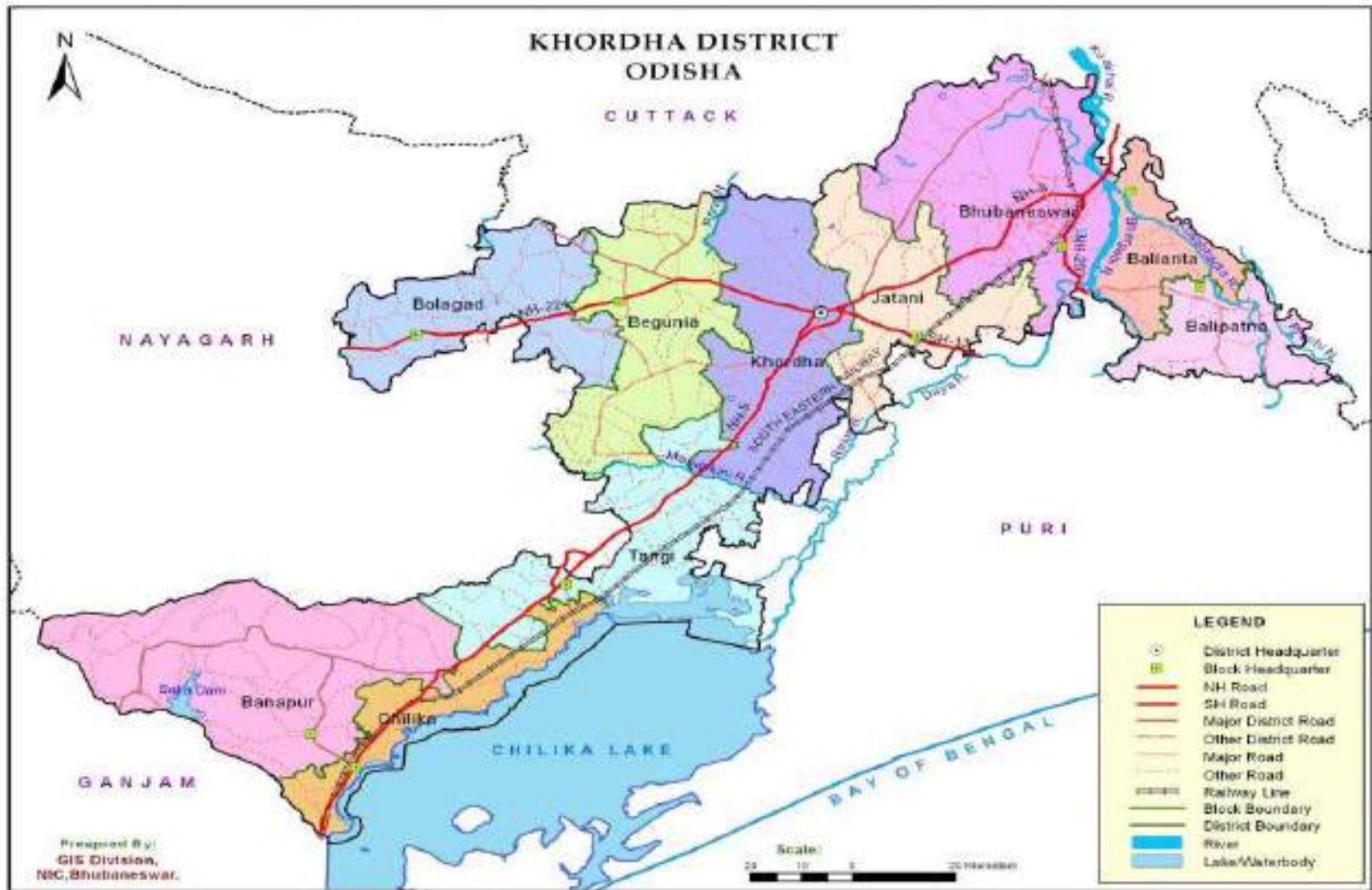
Tourist Places	There are 19 nos. of tourist center such as Bhubaneswar, Dhauli, Khandgiri & Udayagiri, Nadankanan, Atri, Banapur, Barunei, Bhusandapur, Chilika (Barakul), Hirapur, Jayadev Kenduli, Gadamanitri, Rameswar, Madangiri (Mundiapada), Salia Dam-Barbara Hills, Kosalasuni, Thakuranipitha, Balipatna (Sisu Ananta Pitha), Shree Ananta Purusottam Dev (Jagulaipatna) and Sankat Mochan Mahavir Temple identified by department of Tourism and Culture, Odisha.
Transport & Communication	NH- 162.98 km SH- 25.97km Major district Road- 2555.08 km Other district road- 775.74 km Rural road- 1188.89 km Inter village road- 2424.00 km Intra village road- 1471.24 km Besides, 117.39 Kms. of Railway lines with 23 nos. of railway stations and passenger halts are there in the district.
Health	The medical facilities are provided by different agencies like Govt., Private individuals and voluntary organizations in the district. There were 282 nos. of the govt. Allopathic medical institutions with 965 beds facilities, 23 nos. of Homoeopathic dispensaries and 27 nos. of Ayurvedic dispensaries in the district during the year 2013-14.

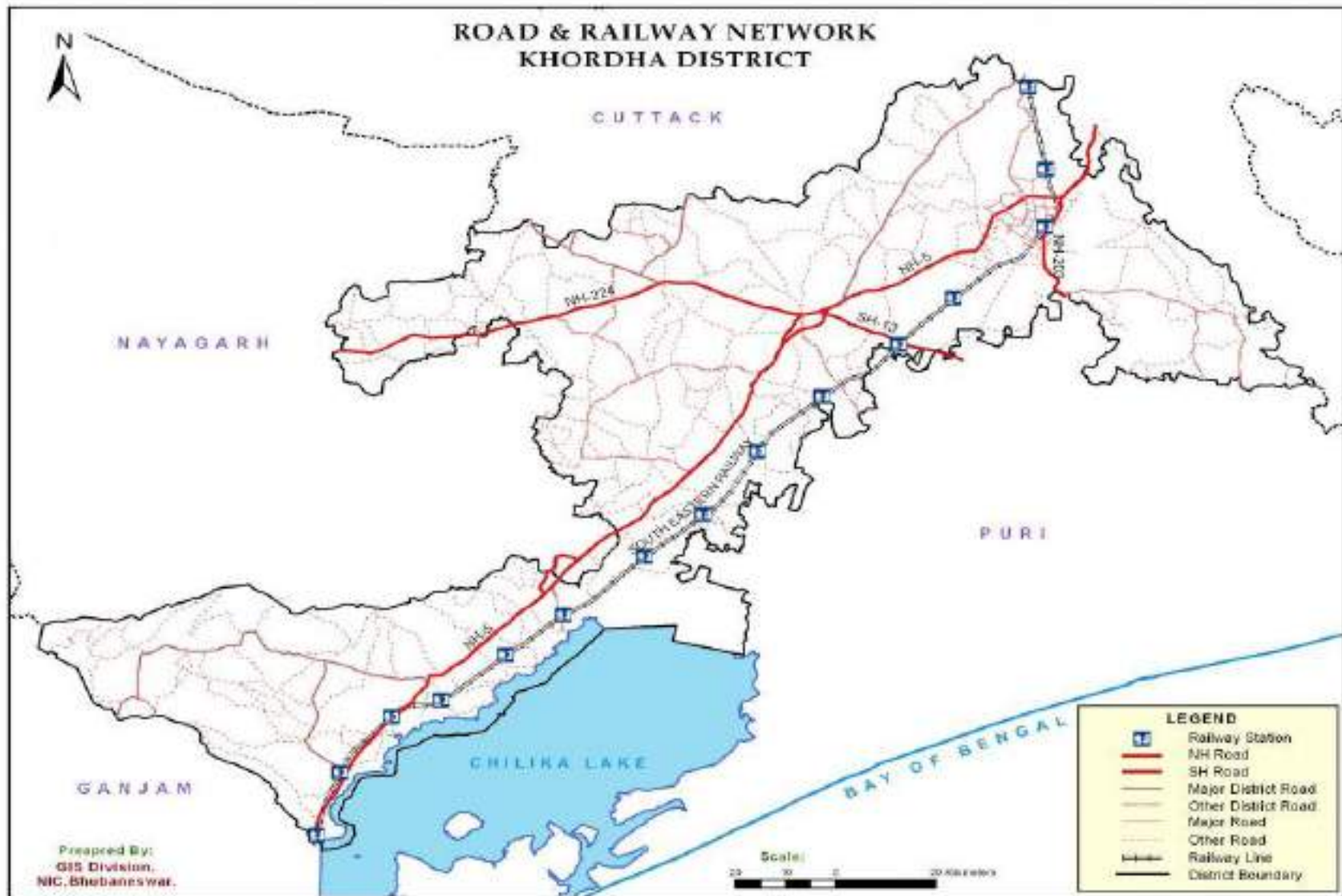
INDEX MAP



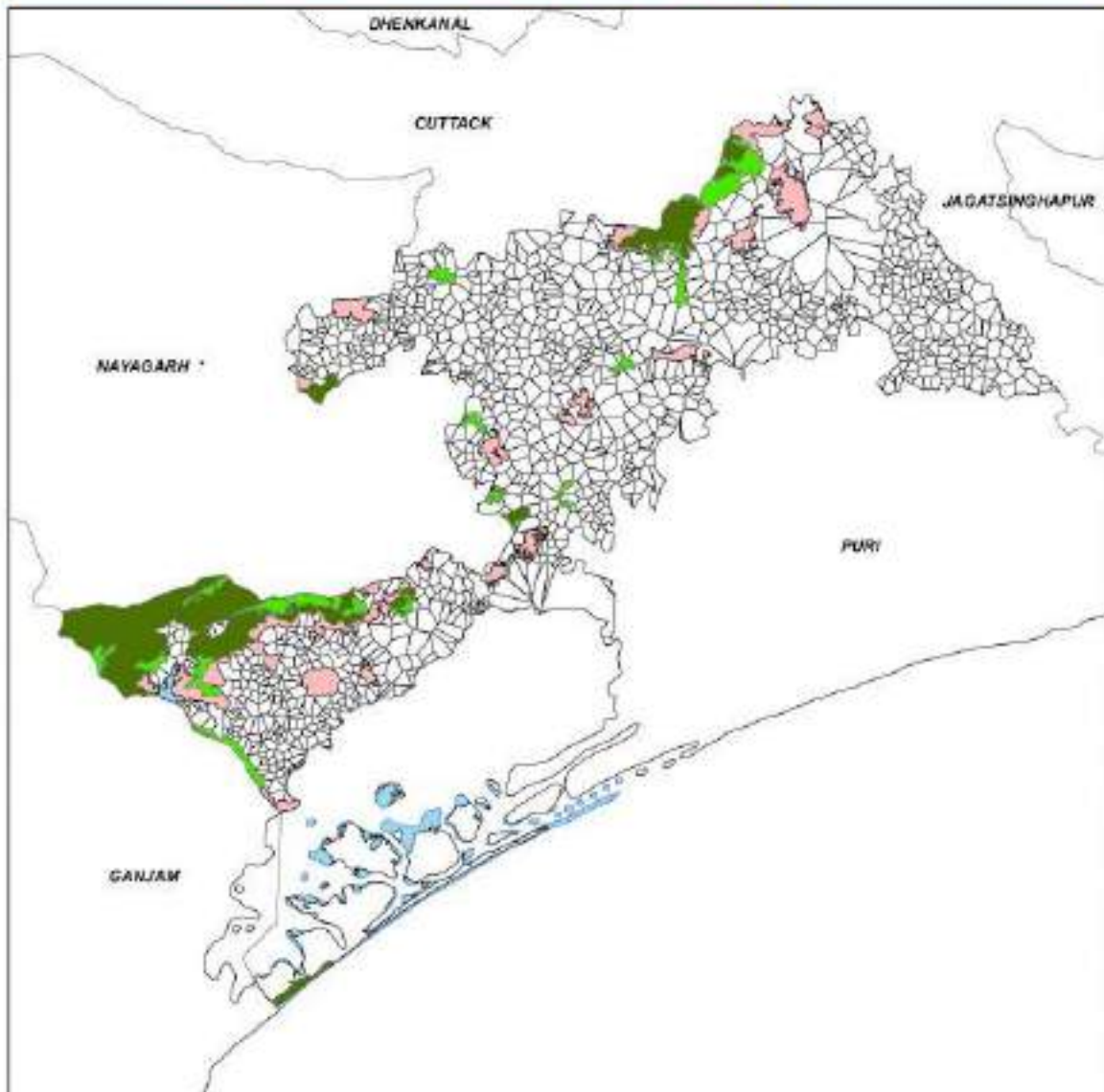
MAP SHOWING THE TAHASILS OF KHORDHA DISTRICT







DISTRICT ATLAS - KHORDHA



04. GEOLOGY OF THE DISTRICT.

The Major geology in the district can be broadly classified into Eastern Ghat Super Group of Archean to Proterozoic age, Proterozoic intrusive, Gondwana Super Group of Mesozoic and Pleistocene to Holocene age of Quaternary period of Cenozoic Era.

The rocks belonging to EGSG are mostly quartzite, khondalite and their variants, charnockite and pyroxene granulite. They are found mostly on the western and south western parts of the district. The Eastern Ghat Super Group of rocks have been intruded by plugs/apophyses of anorthosite, popularly known as Banpur anorthosite/ Chilika lake complex, and are found as cluster of anorthosite bodies around Banpur, Rambha and Balugaon region in the southern & western side of Chilika lake and partly within the lake also. This pluton is emplaced in the core of an antiform (Perraju, 1960). Sarkar et al. (1981) deciphered 3 phases of folding (F1-F3) in the khondalite host rocks and considered emplacement of anorthositic complex syntectonically with F3. Xenoliths of metasediments (khondalite and calc-silicate gneisses) and charnockite in anorthosite and locally developed pyroxene hornfels grade skarn zones indicate the intrusive nature of the complex. The rocks of Eastern Ghat Supergroup show foliation in NE-SW direction. Joint planes, wherever present, follow the same structural alignment. A prominent fault running ENE-WSW is recorded in north-western part of the district. Major lineaments trend in NE-SW direction. The NE-SW trending lineament passing through Baghamari houses a sulphurous hot spring at Atri and is of immense tectonic significance.

Granite gneiss of Archean to Proterozoic age, exposed in the western part of the district, are well foliated and are often garnetiferous. Quartz veins cut across the granulitic country at random.

Western & south-western part of the district is occupied by the hilly terrain of Eastern Ghats. The hilly area in the west gradually passes on to the low undulating rugged terrain towards the central part of the district. In the northern, eastern and south-eastern sides, the district is surrounded by the flood plain and deltaic deposits of Mahanadi river basin. Parts of Chilika lake and its set of

tributaries are the most conspicuous geomorphic features in the south. Daya, Bhargabi, Kuakhai and Kushabhadra rivers, emerging as distributaries from Mahanadi river system, drain southerly through the eastern flank of the district and merge either with the Chilika lake or with the Bay of Bengal. Kaipadar, about 10 km south west of Khordha, marks a water divide with Ran River flowing northerly to Mahanadi and Mandakini river flowing southerly to Chilika. The highest elevation attained in the district is at 568 mts. in its southwestern corner, while Chilika represents the lowest at mean sea level.

The exposures belonging to Athgarh formation of Upper Gondwanas (Lower Cretaceous) mostly occur as a cluster forming upland in the north, NE parts of the district, i.e. west of Bhubaneswar. They are comprising dominantly of sandstones classified as quartz arenite, sub-lithic arenite and lithic wacke (Mishra, 1988; Pal, 1990), characteristically lacking in feldspars in clastic components. This also includes conglomerates, grits, carbonaceous shale, variegated shale and fire clay; most of them as small lenticular bodies breaking the monotonous vastness of sandstones. Deep drilling in the coastal Odisha has indicated the extension of the formation below the alluvial cover of the Mahanadi delta and the coastal Tertiary succession (Pandya et al. 2000).

The earliest Quarternary deposit, the Bolgarh formation (Pleistocene age) occupies central and northern part of the district, overlying the khondalite group of rocks. It comprises hard crust laterite, latosol and also residual soil.

Brahmani formation (Pleistocene to Holocene) consists of residual soil and alluvium and occupies an appreciable part of the district and are particularly conspicuous in the eastern and southern part of the district adjoining Chilika lake.

Bankigarh formation (Middle to Late Holocene) is occupied by north and NE part of the district i.e. east of Bhubaneswar. It mostly comprises brownish silty clay and occur in the flood plain / deltaic plains of Mahanadi River basin.

The district lacks any major mineral deposit of economic significance. Few fire clay deposits located in the north-eastern part of the district are the only deposits of minor minerals that are being mined presently by Tata Refractories Ltd. The other deposits that are being profusely exploited as Dimension and decorative stone for

construction material/polished slabs and artisan grade of khondalite around Tapanga and Kurumpada area.

Ground water occurs in the porous sedimentary formations and in the fractured igneous and metamorphic rocks in unconfined to confined conditions. The nala and gully erosion in the tributaries and distributaries of Mahanadi river basin and in Chilika lake are quite common.

Stratigraphy:

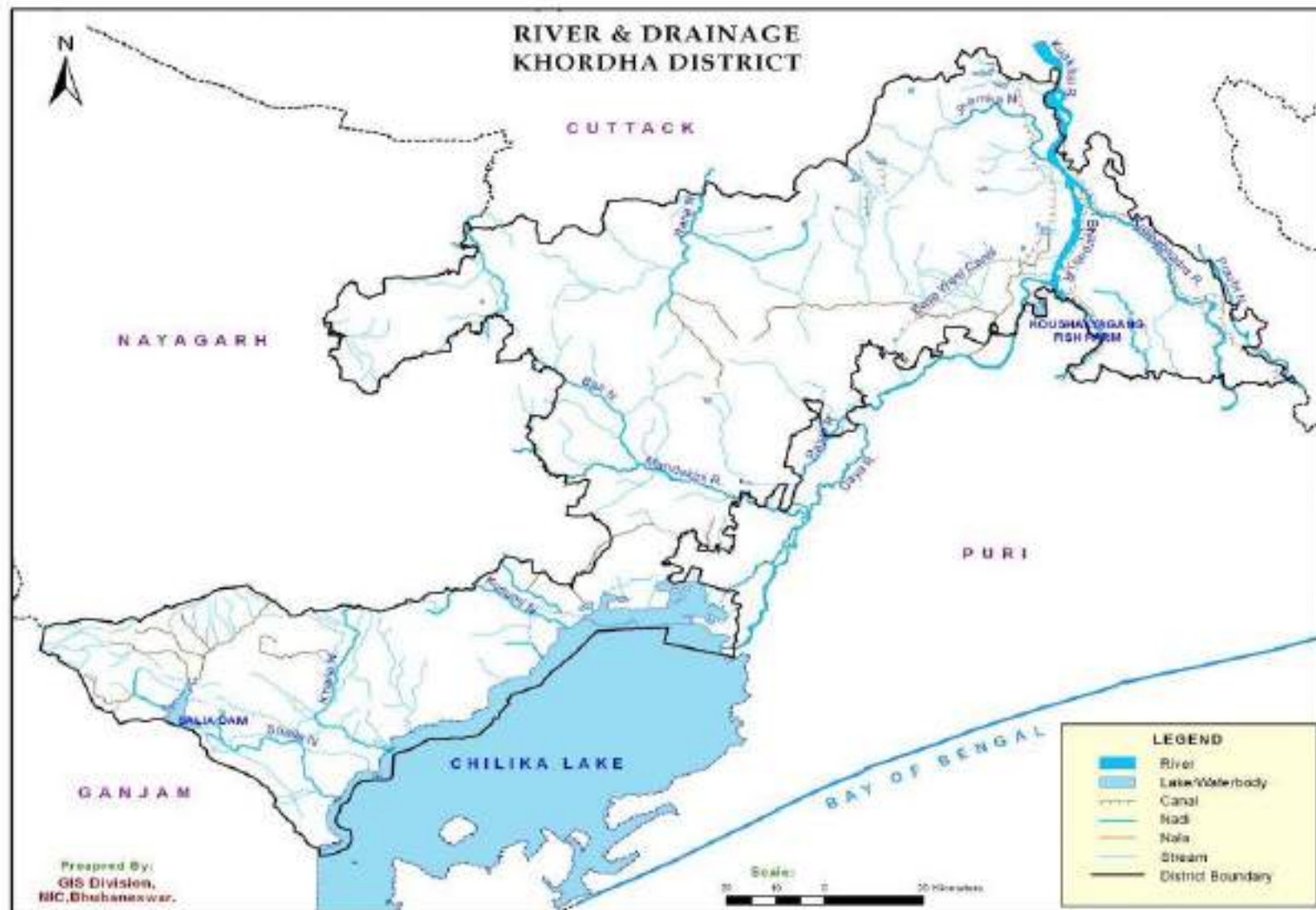
Phanerozoic	Quaternary	Mid to Late Holocene	Bankigarh Fm	Brownish silty clay
		Pleistocene to Holocene	Brahmani/ Mahanadi Fm	Residual soil and alluvium
		Pleistocene	Bolagarh Fm	Laterite/Latosol
	Gondwana Super Group	Lr Cretaceous	Athagarh Fm	Sandstone, Shale
Precambrian	Archean to Proterozoic	Eastern Ghat Sup Gp		Quartz vein Granite gneiss Anorthosite Charnockite gp of rocks Khondalite gp of rocks Quartzite

05. DRAINAGE AND IRRIGATION PATTERN.

The drainage of the district is mainly controlled by rivers like Kuakhai, Kusabhadra, Bhargavi & Daya. Detail of the river system is narrated below.

DRAINAGE SYSTEM WITH DESCRIPTION OF MAIN RIVERS

Sl No.	Name of the River	Place of Origin	Altitude of Origin	Total Length in the District(In Km)	Area Drained (Sq.Km)	% Areas Drained in the District	Process of Deposition of Sediments
1	Kushabhadra	Bhubanapur (Khordha dist)	11.8m	30.0	212.32	48.86	Slow
2	Bhargavi	Balakati (Khordha dist)	7.80m	14.0	Nil	Nil	Slow
3	Kuakhi	Mukameswar	25.92m	26.50	21.85	45.60	Moderate
4	Daya	Nathapur	18.180m	10.10	10.10	51.80	Slow
5	Malaguni	Baunshagarh (Nayagarh dist)	21.20m	35	8.40	62.87	Slow
6	Hada	Hatibari (Nayagarh dist)	19.80m	14	0.92	60.87	No deposition
7	Kusumidhar	Randa (Khordha dist)	60m	33	1.32	100.00	No deposition



06. LAND UTILISATION PATTERN IN THE DISTRICT: FOREST, AGRICULTURAL, HORTICULTURAL, MINING ETC.

Forest:

As per the data provided by the *Divisional Forest Officer, Khordha Division, Khordha*; the land use in the division is as follows

Category of Forest Areas in Khordha Forest Division(Khordha District)			
Category of Forest	Number of Blocks	Area in Ha.	Percentage(%)
Reserved Forest	13	19556.28	30.163
Proposed Reserved Forest	1	97.28	0.15
Demarcated Protected Forest	29	16602.59	25.608
Village Forest	103	677.945	1.046
Protected Forest	-	-	-
DLC Forest	278	5777.312	8.911
Revenue Forest	598	22123.443	34.123
Total Forest Area	1022	64834.85	100

As per the data provided by the *Divisional Forest Officer, Chandaka Wildlife Division, Bhubaneswar*; the land use in the division is as follows

Category of Forest Areas in Chandaka Wildlife Division, Bhubaneswar			
Category of Forest	Number of Blocks	Area in Ha.	Percentage(%)
Reserved Forest	7	9140.81	47.26
Proposed Reserved Forest	11	9219.19	47.67
Demarcated Protected Forest	1	53.87	0.27
Village Forest	0	0	0
Protected Forest	2	21.09	0.109
DLC Forest	0	20056.66	0
Revenue Forest	0	0	0
Total Forest Area	21	38491.62	

As per the data provided by the **Divisional Forest Officer, City Forest Division, Bhubaneswar**; the land use in the division is as follows

Category of Forest Areas in City Forest Division			
Category of Forest	Number of Blocks	Area in Ha.	Percentage(%)
Reserved Forest	1	317.28	40%
Proposed Reserved Forest	-	-	-
Demarcated Protected Forest	-	-	-
Village Forest	5	27.1	-
Protected Forest	-	-	-
DLC Forest	-	616.1424	
Revenue Forest	-	2708.527(Approx)	
Total Forest Area		3669.0494	

As per the data provided by the **Divisional Forest Officer, Chilika Wildlife Division**; the land use in the division is as follows

Category of Forest Areas in Chilika Wildlife Division			
Category of Forest	Number of Blocks	Area in Ha.	Percentage(%)
Reserved Forest	Nil	-	
Proposed Reserved Forest	Nil	-	
Demarcated Protected Forest	1	212.47	
Village Forest	1	13.745	
Protected Forest	Nil	-	
DLC Forest	2	212.074	
Revenue Forest	Not available	-	
Total Forest Area		438.289	0.71%

Agriculture & Horticulture:

Land utilization pattern in the district as per the department of agriculture & horticulture Khordha is as follows;

Blockwise Land Utilization Pattern in Khordha District												
Sl No.	Name of the Blocks	Geographical Area	Forest Area	Misc Tree & Groves	Permanent pasture	Culturable Waste	Land put to non-agricultural use	Barren & Unculturable Land	Other Fallow	Cultivable Area	Current Fallow	Cultivated Area
1	2	3	4	5	6	7	8	9	10	11	12	13
1	Khordha	31860	7060	320	345	182	4607	2533	2185	14627	27	14600
2	Begunia	30610	4374	1725	558	914	3954	1836	620	16629	69	16560
3	Bolagarh	25260	4515	673	569	102	2826	735	10	15830	0	15830
4	Tangi	34374	5010	3247	814	3935	7293	1265	50	12760	0	12760
5	Chilika	20172	1892	770	580	93	3093	1586	410	11748	28	11720
6	Banapur	40650	20720	287	524	118	3001	2339	980	12681	31	12650
7	BBSR	45729	12109	829	571	616	13242	1149	4435	12778	728	12050
8	Jatani	23447	5158	1890	999	331	3991	1195	1880	8003	103	7900
9	Balianta	14971	854	273	172	225	1068	886	1458	10035	95	9940
10	Balipatna	14227	175	354	366	35	1175	482	720	10920	280	10640
	District	281300	61867	10369	5498	6551	44250	14006	12748	126011	1361	124650

Mining:

The Khordha district of Odisha is known for mining a variety of minerals, including: Decorative stone (Khondalite), Building stone, Laterite blocks, Morrums, and Earth. The major mining activities are dependent upon laterite & stone mining. Whereas other associated mining activities are related to morrum, sand & ordinary earth mining. There are three no of khondalite decorative stone sources reported in the district. Hence the total mining area are different for different categories of mineral. Total mining area will be the sum of the lease areas present in the district, which can be abstracted from the mining lease details table annexed herewith.

07. SURFACE WATER AND GROUND WATER SCENARIO OF THE DISTRICT.

The drainage systems i.e. rivers of the district gets filled with water during the monsoon and the gradually it decreases from the month of January to June of each year. In the summer season all rivers become almost dry excepting narrow flow of water within the basin.

The variation of ground water table in the district is as follows:

Sl No	District	Total Annual Ground Water(Ham)Recharge	Total Extraction(Ham)	Annual Extractable Ground Water Resource(Ham)
1	Khordha	46985.97	26216	42849.75

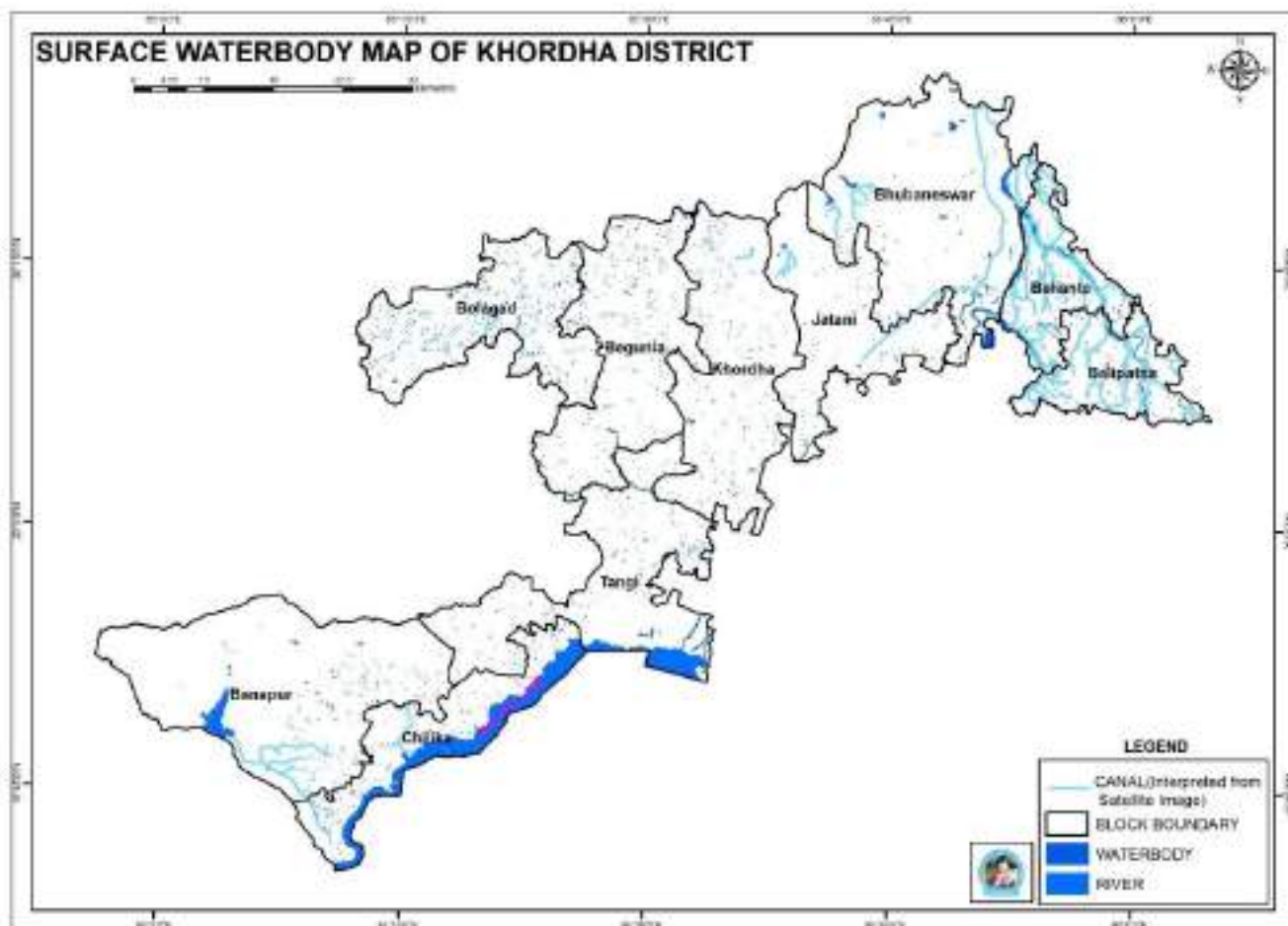


Figure ii Surface Water body Map of Khordha District

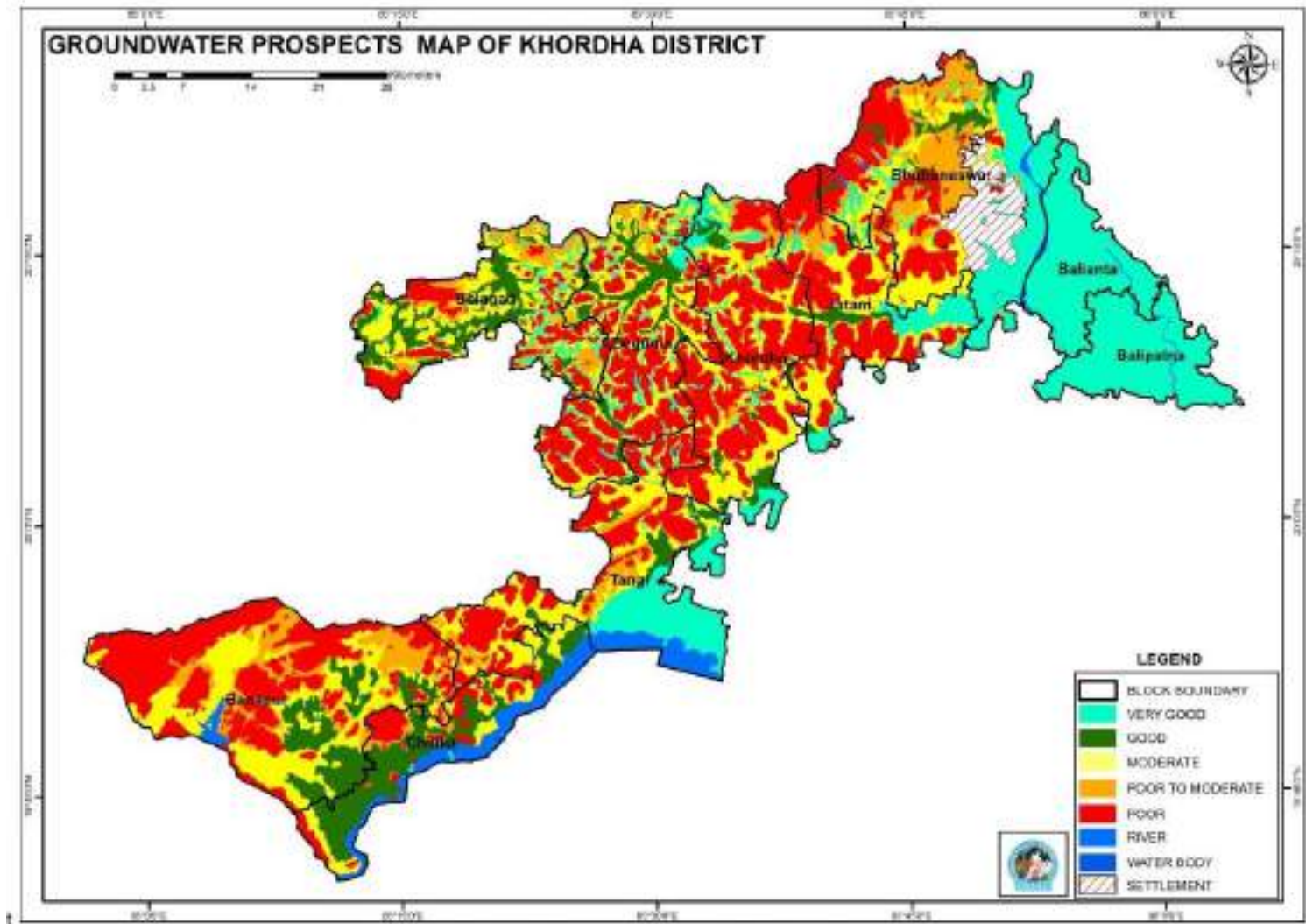
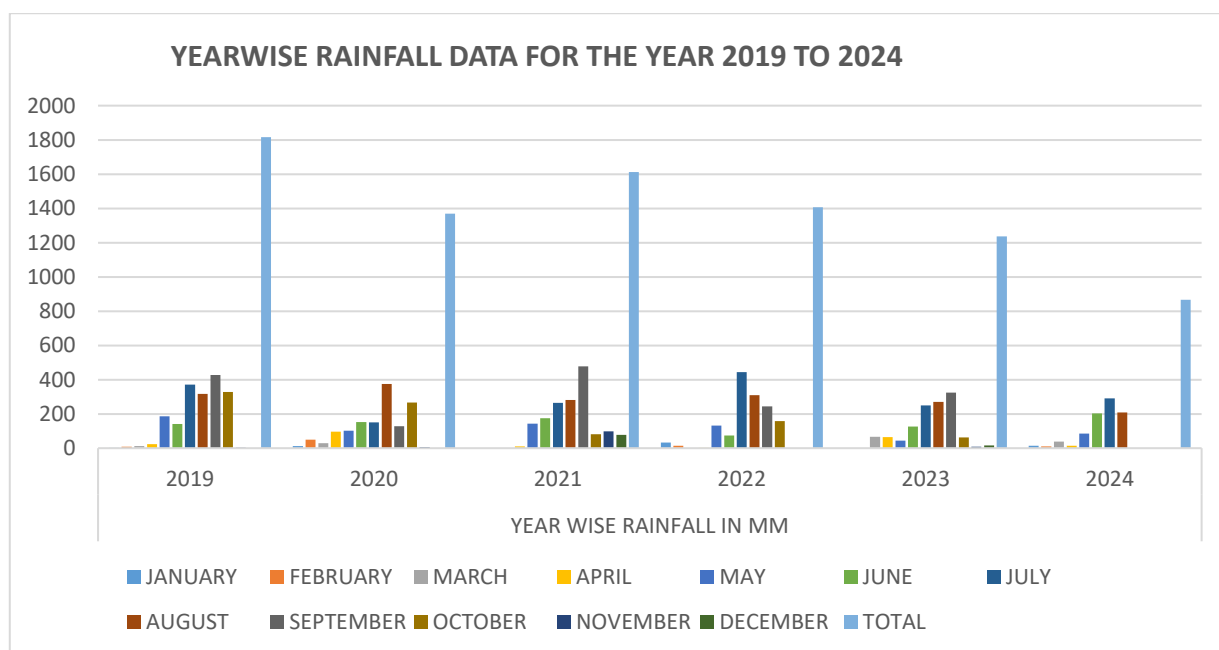


Figure:vii Ground Water Prospects Map of Khordha District

08. RAINFALL OF THE DISTRICT AND CLIMATIC CONDITION.

The district is generally hot with high humidity during April and May and cold during December and January. The monsoon generally breaks during the month of July and continues till end of October. The temperature goes as high as up to 45°C in the summer and up to 7 -8°C during peak winter.

The rainfall statistics of the district for last four years is given below:



Year	January	February	March	April	May	June	July	August	September	October	November	December	Total
2019	1.1	8.06	11.8	24.38	185.59	140.48	370.29	317.46	426.77	328.23	2.12	0	1816.28
2020	12.2	50.32	28.47	97.09	101.68	153.4	150.72	375.12	128.34	265.72	6.1	0	1369.16
2021	0	0	0	10.62	143.24	174.1	265.37	281.66	478.69	82.39	97.96	78.02	1612.05
2022	32.87	13.72	0	0.5	131.97	73.84	443.69	309.67	243.36	157.55	0	0	1407.17
2023	0	0	65.7	65.12	44.43	126.56	249.77	269.36	325.42	63.08	8	19.1	1236.54
2024	14.4	11.36	38.92	14.26	85.39	202.39	291.46	207.91	0	0	0	0	866.09

09. DETAILS OF THE MINING LEASES IN THE DISTRICT AS PER THE FOLLOWING FORMAT.

SL.NO	NAME OF THE MINERAL	NAME OF THE LESSEE	ADDRESS & CONTACT NO. OF LESSEE	MINING LEASE GRANT ORDER NO. & DATE	AREA OF MINING LEASE (IN HA/AC)	PERIOD OF MINING LEASE (INITIAL)		DATE OF COMMENCEMENT OF MINING OPERATION	STATUS (WORKING NON WORKING/TEMP. WORKING FOR DISPATCH ETC.)	CAPTION - CAPTION	OBTAINED ENVIRONMENTAL CLEARANCE (Y/N) IF YES WITH DATE OF GRANT OF E.C	LOCATION OF THE MINING LEASE LAND SCHEDULE AND
						FROM	TO					
1	2	3	4	5	6	7	8	11	12	13	14	15
NAME OF THE TAHASIL:- BEGUNIA												
A1	ROUTAPADA LSQ	SMT SHREEMAYEE PRIYADARSHNEE	AT/PO-KAIPADAR, PS-KHORDHA SADAR, DIST-KHORDHA	691 & 12.02.2021	11.14AC /4.50HA	02.12.2021	01.12.2026	02.12.2021	WORKING	NON-CAPTION	YES, LETTER NO-2865/SEIAA & 22.09.2021	MOUZA:- RAUTAPADA, KHATA NO-1008, PLOT NO-1486, KISSAM-PATITA LAT- 20°09'36.74"N TO 20°09'43.51"N LONG- 85°28'02.35"E TO 85°28'14.21"E
A2	PHULACHHANCHUN I LSQ	DIBAKAR BEHERA	AT/PO-CHHATABAR, PS-CHANDAKA, DIST-KHORDHA, ODISHA-752054	3274 & 05.11.2020	5.355AC /2.16HA	19.01.2022	18.01.2027	19.01.2022	WORKING	NON-CAPTION	YES, LETTER NO-1375/SEIAA & 24.05.2021	MOUZA:- PHULACHHANCHUNI, KHATA NO-199, PLOT NO-219, KISSAM-PATHARBANI LAT-20°11'05.98"N TO 20°11'11.01"N LONG- 85°31'31.92"E TO 85°31'41.17"E

A3	BALIBEREN I LSQ	SRI RAJA KISHORE DASH	PLOT-663,AT-BIJIPUR, PO/PS-TAMANDO,BHU BANESWAR, DIST-KHORDHA	690 & 12.02.2021	8.5AC/3.43HA	28.03.2024	27.03.2029	28.03.2024	WORKING	NON-CAPTIVE	-	MOUZA:-BALIBERNI , KHATA NO-619, PLOT NO-497, KISSAM-BAGAYAT-II LAT- 20°07'45.09"N TO 20°07'54.92"N LONG- 85°27'55.08"E TO 85°28'00.17"E
A4	UTTARESWAR L.S.Q	SRI DURGA PRASANA NAYAK	AT-N-4/208,IRC VILLAGE, PS-NAYAPALLI,BHU BANESWAR, DIST-KHORDHA	692 & 12.02.2021	9.4AC/3.80HA	-	-	-	NON-WORKING	NON-CAPTIVE	-	MOUZA:-UTTARESWAR, KHATA NO-306(AJA), PLOT NO-337, KISSAM-PATITA LAT- 20.15 LONG-85.459
NEW SOURCES												
A5	PATIMALA LSQ(8)	-	-	-	4.942AC /2HA	-	-	-	NON-WORKING	NON-CAPTIVE	-	MOUZA:-PATIMALA, KHATA NO-153, PLOT NO-8, KISSAM-BAGAYAT-I LAT-20.147 LONG-85.5
A6	PATIMALA LSQ(8/512)	-	-	-	4.9424A C/2HA	-	-	-	NON-WORKING	NON-CAPTIVE	-	MOUZA:-PATIMALA, KHATA NO-153, PLOT NO-8/512, KISSAM-BAGAYAT-I LAT-20.148 LONG-85.502
A7	BALIBEREN I LSQ(498)	-	-	-	6.177AC /2.5HA	-	-	-	NON-WORKING	NON-CAPTIVE	-	MOUZA:-BALIBERENI, KHATA NO-619, PLOT NO-498, KISSAM-PATITA LAT-20.133 LONG-85.467
A8	BALIBEREN I LSQ(510)	-	-	-	6.177AC /2.5HA	-	-	-	NON-WORKING	NON-CAPTIVE	-	MOUZA:-BALIBERENI, KHATA NO-619, PLOT NO-510, KISSAM-PATITA LAT- 20.132 LONG-85.469

PRIVATE PLOTS(NEW SOURCES)												
A9	DINGARA LSQ(1756)	-	-	-	0.75AC/ 0.303HA	-	-	-	NON-WORKING	NON-CAPTIVE	-	MOUZA-DINGARA, KHATA-475/4, PLOT-1756,KISSAM-SARADA ANAJALASECHITA-III, LAT- 20.158 , LONG-85.463
SJTA (EXISTING)												
A10	DAKHINESWAR LATERITE AND MOORUM QUARRY (GHA), DAKHINESWAR	SRI RAIBALLAV MOHANTY, S/O-AJAYA KUMAR MOHANTY	AT:- RADHABALLAV SAHI, P.O/P.S/DIST:- KHORDHA, MOB NO.9178003031	9213 & 26.08.2019	AC.12.300 OR 4.98HC.	20.08.2022	19.08.2027	20.08.22	WORKING	NON-CAPTIVE	3004/28.9.2021	MOUZA-DAKHINESWAR, KHATA-536/3, PLOT-240,KISSAM-P.PATITA , LAT-20°09'33.14"N TO 20°09'44.88"N , LONG-85°29'34.06"E TO 85°29'41.70"E
A11	DAKHINESWARA(KAJ) LATERITE AND MOORUM QUARRY	-	-	-	AC.7.950 OR 3.22HC.	-	-	-	NON-WORKING	NON-CAPTIVE	-	MOUZA-DAKHINESWAR, KHATA NO.536/3, PLOT NO.238(P),KISSAM-PATITA ,LAT-20.164 LONG-85.494
A12	DAKHINESWARA(KHA) LATERITE AND MOORUM QUARRY	-	-	-	AC.9.612 OR 3.89 HC.	-	-	-	NON-WORKING	NON-CAPTIVE	-	MOUZA-DAKHINESWAR, KHATA NO.536/3, PLOT NO.238(P), KISSAM-PATITA , LAT- 20.164 , LONG-85.494
A13	DAKHINESWARA(GAJ) LATERITE AND MOORUM QUARRY	-	-	-	AC.21.612 OR 8.75HC.	-	-	-	NON-WORKING	NON-CAPTIVE	-	MOUZA-DAKHINESWAR,KHATA NO.536/3, PLOT NO.234(P),229(P), KISSAM-P.PATITA , LAT-20.161 , LONG-85.492
A14	DAKHINESWARA(UAN) LATERITE	-	-	-	AC.13.050 OR5.28H	-	-	-	NON-WORKING	NON-CAPTIVE	-	MOUZA-DAKHINESWAR,KHATA NO.536/3, PLOT

	AND MOORUM QUARRY											NO.465(P),236(P), KISSAM- P.PATITA , LAT- 20.156 , LONG-85.491
A15	DAKHINESWARA(CH A) LATERITE AND MOORUM QUARRY	-	-	-	AC.10.600 OR 4.29 HC.	-	-	-	NON-WORKING	NON-CAPTIVE	-	MOUZA- DAKHINESWAR,KH ATA NO.536/3, PLOT NO.242(P),243(P), KISSAM- BAGAYAT-II , LAT-20.155 , LONG-85.494
A16	DAKHINESWARA(CH HA) LATERITE AND MOORUM QUARRY	-	-	-	AC.7.8750 OR 3.19 HC.	-	-	-	NON-WORKING	NON-CAPTIVE	-	MOUZA- DAKHINESWAR,KH ATA NO.536/3, PLOT NO.247(P),KISSAM- P.PATITA , LAT-20.157 , LONG-85.494
A17	DAKHINESWARA(JA) LATERITE AND MOORUM QUARRY	-	-	-	AC.6.750 OR 2.73 HC.	-	-	-	NON-WORKING	NON-CAPTIVE	-	MOUZA- DAKHINESWAR,KH ATA NO.536/3, PLOT NO.248(P), KISSAM- P.PATITA , LAT-20.157 , LONG-85.495
A18	DAKHINESWARA(JH A) LATERITE AND MOORUM QUARRY	-	-	-	AC.17.360 OR 7.03 HC.	-	-	-	NON-WORKING	NON-CAPTIVE	-	MOUZA- DAKHINESWAR,KH ATA NO.536/3, PLOT NO.249(P), KISSAM- BAGAYAT-II , LAT-20.154 , LONG-85.497
A19	DAKHINESWARA(NI AN) LATERITE AND MOORUM QUARRY	-	-	-	AC.20.765 OR 8.4HC	-	-	-	NON-WORKING	NON-CAPTIVE	-	MOUZA- DAKHINESWAR,KH ATA NO.536/3, PLOT NO.249(P), KISSAM- BAGAYAT-II , LAT-20.154 , LONG-85.497

NAME OF THE TAHASIL:- KHORDHA												
B1	NARASINGH PRASAD LATERITE STONE QUARRY	SRI RAJENDRA PRASAD SINGH	AT-NEW RAUSAPATNA, PO-BAXIBAZAR, PS-PURIGHAT, DIST-CUTTACK	5037 & 21.09.2020	7.00AC/ 2.83HA	02.07.2021	01.07.2026	02.07.2021	NON-WORKING	NON-CAPTIVE	YES, LETTER NO-SEIAA-442/08-2020 & 09.12.2020	MOUZA:- NARASINGH PRASAD , KHATA NO-383 PLOT NO-25(P), KISSAM-PATITA LAT-20°04'44.1"N TO 20°04'38.0"N LONG-85°35'03.8"E TO 85°35'01.8"E
B2	CHAMPAJHAR LATERITE STONE QUARRY-I	SMT. SWARNALATA MALLICK	AT-SHYAMSUNDAR PUR, NEAR HANUMAN TEMPLE, GOPALPUR, GOBINDAPUR , DIST- CUTTACK	5038 & 21.09.2020	1.99AC/ 0.809HA	21.08.2023	20.08.2028	21.08.2023	WORKING	NON-CAPTIVE	YES, LETTER NO-SEIAA-443/08-2020 & 09.12.2020	MOUZA:- CHAMPAJHAR , KHATA NO-448, PLOT NO-480(P), KISSAM-GOCHAR LAT- 20°04'02.1"N TO 20°04'06.0"N LONG-85°34'08.4"E TO 85°34'12.4"E
B3	CHAMPAJHAR LATERITE STONE QUARRY-II	SMT MALATI RAUTARAY	AT-DURGAPUR,PO -BAJAPUR, PO-KHORDHA SADAR, DIST-KHORDHA	2837 & 6.05.2023	2.00AC/ 0.809HA	25.04.2022	31.03.2027	25.04.2022	WORKING	NON-CAPTIVE	YES, LETTER NO-3986/SEIAA & 07.02.2022	MOUZA:- CHAMPAJHAR , KHATA NO-448, PLOT NO-327(P), KISSAM-GOCHAR LAT- 20°04'09.89"N TO 20°04'13.10"N LONG-85°34'14.32"E TO 85°34'19.11"E
B4	LAHANGA LATERITE STONE QUARRY	SRI HARIHAR SWAIN	AT-KUNJARPADA, PO-GOBINDAPUR, PS-PIPILI, DIST-PURI	5041 & 21.09.2020	7.00AC/ 2.832HA	18.02.2021	17.02.2026	18.02.2021	NON-WORKING	NON-CAPTIVE	YES, LETTER NO-SEIAA-441/08-2020 & 09.12.2020	MOUZA:- LAHANGA, KHATA NO-571, PLOT NO-59, KISSAM-BAGAYATA-II LAT-20°04'12"N TO 20°04'14.6"N LONG-85°32'32.5"E TO 85°32'24.1"E
B5	MUNDA AMBA LATERITE STONE QUARRY-I	SRI SOMADATTA DAS	AT-BALARAMPUR(DANDASAHU), PO/PS-KUJANGA, DIST-	5523 & 05.11.2022	1.99AC/ 0.809HA	09.01.2023	8.102028	09.01.2023	WORKING	NON-CAPTIVE	YES, LETTER NO-SEIAA-444/08-2020 & 09.12.2020	MOUZA:-MUNDA AMBA , KHATA NO-456, PLOT NO-972(P), KISSAM-PADIA LAT-20°1'55.059"N TO 20°1'59.516"N

			JAGATSINGHPUR									LONG-85°32'4.285"E TO 85°32'8.957"E
B6	HALADIPADA LATERITE STONE QUARRY	-	-	-	1.309AC /1.761AC /2.350AC	-	-	-	NON-WORKING	NON-CAPTIVE	-	MOUZA:- HALDIPADA , KHATA NO- 224(AJA), PLOT NO-94,104,102 KISSAM-GRASS GROUND LAT- 20°10'55.01" TO 20°11'02.02"N LONG-85°34'46.01" TO 85°34'54.02"E
B7	MUNDAMBA LATERITE STONE QUARRY - 2	-	-	-	1.821AC /0.736HA	-	-	-	NON-WORKING	NON-CAPTIVE	-	MOUZA:- MUNDAMBA, KHATA NO-458, PLOT NO-262 KISSAM-GOCHAR LAT-20.044 LONG- 85.52
B8	GOPINATHPUR LATERITE STONE QUARRY	-	-	-	0.931AC /0.376HA	-	-	-	NON-WORKING	NON-CAPTIVE	-	MOUZA:- GOPINATHPUR, KHATA NO-469, PLOT NO-659 KISSAM-GOCHAR LAT-20.064 LONG- 85.614
NEW SOURCES												
B9	NARASINH APRASAD LSQ(10)	-	-	-	5.355AC /2.167HA	-	-	-	NON-WORKING	NON-CAPTIVE	-	MOUZA:- NARASINHAPRASAD, KHATA NO-386, PLOT NO-10 KISSAM-PATITA LAT- 20.078 LONG-85.582
B10	KIAJHARI LSQ(1082)	-	-	-	4.942AC /2HA	-	-	-	NON-WORKING	NON-CAPTIVE	-	MOUZA:-KIAJHARI, KHATA NO-731/1, PLOT NO-1082 KISSAM-PATITA LAT-20.094 LONG- 85.56
B11	KIAJHARI LSQ(1401)	-	-	-	4.942AC /2HA	-	-	-	NON-WORKING	NON-CAPTIVE	-	MOUZA:-KIAJHARI, KHATA NO-731/1, PLOT NO-1401 KISSAM-PATITA

												LAT- 20.095 LONG-85.557
B12	JHINKIJHARI LSQ(1330)	-	-	-	12.355A C/5HA	-	-	-	NON- WORKI NG	NON- CAPTI VE	-	MOUZA:- JHINKIJHARI, KHATA NO-600, PLOT NO-1330 KISSAM-PURATANA PATITA LAT- 20.092 LONG-85.611
B13	MADHAPUR LSQ(674)	-	-	-	3.706AC /1.5HA	-	-	-	NON- WORKI NG	NON- CAPTI VE	-	MOUZA:- MADHAPUR, KHATA NO-439, PLOT NO-674 KISSAM- PATITA LAT- 20.127 LONG-85.532
PRIVATE PLOTS(NEW SOURCES)												
B14	KAIPADAR LSQ(2647)	-	-	-	2AC/0.8 09HA	-	-	-	NON- WORKI NG	NON- CAPTI VE	-	MOUZA-KAIPADAR , KHATA-825, PLOT- 2647, KISSAM- SARADA ANJALSECHITA-III, LAT- 20°07'22.68841" TO 20°07 '27.09351" , LONG- 85°33'32.28829" TO 85°33'36.91079"
B15	JAGANNA THPUR LSQ(2/111 2,13/1114, 12/1113)	-	-	-	0.960AC /0.388H A, 0.38AC/ 0.153HA 0.485AC /0.196H A	-	-	-	NON- WORKI NG	NON- CAPTI VE	-	MOUZA- JAGANNATHPUR , KHATA-414/77, PLOT- 2/1112,13/1114,12/ 1113 KISSAM- PURATANA PATITA LAT- 20°03'53.66695" TO 20°04'00.84102" , LONG- 85°34'35.42626" TO 85°34'340.90854"
B16	ARANGA LSQ(330)	-	-	-	11.11AC /4.5HA OUT OF 16.84HA	-	-	-	NON- WORKI NG	NON- CAPTI VE	-	MOUZA-ARANGA , KHATA-334, PLOT- 330,KISSAM- P.PATITA, LAT-

												20.223 , LONG-85.633
B17	MALIPAD A LSQ(15/1640,15/1641,15/1648,15/1262)	-	-	-	1.13AC/ 0.4589 HA	-	-	-	NON-WORKING	NON-CAPTIVE	-	MOUZA-MALIPADA , KHATA-500/482,500/470,500/469 PLOT-15/1640,15/1641,15/1648,15/1262,KISSAM-STHITIBAN , LAT- , LONG-
SJTA(EXISTING)												
B18	NIJAGARHTAPANG (KA) LATERITE AND MORRUM QUARRY	NARENDRA BHAULA	AT:- PLOT NO. LB 264, HB COLONY, KAPILPRASAD, BHIMTANGI, BHUBANESWAR/ MOB. NO.9437094801	1178 DT.22.02.2021	6.10AC/ 2.468HA	22-23	26-27	30.07.22	WORKING	NON CAPTIVE	2759/22.9.2021	MOUZA:- NIJAGARHTAPAN GA , KHATA NO-832/1, PLOT NO-2054(P) ,KISSAMP.PATITA LAT-20°06'07.22"N TO 20°06'16.50"N LONG-85°33'14.81"E TO 85°33'25.61"E
B19	NIJAGARHTAPANG (KHA) LATERITE AND MORRUM QUARRY	RAJA KISHORE DASH	AT:- PLOT NO. 663, BIJIPUR, PO/PS-TAMANDO, KHURDHA/MOB. NO.7008295610	7693/24.11.2020	6.13AC/ 2.48HA	21-22	25-26	30.12.2021	WORKING	NON CAPTIVE	2777/22.9.2021	MOUZA:- NIJAGARHTAPAN GA , KHATA NO-832/1, PLOT NO-2056(P),KISSAMP.PATITA LAT-20°04'57.21"N TO 20°05'04.03"N LONG-85°36'09.68"E TO 85°36'18.22"E
B20	NARASINGHAPRASAD(KA) LATERITE AND MORRUM QUARRY	SATYA MULTIPL EX PVT. LTD., M.D. JAGADISH SANKAR SAHOO	AT:- N-6/321, IRC VILLAGE, NAYAPALLI,BHUBANESWAR, KHORDHA/MOB NO.9439771111	7567 & 02.07.2019	11.56AC /4.678HA	04.07.2024	03.07.2029	04.07.2024	WORKING	NON CAPTIVE	2781/22.9.2021	MOUZA:- NARASINGHAPRASAD , KHATA NO-377/6, PLOT NO-76 ,KISSAMPATITA LAT- 20°04'24.12"N TO 20°04'30.43"N LONG-85°35'33.91"E TO 85°35'46.87"E

B21	NIJAGARHTAPANG (GA) LATERITE AND MORRUM QUARRY	-	-	-	18.91AC /7.652H A	-	-	-	NON-WORKING	NON-CAPTIVE	-	MOUZA:- NIJAGARHTAPAN GA , KHATA NO-832/1, PLOT NO-2052(P) ,KISSAMP.PATITA LAT-20.086 LONG-85.602
B22	NIJAGARHTAPANG (GHA) LATERITE AND MORRUM QUARRY	-	-	-	21.08AC /8.530H A	-	-	-	NON-WORKING	NON-CAPTIVE	-	MOUZA:- NIJAGARHTAPAN GA , KHATA NO-832/1, PLOT NO-2052(P) ,KISSAMP.PATITA LAT-20.086 LONG-85.602
B23	NIJAGARHTAPANG (UAN) LATERITE AND MORRUM QUARRY	-	-	-	15.73AC /6.365H A	-	-	-	NON-WORKING	NON-CAPTIVE	-	MOUZA:- NIJAGARHTAPAN GA , KHATA NO-832/1, PLOT NO-834(P) ,KISSAMP.PATITA LAT-20.082 LONG-85.586
B24	NIJAGARHTAPANG (CHA) LATERITE AND MORRUM QUARRY	-	-	-	24.87AC /10.064H A	-	-	-	NON-WORKING	NON-CAPTIVE	-	MOUZA:- NIJAGARHTAPAN GA , KHATA NO-832/1, PLOT NO-834(P) ,KISSAMP.PATITA LAT-20.082 LONG-85.586
B25	NIJAGARHTAPANG (CHHA) LATERITE AND MORRUM QUARRY	-	-	-	18.46AC /7.47HA	-	-	-	NON-WORKING	NON-CAPTIVE	-	MOUZA:- NIJAGARHTAPAN GA , KHATA NO-832/1, PLOT NO-834(P),KISSAMP.PATITA LAT-20.082 LONG-85.586
B26	NIJAGARHTAPANG (JA) LATERITE AND MORRUM QUARRY	-	-	-	17.93AC /7.256H A	-	-	-	NON-WORKING	NON-CAPTIVE	-	MOUZA:- NIJAGARHTAPAN GA , KHATA NO-832/1, PLOT NO-834(P) ,KISSAMP.PATITA LAT-

												20.082 LONG-85.586
B27	JHINKIJHARI(KA) LATERITE AND MORRUM QUARRY	-	-	-	16.9AC/ 6.839HA	-	-	-	NON- WORKI NG	NON- CAPTI VE	-	MOUZA:- JHINKIJHARI , KHATA NO-600, PLOT NO-1301 ,KISSAM-P.PATITA LAT-20.094 LONG- 85.608
B28	JHINKIJHARI(KHA) LATERITE AND MORRUM QUARRY	-	-	-	26.7AC/ 10.805H A	-	-	-	NON- WORKI NG	NON- CAPTI VE	-	MOUZA:- JHINKIJHARI , KHATA NO-557/7, PLOT NO-1332(P) ,KISSAM-P.PATITA LAT-20.094 LONG- 85.61
B29	JHINKIJHARI(GA) LATERITE AND MORRUM QUARRY	-	-	-	19.7AC/ 7.972HA	-	-	-	NON- WORKI NG	NON- CAPTI VE	-	MOUZA:- JHINKIJHARI , KHATA NO-600, PLOT NO-1330(P) ,KISSAM-P.PATITA LAT-20.091 LONG- 85.611
B30	NARASIN GHAPRAS AD(KHA) LATERITE AND MORRUM QUARRY	-	-	-	19.52AC /7.899H A	-	-	-	NON- WORKI NG	NON- CAPTI VE	-	MOUZA:- NARASINGHAPRAS AD , KHATA NO- 377/6, PLOT NO- 205(P) ,KISSAM- PATITA LAT-20.071 LONG-85.588
B31	NARASIN GHAPRAS AD(GA) LATERITE AND MORRUM QUARRY	-	-	-	16.7AC/ 6.758HA	-	-	-	NON- WORKI NG	NON- CAPTI VE	-	MOUZA:- NARASINGHAPRAS AD , KHATA NO- 377/6, PLOT NO- 205(P),KISSAM- PATITA LAT-20.071 LONG-85.588
B32	CHHATIPUR LATERITE AND MORRUM QUARRY	-	-	-	14AC/5. 665HA	-	-	-	NON- WORKI NG	NON- CAPTI VE	-	MOUZA:- CHHATIPUR , KHATA NO-17, PLOT NO-1503 ,KISSAM-PATITA LAT-20.102 LONG- 85.64

B33	DHAULIM UHAN LATERITE AND MORRUM QUARRY	-	-	-	30.55AC /12.363H A	-	-	-	NON- WORKI NG	NON- CAPTI VE	-	MOUZA:- DHAULIMUHAN , KHATA NO-667/1, PLOT NO-107 ,KISSAM- PATITA(GHASA PADIA) LAT-20.079 LONG-85.595
NEW SOURCES												
B34	JAGANAT HPUR LSQ(1)	-	-	-	0.914AC /0.319H A	-	-	-	NON- WORKI NG	NON- CAPTI VE	-	MOUZA:- JAGANATHPUR , KHATA NO-494, PLOT NO-1 ,KISSAM- BAGAYAT-II LAT- 20.066 LONG- 85.576
B35	JAGANAT HPUR LSQ(8)	-	-	-	1.729AC /0.6HA	-	-	-	NON- WORKI NG	NON- CAPTI VE	-	MOUZA:- JAGANATHPUR , KHATA NO-494, PLOT NO-8 ,KISSAM- PURATANA PATITA LAT- 20.065 LONG-85.576
B36	JAGANAT HPUR LSQ(35)	-	-	-	1.68AC/ 0.6HA	-	-	-	NON- WORKI NG	NON- CAPTI VE	-	MOUZA:- JAGANATHPUR , KHATA NO-494, PLOT NO-35 ,KISSAM- PURATANA PATITA LAT- 20.065 LONG-85.579
B37	NARASINH APRASAD LSQ(205)	-	-	-	12.355A C/5.00H A	-	-	-	NON- WORKI NG	NON- CAPTI VE	-	MOUZA:- NARASINHAPRASA D , KHATA NO- 377/6, PLOT NO- 205,KISSAM- PATITA LAT-20.071 LONG-85.586
B38	DEULTAN GI LSQ(1)	-	-	-	12.355A C/5.00H A	-	-	-	NON- WORKI NG	NON- CAPTI VE	-	MOUZA:- DEULTANGI , KHATA NO-456/2, PLOT NO- 1,KISSAM- PATITA LAT- 20.146 LONG-85.565

B39	KIAJHARI LSQ(1572)	-	-	-	2.549AC /1.0319H A	-	-	-	NON- WORKI NG	NON- CAPTI VE	-	MOUZA:-KIAJHARI, KHATA NO-731/1, PLOT NO- 1572,KISSAM- BAGAYAT-II LAT- 20.085 LONG- 85.567
B40	KIAJHARI LSQ(1786)	-	-	-	12.355A C/5.00H A	-	-	-	NON- WORKI NG	NON- CAPTI VE	-	MOUZA:-KIAJHARI, KHATA NO-731/1, PLOT NO- 1786,KISSAM- PATITA LAT- 20.085 LONG-85.569
B41	DURGAPU R LSQ(764)	-	-	-	12.355A C/5.00H A	-	-	-	NON- WORKI NG	NON- CAPTI VE	-	MOUZA:- DURGAPUR, KHATA NO-312/2, PLOT NO- 764,KISSAM- PATITA LAT- 20.098 LONG-85.616
B42	DURGAPU R LSQ(779)	-	-	-	7.857AC /3.18HA	-	-	-	NON- WORKI NG	NON- CAPTI VE	-	MOUZA:- DURGAPUR, KHATA NO-312/2, PLOT NO- 779,KISSAM- BAGAYAT-I LAT- 20.095 LONG- 85.618
B43	NIJGARTA PANG LSQ(1056)	-	-	-	12.355A C/5.00H A	-	-	-	NON- WORKI NG	NON- CAPTI VE	-	MOUZA:- NIJGARTAPANG, KHATA NO-832/1, PLOT NO- 1056,KISSAM- P.PATITA LAT- 20.083 LONG-85.6
B44	BAJAPUR LSQ(1884)	-	-	-	5.386AC /2.18HA	-	-	-	NON- WORKI NG	NON- CAPTI VE	-	MOUZA:-BAJAPUR, KHATA NO-888/3, PLOT NO- 1884,KISSAM- PATITA LAT- 20.121 LONG-85.608
B45	MADHAP UR LSQ(378)	-	-	-	6.177AC /2.5HA	-	-	-	NON- WORKI NG	NON- CAPTI VE	-	MOUZA:- MADHAPUR, KHATA NO-434/1, PLOT NO- 378,KISSAM-

												PATITA LAT- 20.131 LONG-85.535
B46	MADHAPUR LSQ(373)	-	-	-	6.177AC /2.5HA	-	-	-	NON-WORKING	NON-CAPTIVE	-	MOUZA:- MADHAPUR, KHATA NO-434/1, PLOT NO- 373,KISSAM- PATITA LAT- 20.131 LONG-85.532
B47	MADHAPUR LSQ(673)	-	-	-	8.648AC /3.5HA	-	-	-	NON-WORKING	NON-CAPTIVE	-	MOUZA:- MADHAPUR, KHATA NO-434/1, PLOT NO- 673,KISSAM- PATITA LAT- 20.125 LONG-85.533
NAME OF THE TAHASIL:- TANGI												
C1	DAMANBHUI LATERITE STONE QUARRY- A	PRAHALAD BISWAL	AT- KAITHAPALLA, PO-BIRIBADI, PS-TANGI, DIST- KHORDHA,ODI SHA-752023	2246&20.10 2020	10.23AC /4.139H A	25.04.2 022	24.04 .2027	25.04.20 22	NON-WORKING	NON-CAPTIVE	YES,LETTER NO- 1660/SEIAA & 06.07.2024	MOUZA:- DAMANBHUI , KHATA NO-708, PLOT NO-2161 (P) KISSAM-GOCHAR LAT-20°03'18.47"N TO 20°03'24.95"N LONG- 85°31'35.534"E TO 85°31'49.348"E
C2	BARIKO LATERITE STONE QUARRY	GIRIDHARI DAS	AT/PO- BADAPARI, PS- TANGI, DIST- KHORDHA, ODISHA-752023	1709 & 23.07.2020	2.173AC /0.879H A	28.01.2 021	27.01 .2026	28.01.20 21	NON-WORKING	NON-CAPTIVE	YES, LETTER NO- 10371/SEIA A & 17.12.2020	MOUZA:-BARIKO , KHATA NO-270, PLOT NO-673 KISSAM-PATHAR CHATAN LAT- 19°55'43.336"N TO 19°55'37.168"N LONG- 85°21'22..715" TO 85°21'19.117"E

C3	OLASINGH LATERITE STONE QUARRY-B	BISWANTH BEHERA	AT-MAITRI BIHAR,PO-CHANDRASEKHARPUR, DIST-KHORDHA, ODISHA-752023	2247 & 20.10.2020	12.35AC /4.997HA	10.08.2021	09.08.2026	10.08.2021	WORKING	NON-CAPTIVE	YES, LETTER NO-1511/SEIAA & 30.06.2021	MOUZA:- OLASINGH , KHATA NO-372, PLOT NO-593(P) KISSAM-GOCHAR LAT-20°03'35.214"N TO 20°03'20.847"N LONG-85°30'53.174"E TO 85°30'45.619"E
C4	JAGATAPUR LATERITE STONE QUARRY	ANANDA PRADHAN	AT-NANAPADA, PO/PS-NIRAKARPUR, DIST-KHORDHA	1720 & 24.07.2020	2.605AC /1.054HA	19.01.2021	18.01.2026	19.01.2021	WORKING	NON-CAPTIVE	YES, LETTER NO-10373/SEIAA & 17.12.2020	MOUZA:- JAGATAPUR , KHATA NO-392, PLOT NO-262 KISSAM-PATHARTANGI LAT-20°00'46.1"N TO 20°00'40.4"N LONG-85°31'00.1"E TO 85°30'55.1"E
C5	DAMANBHUI LATERITE STONE QUARRY-C	DURYODHAN RANASINGH	AT-KAITHAPALLA, PO-BIRIBADI, PS-TANGI, DIST-KHORDHA,ODISHA-752023	2250&20.10.2020	12.35AC /4.997HA	23.07.2021	22.07.2026	23.07.2021	WORKING	NON-CAPTIVE	YES, LETTER NO-1076/SEIAA & 26.03.2021	MOUZA:- DAMANBHUI , KHATA NO-705, PLOT NO-731(P) KISSAM-PATITA LAT-20°04'09.044"N TO 20°03' 57.351"N LONG-85°32'00.816"E TO 85°31'52.079"E
C6	GAYABANDHA LATERITE STONE QUARRY	SRI PRAHALAD BISWAL	AT-KAITHAPALLA, PO-BIRIBADI, PS-TANGI, DIST-KHORDHA,ODISHA-752023	2244 & 20.10.2020	12.35AC /4.997HA	25.04.2022	24.04.2027	25.04.2022	WORKING	NON-CAPTIVE	YES, LETTER NO-4218/SEIAA & 15.03.2022	MOUZA:- GAYABANDHA , KHATA NO-338, PLOT NO-763 KISSAM-PURATANAPATITA LAT-20°04'20.7"N TO 20°04'33.4"N LONG-85°31'15.0"E TO 85°31'31.8"E

C7	OLASINGH LATERITE STONE QUARRY-A	ABHIMANYU BEHERA	FLAT NO-402, JAGANATH SAKUNTALA APARTMENT, PS-NAYAPALLI, DIST-KHORDHA, ODISHA-752023	2249 & 20.10.2020	12.35AC /4.997HA	14.10.2022	13.10.2027	14.10.2022	WORKING	NON-CAPTIVE	YES, LETTER NO-1507/SEIAA & 30.06.2021	MOUZA:- OLASINGH, KHATA NO-372, PLOT NO-337(P) KISSAM-GOCHAR LAT-20°04'02.561"N TO 20°03'49.161"N LONG-85°29'55.24"E TO 85°29'47.196"E
C8	NAYAKOTA LATERITE STONE QUARRY-A	PRATAP KISHORE MOHANTY	AT-210 CUTTACK ROAD, PS-LAXMINAGAR, BHUBANESWAR, DIST-KHORDHA, ODISHA	1710 & 23.07.2020	12.35AC /4.997HA	08.02.2021	07.02.2026	08.02.2021	WORKING	NON-CAPTIVE	YES, LETTER NO-10382/SEIAA & 17.12.2020	MOUZA:- NAYAKOTA, KHATA NO-293, PLOT NO-440 KISSAM-PURATANAPATITA LAT- 20°04'25.1"N TO 20°04'18.9"N LONG-85°30'25.5"E TO 85°30'14.8"E
C9	OLASINGH LATERITE STONE QUARRY-C	ABHIMANYU BEHERA	FLAT NO-402, JAGANATH SAKUNTALA APARTMENT, PS-NAYAPALLI, DIST-KHORDHA, ODISHA-752023	2248 & 20.10.2020	12.35AC /4.997HA	10.08.2021	09.08.2026	10.08.2021	WORKING	NON-CAPTIVE	YES, LETTER NO-1563/SEIAA & 30.06.2021	MOUZA:- OLASINGH, KHATA NO-372, PLOT NO-541(P) KISSAM-GOCHAR LAT-20°03'59.852"N TO 20°03'51.590"N LONG-85°29'41.643"E TO 85°29'29.773"E
C10	ARANGALSQ-B	SMT MINAKSHI PRADHAN	AT-JAJARSINGH, PS-KHORDHA, DIST-KHORDHA, ODISHA-752027	842 & 24.07.2020	12.35AC /4.997HA	24.06.2024	23.06.2029	24.06.2024	WORKING	NON-CAPTIVE	YES, LETTER NO-EC24B001 OR186898 & 25.04.2024	MOUZA:-ARANGA, KHATA NO-518, PLOT NO-1049(P) KISSAM-PURATANAPATITA LAT- 20°04'07.0"N TO 20°04'16.9"N LONG-85°29'18.6"E TO 85°29'27.7"E
C11	TALAGADA KUHUDI L.S.Q-7	-	-	-	5AC/2.023HA	-	-	-	NON-WORKING	NON-CAPTIVE	-	MOUZA:- TALAGADA, KHATA NO-226, PLOT NO-283 KISSAM-PURATANAPATITA LAT- 19°53'38.90"N TO 19°53'45.03"N

												LONG-85°21'02.49"E TO 85°21'09.90"E
C12	RAMACH ANDRAPUR LATERITE STONE QUARRY-2	-	-	-	4.825AC /1.952H A	-	-	-	NON-WORKING	NON-CAPTIVE	-	MOUZA:- RAMACHANDRAPUR , KHATA NO-465, PLOT NO-640 KISSAM-PATHARA TANGI LAT- 19.931 LONG-85.358
C13	ARANGA LSQ A	-	-	-	12.35AC /4.997H A	-	-	-	NON-WORKING	NON-CAPTIVE	-	MOUZA:- ARANGA, KHATA NO-518, PLOT NO-1049(P) KISSAM-PATITA LAT- 20°04'00.1"N TO 20°04'09.2"N LONG-85°29'22.7"E TO 85°29'35.2"E
C14	RAMACH ANDRAPUR LATERITE STONE QUARRY-1	-	-	-	0.868AC /0.352H A	-	-	-	NON-WORKING	NON-CAPTIVE	-	MOUZA:- RAMACHANDRAPUR , KHATA NO-463, PLOT NO-651 KISSAM-PATHARA TANGI LAT- 19.931 LONG-85.359
NEW SOURCES												
C15	GOBINDP RASAD LSQ(47,41)	-	-	-	1.769AC /0.716H A	-	-	-	NON-WORKING	NON-CAPTIVE	-	MOUZA:- GOBINDPRASAD, KHATA NO-164, PLOT NO-47,41 KISSAM-BAGAYATI II LAT- 20.018 & 20.019 LONG-85.46 & 85.46
C16	RATAMATI LSQ(995)	-	-	-	5.623AC /2.276H A	-	-	-	NON-WORKING	NON-CAPTIVE	-	MOUZA:- RATAMATI, KHATA NO-350, PLOT NO-995 KISSAM-PATHAR BANI LAT-20.014 LONG-85.485
C17	BADAPOKHARIA LSQ(1126)	-	-	-	4.168AC /1.687H A	-	-	-	NON-WORKING	NON-CAPTIVE	-	MOUZA:- BADAPOKHARIA, KHATA NO-1362, PLOT NO-1126

													KISSAM-P. PATITA LAT- 19.988 LONG-85.478
C18	BADAPOK HARIA LSQ(1147)	-	-	-	4.074AC /1.649H A	-	-	-	NON- WORKI NG	NON- CAPTI VE	-	MOUZA:- BADAPOKHARIA, KHATA NO-1362, PLOT NO-1147 KISSAM-P. PATITA LAT- 19.987 LONG-85.477	
C19	TALAGAR A_ KUHUDI LSQ(510)	-	-	-	12.355A C/5.00H A	-	-	-	NON- WORKI NG	NON- CAPTI VE	-	MOUZA:- TALAGARA_ KUHUDI, KHATA NO-226, PLOT NO- 510 KISSAM- P.PATITA LAT- 19.89 LONG- 85.348	
C20	BHOBARA LSQ(21)	-	-	-	4.904AC /1.985H A	-	-	-	NON- WORKI NG	NON- CAPTI VE	-	MOUZA:- BHOBARA, KHATA NO-217, PLOT NO- 21 KISSAM- PURATANA PATITA LAT- 19.955 LONG-85.369	
C21	RAMACH ANDRAPU R LSQ(639)	-	-	-	4.237AC /1.715H A	-	-	-	NON- WORKI NG	NON- CAPTI VE	-	MOUZA:- RAMACHANDRAP UR, KHATA NO- 465, PLOT NO-639 KISSAM-PATHAR TANGI LAT- 19.932 LONG-85.356	
C22	OLASING H LSQ(271)	-	-	-	9.809AC /3.97HA	-	-	-	NON- WORKI NG	NON- CAPTI VE	-	MOUZA:- OLASINGH , KHATA NO-370, PLOT NO- 271 KISSAM- P.PATITA LAT- 20.064 LONG- 85.496	
C23	OLASING H LSQ(430)	-	-	-	3.358AC /1.359H A	-	-	-	NON- WORKI NG	NON- CAPTI VE	-	MOUZA:- OLASINGH , KHATA NO-370, PLOT NO- 430 KISSAM- BAGAYAT-II LAT- 20.065 LONG- 85.502	

C24	NIJAGARA_KUHUDI LSQ(637)	-	-	-	12.355A C/5.00HA	-	-	-	NON-WORKING	NON-CAPTIVE	-	MOUZA:- NIJAGARA_KUHUDI I , KHATA NO-800, PLOT NO-637 KISSAM-P.PATITA LAT- 19.881 LONG-85.351
C25	RASULPUR LSQ(464)	-	-	-	4.942AC /2.00HA	-	-	-	NON-WORKING	NON-CAPTIVE	-	MOUZA:- RASULPUR , KHATA NO-286, PLOT NO-464 KISSAM-P.PATITA LAT- 19.953 LONG-85.461
C26	BARIKO LSQ(574)	-	-	-	0.5231A C/0.2117HA	-	-	-	NON-WORKING	NON-CAPTIVE	-	MOUZA:- BARIKO , KHATA NO-213/66, PLOT NO-574 KISSAM-B.F-2 LAT- 19.932 LONG-85.354
PRIVATE PLOTS(NEW SOURCES)												
C27	RAMACHANDRAPUR LSQ(679/16)	-	-	-	2.000AC /0.809HA	-	-	-	NON-WORKING	NON-CAPTIVE	-	MOUZA-RAMACHANDRAPUR , KHATA-575/72, PLOT-679/16, KISSAM- BAGAYAT-II, LAT- 19.933 , LONG-85.359
C28	TANKOL LSQ(739,739/1772,739/1773)	-	-	-	0.49AC/ 0.198HA	-	-	-	NON-WORKING	NON-CAPTIVE	-	MOUZA-TANKOL , KHATA-325, PLOT-739,739/1772,739/1773 KISSAM-SARADA ANJALSECHITA-II, LAT- 20.039 , LONG-85.442
C29	TANKOL LSQ(740)	-	-	-	0.43AC/ 0.174HA	-	-	-	NON-WORKING	NON-CAPTIVE	-	MOUZA-TANKOL , KHATA-324, PLOT-740,KISSAM-SARADA ANJALSECHITA-II, LAT- 20.039 , LONG-85.441

C30	SAHADAG HAI LSQ(652,6 53)	-	-	-	1.47AC/ 0.594HA	-	-	-	NON- WORKI NG	NON- CAPTI VE	-	MOUZA- SAHADAGHAI , KHATA-179, PLOT- 652,653,KISSAM- SARADA ANJALSECHITA-II, LAT- 20°01'30.52668" TO 20°06'32.98872" , LONG- 85°26'12.56244" TO 85°26'13.72164"
C31	OLASING H LSQ(386)	-	-	-	1.855AC /0.75HA	-	-	-	NON- WORKI NG	NON- CAPTI VE	-	MOUZA-OLASINGH , KHATA-266/44, PLOT-386,KISSAM- BIALI, LAT- 20°03'58.89345" TO 20°04'02.82710" , LONG- 85°30'11.94434" TO 85°30'15.76664"
C32	DAMANB HUIN LSQ(942/2 196)	-	-	-	0.5000A C./0.202 HA	-	-	-	NON- WORKI NG	NON- CAPTI VE	-	MOUZA- DAMANBHUIIN , KHATA-669/87, PLOT- 942/2196,KISSAM- PATITA, LAT- 20°03'33.09768" TO 20°03'34.77996" , LONG- 85°31'36.17544" TO 85°31'37.62264"
C33	PATRAPA DA LSQ(228/2 68)	-	-	-	0.48AC./ 0.194HA	-	-	-	NON- WORKI NG	NON- CAPTI VE	-	MOUZA- PATRAPADA , KHATA-96/93, PLOT- 228/268,KISSAM- SARADA-III, LAT- 19°58'17.65020" TO19°58'19.47900" , LONG- 85°27'21.94092" TO 85°27'23.77512"

C34	PATRAPADA LSQ(229)	-	-	-	0.504AC /0.203HA	-	-	-	NON-WORKING	NON-CAPTIVE	-	MOUZA-PATRAPADA , KHATA-96/96, PLOT-229,KISSAM-SARADA-III, LAT-- 19°58'14.59164" TO19°58'16.79232' , LONG- 85°27'17.45496" TO 85°27'19.20276"
C35	NALASINGH LSQ(631)	-	-	-	2.55AC/ 1.031HA	-	-	-	NON-WORKING	NON-CAPTIVE	-	MOUZA-NALASINGH, KHATA-519, PLOT- 631,KISSAM-BAGAYATA- II, LAT- 19.955, LONG- 85.369
C36	NUAGAON LSQ(18/735)	-	-	-	0.882AC /0.356HA	-	-	-	NON-WORKING	NON-CAPTIVE	-	MOUZA-NUAGAON, KHATA-148/147, PLOT- 18/735,KISSAM-SARADA- III, LAT- 19.941 , LONG- 85.381
C37	DINABANDHUPUR LSQ(72/687,71/698)	-	-	-	3.3AC/1.335HA, 2.682AC /1.085HA	-	-	-	NON-WORKING	NON-CAPTIVE	-	MOUZA-DINABANDHUPUR, KHATA-130/127, PLOT- 72/687,71/698,KISSAM-PURATANA PATITA, LAT-19.873, LONG-85.245
C38	TALAGADAKUHUDI LSQ(169)	-	-	-	1.667AC /0.674HA	-	-	-	NON-WORKING	NON-CAPTIVE	-	MOUZA-TALAGADAKUHUDI , KHATA-29, PLOT- 169,KISSAM-SARAD-III, LAT- 19.898, LONG- 85.353
C39	BARIKO LSQ(606)	-	-	-	0.783AC /0.316HA	-	-	-	NON-WORKING	NON-CAPTIVE	-	MOUZA-BARIKO, KHATA-37, PLOT- 606,KISSAM-BAJEFASALA-II, LAT-19.93, LONG- 85.353

C40	RAMACHANDRAPUR LSQ(828)	-	-	-	0.464AC /0.187HA	-	-	-	NON-WORKING	NON-CAPTIVE	-	MOUZA- RAMACHANDRAPUR, KHATA-348/377, PLOT-828, KISSAM-SARAD-III, LAT-19.933, LONG-85.362
NAME OF THE TAHASIL:- BOLAGARH												
NEW SOURCES												
D1	GODIPATANA LSQ(124)	-	-	-	5.732AC /2.32HA	-	-	-	NON-WORKING	NON-CAPTIVE	-	MOUZA:- GODIPATANA , KHATA NO-224, PLOT NO-124 KISSAM-PATITA LAT- 20.158 LONG-85.449
D2	CHALANAPARA LSQ(128)	-	-	-	7.514AC /3.041HA	-	-	-	NON-WORKING	NON-CAPTIVE	-	MOUZA:- CHALANAPARA , KHATA NO-184, PLOT NO-128 KISSAM-MUNDIA LAT- 20.206 LONG-85.237
D3	GOBARDHANPUR LSQ(151)	-	-	-	11.119AC /4.5HA	-	-	-	NON-WORKING	NON-CAPTIVE	-	MOUZA:- GOBARDHANPUR , KHATA NO-365, PLOT NO-151 KISSAM-PAHADA LAT- 20.22 LONG- 85.221
D4	NUAPARA LSQ(441)	-	-	-	4.942AC /2HA	-	-	-	NON-WORKING	NON-CAPTIVE	-	MOUZA:- NUAPARA , KHATA NO-161, PLOT NO-441 KISSAM-PARBAT LAT-20.206 LONG-85.236

NAME OF THE TAHASIL:- JATANI												
NEW SOURCES												
E1	GOPINATHPUR LSQ(127)	-	-	-	4.942AC /2HA	-	-	-	NON-WORKING	NON-CAPTIVE	-	MOUZA:- GOPINATHPUR , KHATA NO-66, PLOT NO-127 KISSAM-PATHAR TANGI LAT- 20.179 LONG-85.708
E2	GOPINATHPUR LSQ(124)	-	-	-	4.942AC /2HA	-	-	-	NON-WORKING	NON-CAPTIVE	-	MOUZA:- GOPINATHPUR , KHATA NO-67, PLOT NO-124 KISSAM-PATHAR TANGI LAT-20.181 LONG-85.707
SJTA												
NEW SOURCES												
E3	BURHANGARA LSQ(486)	-	-	-	2.965AC /1.2HA	-	-	-	NON-WORKING	NON-CAPTIVE	-	MOUZA:- BURHANGARA , KHATA NO-460, PLOT NO-486 KISSAM-P.PATITA LAT- 20.073 LONG-85.668
E4	BURHANGARA LSQ(761)	-	-	-	3.706AC /1.5HA	-	-	-	NON-WORKING	NON-CAPTIVE	-	MOUZA:- BURHANGARA , KHATA NO-460, PLOT NO-761 KISSAM-P.PATITA LAT- 20.071 LONG-85.668
E5	BURHANGARA LSQ(1068)	-	-	-	3.706AC /1.5HA	-	-	-	NON-WORKING	NON-CAPTIVE	-	MOUZA:- BURHANGARA , KHATA NO-460, PLOT NO-1068 KISSAM-P.PATITA LAT-20.074 LONG- 85.669

E6	KANTIA LSQ(4059)	-	-	-	11.119A C/4.5HA	-	-	-	NON- WORKI NG	NON- CAPTI VE	-	MOUZA:- KANTIA, KHATA NO- 1036/53, PLOT NO- 4059 KISSAM- P.PATITA LAT- 20.154 LONG- 85.743
NAME OF THE TAHASIL:- CHILIKA												
NEW SOURCES												
F1	CHHOTAR APURSA AN LSQ(285)	-	-	-	11.119A C/4.5HA	-	-	-	NON- WORKI NG	NON- CAPTI VE	-	MOUZA:- CHHOTARAPURSA SAN, KHATA NO- 474, PLOT NO-285 KISSAM-PATITA LAT-19.827 LONG- 85.302

**NB: In the above table omitted Columns are,
Column- 09 & 10, Period of Mining lease (1st/2nd...renewal)-NA
Column-13, Use (Captive/ Non-Captive) - All Non-Captive
Column-16, Open cast/ Underground- All sources are open cast**

10. DETAILS OF ROYALTY OR REVENUE RECEIVED IN LAST THREE YEARS

Revenue collected for **Laterite Stone**.

ROYALTY FOR LATERITE					
Sl. No.	Name of the Tahasil	Name of Source	Revenue Collected for last three years (in Rs)		
			2021-22	2022-23	2023-24
1	Begunia	Routapada LSQ	53,62,807.50	53,62,807.50	53,62,807.50
2		Phulachhanchuni LSQ	22,69,305.00	27,03,205.71	27,03,205.71
3		Balibereni LSQ	-	-	-
4		Uttareswar L.S.Q	-	-	-
5		Dakhineswar Laterite and Moorum quarry (Gha), Dakhineswar	-	-	-
6		Dakhineswara(Ka) Laterite and Moorum Quarry	-	-	-
7		Dakhineswara(Kha) Laterite and Moorum Quarry	-	-	-
8		Dakhineswara(Ga) Laterite and Moorum Quarry	-	-	-
9		Dakhineswara(Uan) Laterite and Moorum Quarry	-	-	-
10		Dakhineswara(Cha) Laterite and Moorum Quarry	-	-	-
11		Dakhineswara(Chha) Laterite and Moorum Quarry	-	-	-
12		Dakhineswara(Ja) Laterite and Moorum Quarry	-	-	-
13		Dakhineswara(Jha) Laterite and Moorum Quarry	-	-	-
14		Dakhineswara(Nian) Laterite and Moorum Quarry	-	-	-
15	Khordha	Narasingh Prasad Laterite Stone Quarry	308000	-	-
16		Champajhar Laterite Stone Quarry-I	-	-	1024000
17		Champajhar Laterite Stone Quarry-II	-	3,65,000.00	3,65,000.00
18		Lahanga Laterite Stone Quarry	2857000	-	-
19		Munda Amba Laterite Stone Quarry-I	-	2,34,000.00	2,34,000.00
20		HALADIPADA LATERITE STONE QUARRY	-	-	-
21		Mundamba Laterite Stone Quarry -2	-	-	-
22		Gopinathpur Laterite Stone Quarry	-	-	-
23		Nijagarhtapang(Ka) Laterite and Morrur Quarry	-	-	-
24		Nijagarhtapang(Kha) Laterite and Morrur Quarry	-	-	-
25		Narasinghaprasad(Ka) Laterite and Morrur Quarry	-	-	-
26		Nijagarhtapang(Ga) Laterite and Morrur Quarry	-	-	-
27		Nijagarhtapang(Gha) Laterite and Morrur Quarry	-	-	-

28		Nijagarhtapang(Uan) Laterite and Morrum Quarry	-	-	-
29		Nijagarhtapang(Cha) Laterite and Morrum Quarry	-	-	-
30		Nijagarhtapang(Chha) Laterite and Morrum Quarry	-	-	-
31		Nijagarhtapang(Ja) Laterite and Morrum Quarry	-	-	-
32		Jhinkijhari(Ka) Laterite and Morrum Quarry	-	-	-
33		Jhinkijhari(Kha) Laterite and Morrum Quarry	-	-	-
34		Jhinkijhari(Ga) Laterite and Morrum Quarry	-	-	-
35		Narasinghaprasad(Kha) Laterite and Morrum Quarry	-	-	-
36		Narasinghaprasad(Ga) Laterite and Morrum Quarry	-	-	-
37		Chhatipur Laterite and Morrum Quarry	-	-	-
38		Dhaulimuhan Laterite and Morrum Quarry	-	-	-
39	Tangi	Damanbhuin Laterite Stone Quarry-A	-	301500	301500
40		Bariko Laterite Stone Quarry	307500	307500	307500
41		Olasingh Laterite Stone Quarry-B	410000	410000	410000
42		Jagatapur Laterite Stone Quarry	547500	547500	547500
43		Damanbhuin Laterite Stone Quarry-C	378000	378000	378000
44		Gayabandha Laterite Stone Quarry	-	361800	361800
45		Olasingh Laterite Stone Quarry-A	-	4,00,000.00	4,00,000.00
46		Nayakota Laterite Stone Quarry-A	363600	363600	363600
47		Olasingh Laterite Stone Quarry-C	400000	400000	400000
48		ARANGA LSQ-B	-	-	-
49		Talagada Kuhudi L.S.Q-7	-	-	-
50		Ramachandrapur Laterite Stone Quarry-2	-	-	-
51		ARANGA LSQ A	-	-	-
52		Ramachandrapur Laterite Stone Quarry-1	-	-	-

11.DETAILS OF PRODUCTION OF MINOR MINERAL IN LAST THREE YEARS.

Production of **Laterite Stone**

PRODUCTION OF LATERITE					
Sl. No.	Name of the Tahasil	Name of Source	Production for last three years (in Cum)		
			2021-22	2022-23	2023-24
1	Begunia	Routapada LSQ	25177.5	25177.5	25177.5
2		Phulachhanchuni LSQ	10755	10755	10755
3		Balibereni LSQ	-	-	-
4		Uttareswar L.S.Q	-	-	-
5		Dakhineswar Laterite and Moorum quarry (Gha), Dakhineswar	-	-	-
6		Dakhineswara(Ka) Laterite and Moorum Quarry	-	-	-
7		Dakhineswara(Kha) Laterite and Moorum Quarry	-	-	-
8		Dakhineswara(Ga) Laterite and Moorum Quarry	-	-	-
9		Dakhineswara(Uan) Laterite and Moorum Quarry	-	-	-
10		Dakhineswara(Cha) Laterite and Moorum Quarry	-	-	-
11		Dakhineswara(Chha) Laterite and Moorum Quarry	-	-	-
12		Dakhineswara(Ja) Laterite and Moorum Quarry	-	-	-
13		Dakhineswara(Jha) Laterite and Moorum Quarry	-	-	-
14		Dakhineswara(Nian) Laterite and Moorum Quarry	-	-	-
15	Khordha	Narasingh Prasad Laterite Stone Quarry	1000	1000	1000
16		Champajhar Laterite Stone Quarry-I	-	-	1000
17		Champajhar Laterite Stone Quarry-II	-	1000	1000
18		Lahanga Laterite Stone Quarry	1000	1000	1000
19		Munda Amba Laterite Stone Quarry-I	Nil	1000	1000
20		HALADIPADA LATERITE STONE QUARRY	-	-	-
21		Mundamba Laterite Stone Quarry -2	-	-	-
22		Gopinathpur Laterite Stone Quarry	-	-	-
23		Nijagarhtapang(Ka) Laterite and Morrum Quarry	-	-	-
24		Nijagarhtapang(Kha) Laterite and Morrum Quarry	-	-	-
25		Narasinghaprasad(Ka) Laterite and Morrum Quarry	-	-	-

26		Nijagarhtapang(Ga) Laterite and Morrum Quarry	-	-	-
27		Nijagarhtapang(Gha) Laterite and Morrum Quarry	-	-	-
28		Nijagarhtapang(Uan) Laterite and Morrum Quarry	-	-	-
29		Nijagarhtapang(Cha) Laterite and Morrum Quarry	-	-	-
30		Nijagarhtapang(Chha) Laterite and Morrum Quarry	-	-	-
31		Nijagarhtapang(Ja) Laterite and Morrum Quarry	-	-	-
32		Jhinkijhari(Ka) Laterite and Morrum Quarry	-	-	-
33		Jhinkijhari(Kha) Laterite and Morrum Quarry	-	-	-
34		Jhinkijhari(Ga) Laterite and Morrum Quarry	-	-	-
35		Narasinghaprasad(Kha) Laterite and Morrum Quarry	-	-	-
36		Narasinghaprasad(Ga) Laterite and Morrum Quarry	-	-	-
37		Chhatipur Laterite and Morrum Quarry	-	-	-
38		Dhaulimuhan Laterite and Morrum Quarry	-	-	-
39	Tangi	Damanbhuin Laterite Stone Quarry-A	-	1500	1500
40		Bariko Laterite Stone Quarry	1500	1500	1500
41		Olasingh Laterite Stone Quarry-B	2000	2000	2000
42		Jagatapur Laterite Stone Quarry	1500	1500	1500
43		Damanbhuin Laterite Stone Quarry-C	1800	1800	1800
44		Gayabandha Laterite Stone Quarry	-	1800	1800
45		Olasingh Laterite Stone Quarry-A	-	2000	2000
46		Nayakota Laterite Stone Quarry-A	1800	1800	1800
47		Olasingh Laterite Stone Quarry-C	2000	2000	2000
48		ARANGA LSQ-B	-	-	-
49		Talagada Kuhudi L.S.Q-7	-	-	-
50		Ramachandrapur Laterite Stone Quarry-2	-	-	-
51		ARANGA LSQ A	-	-	-
52		Ramachandrapur Laterite Stone Quarry-1	-	-	-

13. LIST OF LETTER OF INTENT (LOI) HOLDERS IN THE DISTRICT ALONG WITH ITS VALIDITY AS PER THE FOLLOWING FORMAT.

Sl.No.	Name of the Mineral	Name of the Lessee	Address & Contact No. of Letter of Intent Holder	Letter of Intent Grant Order No. & date	Area of Mining lease to be allotted	Validity of LOI	Use(Captive/Non-Captive)	Location of the Mining lease (Latitude & Longitude)
1	2	3	4	5	6	7	8	9
1	Uttareswar L.S.Q	Sri Durga Prasana Nayak	At-N-4/208,IRC Village, Ps-Nayapalli,Bhubaneswar, Dist-Khordha	692 & 12.02.2021	9.4Ac/3.80Ha	3months to 2years	Non-Captive	Mouza:- Uttareswar, Khata No-306(AJA), Plot No-337, Kissam-Patita Lat-20.15 Long-85.459

** The selected bidder shall be required to execute quarry lease in Form-N within three weeks from the date of intimation of his selection, if the approval of the mining plan and environment clearance has been obtained before auction, and in other cases, three months from the date of intimation, failing which, the intimation shall stand cancelled and the security deposit shall stand forfeited:*

*Provided that the Controlling Authority may, for genuine and sufficient reasons, extend the said period, if it is satisfied that the delay in execution of lease deed is not due to reasons attributable to the selected bidder (See **Rule-27(13) of OMMCR-2016**).*

14.TOTAL MINERAL RESERVE AVAILABLE IN THE DISTRICT.

SI No.	Name of Source with Location	Lease area of non-operational & proposed quarries in m2	Average thickness of lateritic strata for non-operational & proposed quarries in m	Geological reserve of operational quarries as per approved mining plan /mineral potential of non-operational & proposed source as per field observation(in m3)
Name of Tahasil:-Begunia				
A1	Routapada LSQ Mouza:-Routapada ,Khata No-1008, Plot No-1486, Kissam-Patita Lat- 20°09'36.74"N to 20°09'43.51"N Long-85°28'02.35"E to 85°28'14.21"E	NA	NA	2,65,482
A2	Phulachhanchuni LSQ Mouza:- Phulachhanchuni, Khata No-199, Plot No-219, Kissam-Patharbani Lat- 20°11'05.98"N to 20°11'11.01"N Long-85°31'31.92"E to 85°31'41.17"E	NA	NA	130020
A3	Balibereni LSQ Mouza:-Baliberni , Khata No-619, Plot No-497, Kissam-Bagayat-II Lat-20°07'45.09"N to 20°07'54.92"N Long-85°27'55.08"E to 85°28'00.17"E	NA	NA	73989
A4	Uttareswar L.S.Q Mouza:- Uttareswar, Khata No-306(AJA), Plot No-337, Kissam-Patita Lat- 20.15 Long-85.459	38000	3	114000
A5	Patimala LSQ(8/512) Mouza:- Patimala, Khata No-153, Plot No-8, Kissam-Bagayat-I Lat- 20.147 Long-85.5	20000	3	60000
A6	Balibereni LSQ(498) Mouza:- Patimala, Khata No-153, Plot No-8/512, Kissam-Bagayat-I Lat- 20.148 Long-85.502	20000	3	60000

A7	Balibereni LSQ(498) Mouza:- Balibereni, Khata No-619, Plot No-498, Kissam-Patita Lat-20.133 Long-85.467	25000	3	75000
A8	Balibereni LSQ(510) Mouza:- Balibereni, Khata No-619, Plot No-510, Kissam-Patita Lat- 20.132 Long-85.469	25000	3	75000
A9	Dingara LSQ(1756) Mouza-Dingara, Khata-475/4, Plot-1756,Kissam- Sarada Anajalasechita-III, Lat- 20.158 , Long- 85.463	3030	1.5	4545
A10	Dakhineswara(Gha) Laterite and Morrum Quarry Mouza:-Dakhineswar , Khata No-536/3, Plot No-240 ,Kissam- P.Patita Lat- 20°09'33.14"N to 20°09'44.88"N Long-85°29'34.06"E to 85°29'41.70"E	NA	NA	193915
A11	Dakhineswara(Ka) Laterite and Morrum Quarry Mouza-Dakhineswar, Khata no.536/3, Plot no.238(P),Kissam- Patita ,Lat- 20.164 Long-85.494	32200	3	96600
A12	Dakhineswara(Kha) Laterite and Morrum Quarry Mouza-Dakhineswar, Khata no.536/3, Plot no.238(P), Kissam- Patita , Lat- 20.164 , Long-85.494	38900	3	116700
A13	Dakhineswara(Ga) Laterite and Morrum Quarry Mouza- Dakhineswar,Khata no.536/3, Plot no.234(P),229(P), Kissam-P.Patita , Lat- 20.161 , Long-85.492	87500	3	262500
A14	Dakhineswara(Uan) Laterite and Morrum Quarry Mouza- Dakhineswar,Khata no.536/3, Plot no.465(P),236(P), Kissam- P.Patita , Lat- 20.156 , Long-85.491	52800	3	158400
A15	Dakhineswara(Cha) Laterite and Morrum Quarry Mouza- Dakhineswar,Khata no.536/3, Plot no.242(P),243(P), Kissam- bagayat-II , Lat-20.155 , Long-85.494	42900	1.5	64350

A16	Dakhineswara(Chha) Laterite and Morrum Quarry Mouza- Dakhineswar, Khata no.536/3, Plot no.247(P), Kissam- P.Patita , Lat-20.157 , Long-85.494	31900	2	63800
A17	Dakhineswara(Ja) Laterite and Morrum Quarry Mouza- Dakhineswar, Khata no.536/3, Plot no.248(P), Kissam- P.Patita , Lat-20.157 , Long-85.495	27300	3	81900
A18	Dakhineswara(Jha) Laterite and Morrum Quarry Mouza- Dakhineswar, Khata no.536/3, Plot no.249(P), Kissam- bagayat-II , Lat-20.154 , Long-85.497	70300	3	210900
A19	Dakhineswara(Nian) Laterite and Morrum Quarry Mouza- Dakhineswar, Khata no.536/3, Plot no.249(P), Kissam- bagayat-II , Lat-20.154 , Long-85.497	84000	3	252000
Name of Tahasil:-Khordha				
B1	Narasingh Prasad Laterite Stone Quarry Mouza:-Narasingh prasad , Khata No-383 Plot No-25(P), Kissam- Patita Lat-20°04'44.1"N to 20°04'38.0"N Long-85°35'03.8"E to 85°35'01.8"E	NA	NA	9923
B2	Champajhar Laterite Stone Quarry-I Mouza:-Champajhar , Khata No-448, Plot No-480(P), Kissam-Gochar Lat-20°04'02.1"N to 20°04'06.0"N Long-85°34'08.4"E to 85°34'12.4"E	NA	NA	8820
B3	Champajhar Laterite Stone Quarry-II Mouza:-Champajhar , Khata No-448, Plot No-327(P), Kissam-Gochar Lat-20°04'09.89"N to 20°04'13.10"N Long-85°34'14.32"E to 85°34'19.11"E	NA	NA	10612.5
B4	Lahanga Laterite Stone Quarry Mouza:- Lahanga, Khata No-571, Plot No-59, Kissam-Bagayata-II Lat-20°04'14.6"N to 20°04'14.6"N Long-85°32'32.5"E to 85°32'24.1"E	NA	NA	9402

B5	Munda Amba Laterite Stone Quarry-I Mouza:-Munda Amba , Khata No-456, Plot No-972(P), Kissam-Padia Lat- 20°1'55.059"N to 20°1'59.516"N Long- 85°32'4.285"E to 85°32'8.957"E	NA	NA	10702.5
B6	HALADIPADA LATERITE STONE QUARRY Mouza:-Haldipada , Khata No- 224(AJA), Plot No-94,104,102 Kissam- Grass Ground Lat- 20°10'55.01" to 20°11'02.02"N Long-85°34'46.01" to 85°34'54.02"E	NA	NA	23030.7
B7	Mundamba Laterite Stone Quarry -2 Mouza:- Mundamba, Khata No-458, Plot No-262 Kissam-Gochar Lat-20.044 Long-85.52	7360	3	22080
B8	Gopinathpur Laterite Stone Quarry Mouza:- Gopinathpur, Khata No-469, Plot No-659 Kissam-Gochar Lat-20.064 Long-85.614	3760	3	11280
B9	Narasinhaprasad LSQ(10) Mouza:- Narasinhaprasad, Khata No-386, Plot No-10 Kissam-Patita Lat- 20.078 Long- 85.582	21670	1.5	32505
B10	Kiajhari LSQ(1082) Mouza:-kiajhari, Khata No-731/1, Plot No-1082 Kissam- Patita Lat-20.094 Long-85.56	20000	1.5	30000
B11	Kiajhari LSQ(1401) Mouza:-kiajhari, Khata No-731/1, Plot No-1401 Kissam- Patita Lat- 20.095 Long-85.557	20000	1.5	30000
B12	Jhinkijhari LSQ(1330) Mouza:- Jhinkijhari, Khata No-600, Plot No-1330 Kissam-Puratana Patita Lat- 20.092 Long-85.611	50000	2	100000
B13	Madhapur LSQ(674) Mouza:- Madhapur, Khata No-439, Plot No-674 Kissam- Patita Lat- 20.127 Long-85.532	15000	1.5	22500

B14	Kaipadar LSQ(2647) Mouza-Kaipadar , Khata-825, Plot-2647, Kissam- Sarada Anjalsechita-III, Lat-20°07'22.68841" to 20°07 '27.09351" , Long-85°33'32.28829" to 85°33'36.91079"	8090	3	24270
B15	Jagannathpur LSQ(2/1112,13/1114,12/1113) Mouza- Jagannathpur , Khata-414/77, Plot- 2/1112,13/1114,12/1113 Kissam- Puratana Patita Lat- 20°03'53.66695" to 20°04'00.84102" , Long-85°34'35.42626" to 85°34'340.90854"	7370	3	22110
B16	Aranga LSQ(330) Mouza-Aranga , Khata-334, Plot-330,Kissam- P.Patita, Lat-20.223 , Long-85.633	45000	3	135000
B17	Malipada LSQ(15/1640,15/1641,15/1648,15/1262) Mouza-Malipada , Khata- 500/482,500/470,500/469 Plot- 15/1640,15/1641,15/1648,15/1262,Kissam-Sthitiban , Lat- , Long-	4589		
B18	Nijagarhtapang(Ka) Laterite and Morrum Quarry Mouza:- Nijagarhtapanga , Khata No-832/1, Plot No-2054(P) ,Kissam- Lat- 20°06'07.22"N to 20°06'16.50"N Long- 85°33'14.81"E to 85°33'25.61"E	NA	NA	123430
B19	Nijagarhtapang(Kha) Laterite and Morrum Quarry Mouza:- Nijagarhtapanga , Khata No-832/1, Plot No- 2056(P),Kissam- Lat- 20°04'57.21"N to 20°05'04.03"N Long- 85°36'09.68"E to 85°36'18.22"E	NA	NA	83485
B20	Narasinghaprasad(Ka) Laterite and Morrum Quarry Mouza:- Narasinghaprasad , Khata No-377/6, Plot No-76 ,Kissam- Patita Lat- 20°04'24.12"N to 20°04'30.43"N Long- 85°35'33.91"E to 85°35'46.87"E	NA	NA	233910

B21	Nijagarhtapang(Ga) Laterite and Morrum Quarry Mouza:- Nijagarhtapanga , Khata No-832/1, Plot No-2052(P) ,Kissam-P.Patita Lat-20.086 Long-85.602	76520	1.5	114780
B22	Nijagarhtapang(Gha) Laterite and Morrum Quarry Mouza:- Nijagarhtapanga , Khata No-832/1, Plot No-2052(P) ,Kissam-P.Patita Lat-20.086 Long-85.602	85300	1.5	127950
B23	Nijagarhtapang(Uan) Laterite and Morrum Quarry Mouza:- Nijagarhtapanga , Khata No-832/1, Plot No-834(P) ,Kissam-P.Patita Lat-20.082 Long-85.586	63650	1.5	95475
B24	Nijagarhtapang(Cha) Laterite and Morrum Quarry Mouza:- Nijagarhtapanga , Khata No-832/1, Plot No-834(P) ,Kissam-P.Patita Lat-20.082 Long-85.586	100640	2	201280
B25	Nijagarhtapang(Chha) Laterite and Morrum Quarry Mouza:- Nijagarhtapanga , Khata No-832/1, Plot No- 834(p),Kissam-P.Patita Lat-20.082 Long-85.586	74700	2	149400
B26	Nijagarhtapang(Ja) Laterite and Morrum Quarry Mouza:- Nijagarhtapanga , Khata No-832/1, Plot No-834(P) ,Kissam-P.Patita Lat-20.082 Long-85.586	72560	2	145120
B27	Jhinkijhari(Ka) Laterite and Morrum Quarry Mouza:-Jhinkijhari , Khata No-600, Plot No-1301 ,Kissam-P.patita Lat-20.094 Long-85.608	68390	2	136780
B28	Jhinkijhari(Kha) Laterite and Morrum Quarry Mouza:-Jhinkijhari , Khata No-557/7, Plot No-1332(P) ,Kissam-P.Patita Lat-20.094 Long-85.61	108050	2	216100
B29	Jhinkijhari(Ga) Laterite and Morrum Quarry Mouza:-Jhinkijhari , Khata No-600, Plot No-1330(P) ,Kissam-P.Patita Lat-20.091 Long-85.611	79720	1.5	119580

B30	Narasinghaprasad(Kha) Laterite and Morrum Quarry Mouza:- Narasinghaprasad , Khata No-377/6, Plot No-205(P) ,Kissam-Patita Lat- 20.071 Long-85.588	78990	1.5	118485
B31	Narasinghaprasad(Ga) Laterite and Morrum Quarry Mouza:- Narasinghaprasad , Khata No-377/6, Plot No- 205(P),Kissam-Patita Lat- 20.071 Long-85.588	67580	1.5	101370
B32	Chhatipur Laterite and Morrum Quarry Mouza:-Chhatipur , Khata No-17, Plot No-1503 ,Kissam-Patita Lat-20.102 Long-85.64	56650	2	113300
B33	Dhaulimuhan Laterite and Morrum Quarry Mouza:-Dhaulimuhan , Khata No-667/1, Plot No-107 ,Kissam- Patita(Ghasa Padia) Lat-20.079 Long- 85.595	123630	3	370890
B34	Jaganathpur LSQ(1) Mouza:- Jaganathpur , Khata No-494, Plot No-1 ,Kissam- Bagayat-II Lat- 20.066 Long- 85.576	3190	1	3190
B35	Jaganathpur LSQ(8) Mouza:- Jaganathpur , Khata No-494, Plot No-8 ,Kissam- Puratana Patita Lat- 20.065 Long-85.576	6000	1	6000
B36	Jaganathpur LSQ(35) Mouza:- Jaganathpur , Khata No-494, Plot No- 35 ,Kissam- Puratana Patita Lat- 20.065 Long-85.579	6000	1	6000
B37	Narasinghaprasad LSQ(205) Mouza:- Narasinghaprasad , Khata No-377/6, Plot No-205,Kissam- Patita Lat-20.071 Long-85.586	50000	1.5	75000
B38	Deultangi LSQ(1) Mouza:-Deultangi , Khata No-456/2, Plot No-1,Kissam- Patita Lat- 20.146 Long-85.565	50000	3	150000

B39	Kiajhari LSQ(1572) Mouza:-Kiajhari, Khata No-731/1, Plot No-1572,Kissam-Bagayat-II Lat- 20.085 Long-85.567	10319	3	30957
B40	Kiajhari LSQ(1786) Mouza:-Kiajhari, Khata No-731/1, Plot No-1786,Kissam-Patita Lat- 20.085 Long-85.569	50000	3	150000
B41	Durgapur LSQ(764) Mouza:-Durgapur, Khata No-312/2, Plot No-764,Kissam-Patita Lat- 20.098 Long-85.616	50000	3	150000
B42	Durgapur LSQ(779) Mouza:-Durgapur, Khata No-312/2, Plot No-779,Kissam-Bagayat-I Lat- 20.095 Long-85.618	31800	3	95400
B43	Nijgartapang LSQ(1056) Mouza:-Nijgartapang, Khata No-832/1, Plot No-1056,Kissam- P.Patita Lat- 20.083 Long-85.6	50000	3	150000
B44	Bajapur LSQ(1884) Mouza:-Bajapur, Khata No-888/3, Plot No-1884,Kissam-Patita Lat- 20.121 Long-85.608	21800	3	65400
B45	Madhapur LSQ(378) Mouza:-Madhapur, Khata No-434/1, Plot No-378,Kissam- Patita Lat- 20.131 Long-85.535	25000	2	50000
B46	Madhapur LSQ(373) Mouza:-Madhapur, Khata No-434/1, Plot No-373,Kissam- Patita Lat- 20.131 Long-85.532	25000	3	75000
B47	Madhapur LSQ(673) Mouza:-Madhapur, Khata No-434/1, Plot No-673,Kissam- Patita Lat- 20.125 Long-85.533	35000	3	105000
Name of Tahasil:-Tangi				
C1	Damanbhuin Laterite Stone Quarry-A Mouza:-Damanbhuin , Khata No-708, Plot No-2161(P) Kissam-Gochar Lat-20°03'18.47"N to 20°03'24.95"N Long-85°31'35.534"E to 85°31'49.348"E	NA	NA	62076

C2	Bariko Laterite Stone Quarry Mouza:- Bariko , Khata No-270, Plot No-673 Kissam-Pathar Chatan Lat- 19°55'43.336"N to 19°55'37.168"N Long- 85°21'22..715" to 85°21'19.117"E	NA	NA	12409
C3	Olasingh Laterite Stone Quarry-B Mouza:-Olasingh , Khata No-372, Plot No-593(P) Kissam-Gochar Lat- 20°03'35.214"N to 20°03'20.847"N Long- 85°30'53.174"E to 85°30'45.619"E	NA	NA	75000
C4	Jagatapur Laterite Stone Quarry Mouza:-Jagatapur , Khata No-392, Plot No-262 Kissam-Pathar Tangi Lat- 20°00'46.1"N to 20°00'40.4"N Long- 85°31'00.1"E to 85°30'55.1"E	NA	NA	15033
C5	Damanbhuin Laterite Stone Quarry-C Mouza:-Damanbhuin , Khata No-705, Plot No-731(P) Kissam-Patita Lat- 20°04'09.044"N to 20°03' 57.351"N Long- 85°32'00.816"E to 85°31'52.079"E	NA	NA	106872
C6	Gayabandha Laterite Stone Quarry Mouza:-Gayabandha , Khata No-338, Plot No-763 Kissam-Puratanapatita Lat-20°04'20.7"N to 20°04'33.4"N Long- 85°31'15.0"E to 85°31'31.8"E	NA	NA	74912
C7	Olasingh Laterite Stone Quarry-A Mouza:- Olasingh, Khata No-372, Plot No-337(P) Kissam-Gochar Lat- 20°04'02.561"N to 20°03'49.161"N Long- 85°29'55.24"E to 85°29'47.196"E	NA	NA	75000
C8	Nayakota Laterite Stone Quarry-A Mouza:-Nayakota , Khata No-293, Plot No-440 Kissam-Puratanapatita Lat- 20°04'25.1"N to 20°04'18.9"N Long- 85°30'25.5"E to 85°30'14.8"E	NA	NA	75000
C9	Olasingh Laterite Stone Quarry-C Mouza:-Olasingh , Khata No-372, Plot No-541(P) Kissam-Gochar Lat- 20°03'59.852"N to 20°03'51.590"N Long- 85°29'41.643"E to 85°29'29.773"E	NA	NA	75000

C10	ARANGA LSQ-B Mouza:-Aranga , Khata No-518, Plot No-1049(P) Kissam- Puratanapatita Lat- 20°04'07.0"N to 20°04'16.9"N Long-85°29'18.6"E to 85°29'27.7"E	NA	NA	74958
C11	Talagada Kuhudi L.S.Q-7 Mouza:- Talagada , Khata No-226, Plot No-283 Kissam-Puratanapatita Lat- 19°53'38.90"N to 19°53'45.03"N Long- 85°21'02.49"E to 85°21'09.90"E	NA	NA	52064
C12	Ramachandrapur Laterite Stone Quarry-2 Mouza:-Ramachandrapur , Khata No-465, Plot No-640 Kissam- Pathara Tangi Lat- 19.931 Long-85.358	19520	2	39040
C13	ARANGA LSQ A Mouza:- Aranga, Khata No-518, Plot No-1049(P) Kissam- Patita Lat-20°04'00.1"N to 20°04'09.2"N Long-85°29'22.7"E to 85°29'35.2"E	NA	NA	82781
C14	Ramachandrapur Laterite Stone Quarry-1 Mouza:-Ramachandrapur , Khata No-463, Plot No-651 Kissam- Pathara Tangi Lat- 19.931 Long-85.359	3520	1.5	5280
C15	Gobindprasad LSQ(47,41) Mouza:- Gobindprasad, Khata No-164, Plot No- 47,41 Kissam-Bagayat-II Lat- 20.018 & 20.019 Long-85.46 & 85.46	7160	3	21480
C16	Ratamati LSQ(995) Mouza:- Ratamati, Khata No-350, Plot No-995 Kissam- Pathar Bani Lat- 20.014 Long-85.485	22760	1	22760
C17	Badapokharia LSQ(1126) Mouza:- Badapokharia, Khata No-1362, Plot No-1126 Kissam-P. Patita Lat- 19.988 Long-85.478	16870	1	16870
C18	Badapokharia LSQ(1147) Mouza:- Badapokharia, Khata No-1362, Plot No-1147 Kissam-P. Patita Lat- 19.987 Long-85.477	16490	1	16490
C19	Talagara_ Kuhudi LSQ(510) Mouza:- Talagara_ Kuhudi, Khata No-226, Plot	50000	3	150000

	No-510 Kissam-P.Patita Lat- 19.89 Long-85.348			
C20	BHOBARA LSQ(21) Mouza:- Bhobara, Khata No-217, Plot No-21 Kissam- Puratana Patita Lat- 19.955 Long- 85.369	19850	3	59550
C21	RAMACHANDRAPUR LSQ(639) Mouza:- Ramachandrapur, Khata No- 465, Plot No-639 Kissam-Pathar tangi Lat- 19.932 Long-85.356	17150	2	34300
C22	Olasingh LSQ(271) Mouza:- Olasingh , Khata No-370, Plot No-271 Kissam- P.Patita Lat- 20.064 Long-85.496	39700	1.5	59550
C23	Olasingh LSQ(430) Mouza:- Olasingh , Khata No-370, Plot No-430 Kissam- Bagayat-II Lat- 20.065 Long-85.502	13590	1.5	20385
C24	Nijagara_Kuhudi LSQ(637) Mouza:- Nijagara_Kuhudi , Khata No-800, Plot No-637 Kissam-P.Patita Lat- 19.881 Long-85.351	50000	3	150000
C25	Rasulpur LSQ(464) Mouza:- Rasulpur , Khata No-286, Plot No-464 Kissam- P.Patita Lat- 19.953 Long-85.461	20000	2	40000
C26	Bariko LSQ(574) Mouza:- Bariko , Khata No-213/66, Plot No-574 Kissam- B.F-2 Lat- 19.932 Long-85.354	2117	3	6351
C27	Ramachandrapur LSQ(679/16) Mouza-Ramachandrapur , Khata- 575/72, Plot-679/16, Kissam- Bagayat-II, Lat- 19.933 , Long-85.359	8090	3	24270
C28	Tankol LSQ(739,739/1772,739/1773) Mouza-Tankol , Khata-325, Plot- 739,739/1772,739/1773 Kissam- Sarada Anjalsechita-II, Lat- 20.039 , Long- 85.442	1980	2	3960

C29	Tankol LSQ(740) Mouza-Tankol , Khata-324, Plot-740,Kissam- Sarada Anjalsechita-II, Lat- 20.039 , Long- 85.441	1740	2	3480
C30	Sahadaghai LSQ(652,653) Mouza- Sahadaghai , Khata-179, Plot- 652,653,Kissam- Sarada Anjalsechita-II, Lat- 20°01'30.52668" to 20°06'32.98872" , Long-85°26'12.56244" to 85°26'13.72164"	5940	2	11880
C31	Olasingh LSQ(386) Mouza-Olasingh , Khata-266/44, Plot-386,Kissam- Biali, Lat- 20°03'58.89345" to 20°04'02.82710" , Long-85°30'11.94434" to 85°30'15.76664"	7500	2	15000
C32	Damanbhuin LSQ(942/2196) Mouza- Damanbhuin , Khata-669/87, Plot- 942/2196,Kissam- Patita, Lat- 20°03'33.09768" to 20°03'34.77996" , Long-85°31'36.17544" to 85°31'37.62264"	2020	3	6060
C33	Patrapada LSQ(228/268) Mouza- Patrapada , Khata-96/93, Plot- 228/268,Kissam- Sarada-III, Lat- 19°58'17.65020" to 19°58'19.47900" , Long-85°27'21.94092" to 85°27'23.77512"	1940	1.5	2910
C34	Patrapada LSQ(229) Mouza- Patrapada , Khata-96/96, Plot- 229,Kissam- Sarada-III, Lat-- 19°58'14.59164" to 19°58'16.79232" , Long-85°27'17.45496" to 85°27'19.20276"	2030	1	2030
C35	Nalasingh LSQ(631) Mouza-Nalasingh, Khata-519, Plot-631,Kissam- Bagayata- II, Lat-19.955, Long- 85.369	10310	3	30930
C36	Nuagaon LSQ(18/735) Mouza- Nuagaon, Khata-148/147, Plot- 18/735,Kissam- Sarada- III, Lat-19.941, Long- 85.381	3560	1.5	5340

C37	Dinabandhupur LSQ(72/687,71/698) Mouza-Dinabandhupur, Khata- 130/127, Plot-72/687,71/698,Kissam- Puratana Patita, Lat-19.873, Long- 85.245	24200	2	48400
C38	TALAGADAKUHUDI LSQ(169) Mouza- TALAGADAKUHUDI, Khata-29, Plot- 169,Kissam- Sarad-III, Lat-19.898, Long- 85.353	6740	1	6740
C39	Bariko LSQ(606) Mouza-Bariko, Khata- 37, Plot-606,Kissam- Bajefasala-II, Lat- 19.93, Long- 85.353	3160	1.5	4740
C40	RAMACHANDRAPUR LSQ(828) Mouza-Ramachandrapur, Khata- 348/377, Plot-828,Kissam-Sarad-III, Lat- 19.933, Long-85.362	1870	2	3740
Name of Tahasil:-Bolagarh				
D1	Godipatana LSQ(124) Mouza:- Godipatana , Khata No-224, Plot No- 124 Kissam-Patita Lat- 20.158 Long- 85.449	23200	3	69600
D2	Chalanapara LSQ(128) Mouza:- Chalanapara , Khata No-184, Plot No- 128 Kissam-Mundia Lat- 20.206 Long- 85.237	30410	3	91230
D3	Gobardhanpur LSQ(151) Mouza:- Gobardhanpur , Khata No-365, Plot No-151 Kissam-Pahada Lat- 20.22 Long-85.221	45000	3	135000
D4	Nuapara LSQ(441) Mouza:- Nuapara , Khata No-161, Plot No-441 Kissam- Parbat Lat-20.206 Long-85.236	20000	3	60000
Name of Tahasil:-Jatani				
E1	Gopinathpur LSQ(127) Mouza:- Gopinathpur , Khata No-66, Plot No- 127 Kissam-Pathar Tangi Lat- 20.179 Long-85.708	20000	1	20000
E2	Gopinathpur LSQ(124) Mouza:- Gopinathpur , Khata No-67, Plot No-	20000	1	20000

	124 Kissam-Pathar Tangi Lat-20.181 Long-85.707			
E3	Burhangara LSQ(486) Mouza:- Burhangara , Khata No-460, Plot No- 486 Kissam-P.Patita Lat- 20.073 Long- 85.668	12000	1.5	18000
E4	Burhangara LSQ(761) Mouza:- Burhangara , Khata No-460, Plot No- 761 Kissam-P.Patita Lat- 20.071 Long- 85.668	15000	1.5	22500
E5	Burhangara LSQ(1068) Mouza:- Burhangara , Khata No-460, Plot No- 1068 Kissam-P.Patita Lat-20.074 Long- 85.669	15000	3	45000
E6	Kantia LSQ(4059) Mouza:- Kantia, Khata No-1036/53, Plot No-4059 Kissam-P.Patita Lat- 20.154 Long- 85.743	45000	1	45000
Name of Tahasil:-Chilika				
F1	Chhotarapursasan LSQ(285) Mouza:- Chhotarapursasan, Khata No-474, Plot No-285 Kissam-Patita Lat-19.827 Long- 85.302	45000	3	135000

N.B.-Reserve potential mentioned in the above table may vary with the mining plan as the assessment is done as per the prelim field observation, hence always approved mining plan reserve shall be considered as final reserve.

15. QUALITY /GRADE OF MINERAL AVAILABLE IN THE DISTRICT.

Due to less content of Alumina, the laterite of the district is suitable for construction of walls related boundary or houses after manual sizing of the slabs.

16. USE OF MINERAL.

Laterite of the district is used mainly for construction of walls related boundary or houses after manual sizing of the slab.

17. DEMAND AND SUPPLY OF THE MINERAL IN THE LAST THREE YEARS.

As per the data provided by the DDM the demand of the Laterite mineral in the district is as follows,

SI No	Department	2021-22 (Cum)	2022-23 (Cum)	2023-24 (Cum)
1	Superintending Engineer M.I. Division, Khordha	40.76	0.00	167.00
2	Superintending Engineer Prachi Division, Bhubaneswar	-	-	-
3	Executive Engineer BBSR, (R & B) Division No-V, BBSR	-	-	-
4	Executive Engineer Khordha, (R & B) Division	-	-	-
5	Executive Engineer BBSR, (R & B) Division No-IV, BBSR	-	-	-
6	Executive Engineer BBSR, (R & B) Division No-II	680	1036	1690

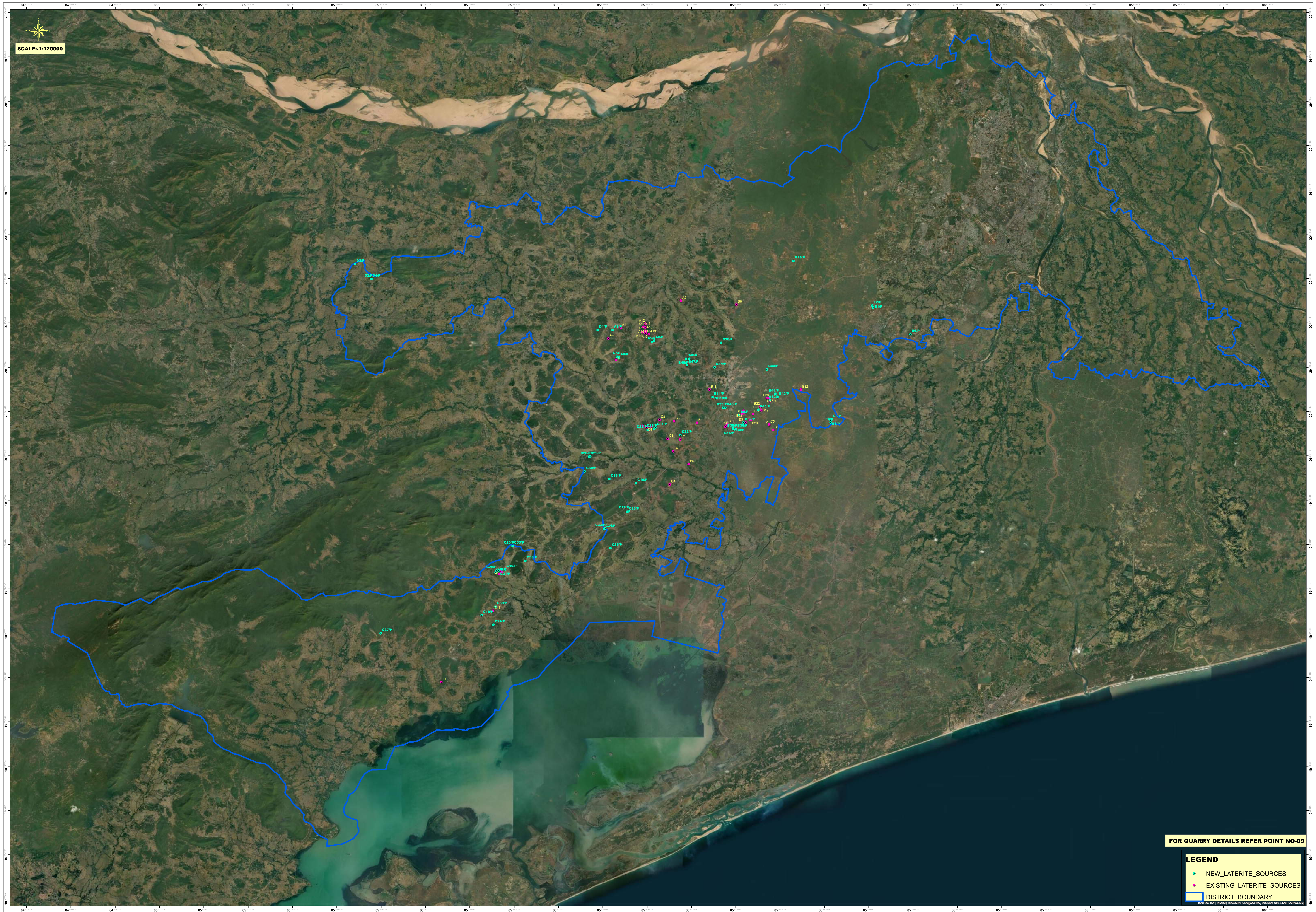
Supply of the mineral details are given in the production table.



FOR QUARRY DETAILS REFER POINT NO-09

LEGEND

- NEW_LATERITE_SOURCES
- EXISTING_LATERITE_SOURCES
- DISTRICT_BOUNDARY



19. DETAILS OF THE AREA OF WHERE THERE IS A CLUSTER OF MINING LEASES VIZ. NUMBER OF MINING LEASES, LOCATION (LATITUDE AND LONGITUDE).

Quarries existing within 500m radius are considered as cluster of Mining Leases as per the MoEF guide lines.

SI No.	Name of Tahasil	Cluster Name	Details of the area & Location	Number of Mining leases in Cluster
1	Khordha	Champajhar Cluster	Champajhar Laterite Stone Quarry-I Mouza:- Champajhar , Khata No-448, Plot No-480(P), Kissam-Gochar Lat- 20°04'02.1"N to 20°04'06.0"N Long- 85°34'08.4"E to 85°34'12.4"E	2
			Champajhar Laterite Stone Quarry-II Mouza:- Champajhar , Khata No-448, Plot No-327(P), Kissam-Gochar Lat- 20°04'09.89"N to 20°04'13.10"N Long- 85°34'14.32"E to 85°34'19.11"E	
2	Tangi	Olasingh-Aranga Cluster	Olasingh Laterite Stone Quarry-A Mouza:- Olasingh, Khata No-372, Plot No-337(P) Kissam-Gochar Lat- 20°04'02.561"N to 20°03'49.161"N Long-85°29'55.24"E to 85°29'47.196"E	6
			ARANGA LSQ A Mouza:- Aranga, Khata No-518, Plot No-1049(P) Kissam-Patita Lat-20°04'00.1"N to 20°04'09.2"N Long-85°29'22.7"E to 85°29'35.2"E	
			ARANGA LSQ-B Mouza:-Aranga , Khata No-518, Plot No-1049(P) Kissam-Puratanapatita Lat- 20°04'07.0"N to 20°04'16.9"N Long-85°29'18.6"E to 85°29'27.7"E	
			Olasingh LSQ(271) Mouza:- Olasingh , Khata No-370, Plot No-271 Kissam-P.Patita Lat- 20.064 Long-85.496	
			Olasingh LSQ(430) Mouza:- Olasingh , Khata No-370, Plot No-430 Kissam-Bagayat-II Lat- 20.065 Long- 85.502	
			Olasingh LSQ(386) Mouza-Olasingh , Khata-266/44, Plot-386,Kissam- Biali, Lat- 20°03'58.89345" to 20°04'02.82710" , Long-85°30'11.94434" to 85°30'15.76664"	
3	Khordha	Nijagarhtapan g Cluster-1	Nijagarhtapang(Ka) Laterite and Morrum Quarry Mouza:-Nijagarhtapanga , Khata No-832/1, Plot No-2054(P) ,Kissam- Lat-20°06'07.22"N to 20°06'16.50"N Long-85°33'14.81"E to 85°33'25.61"E	5
			Nijagarhtapang(Kha) Laterite and Morrum Quarry Mouza:-Nijagarhtapanga , Khata No-832/1, Plot No-2056(P),Kissam- Lat- 20°04'57.21"N to 20°05'04.03"N Long-85°36'09.68"E to 85°36'18.22"E	
			Nijagarhtapang(Ga) Laterite and Morrum Quarry Mouza:-Nijagarhtapanga , Khata No-832/1, Plot No-2052(P) ,Kissam-P.Patita Lat-20.086 Long-85.602	
			Nijagarhtapang(Gha) Laterite and Morrum Quarry Mouza:-Nijagarhtapanga , Khata No-832/1, Plot No-2052(P) ,Kissam-P.Patita Lat-20.086 Long-85.602	

			Nijgartapang LSQ(1056) Mouza:-Nijgartapang, Khata No-832/1, Plot No-1056,Kissam- P.Patita Lat- 20.083 Long-85.6	
4	Khordha	Nijagarhtapan g Cluster-2	Nijagarhtapang(Uan) Laterite and Morrum Quarry Mouza:-Nijagarhtapanga , Khata No-832/1, Plot No-834(P) ,Kissam-P.Patita Lat- 20.082 Long-85.586	4
			Nijagarhtapang(Cha) Laterite and Morrum Quarry Mouza:-Nijagarhtapanga , Khata No-832/1, Plot No-834(P) ,Kissam-P.Patita Lat- 20.082 Long-85.586	
			Nijagarhtapang(Chha) Laterite and Morrum Quarry Mouza:-Nijagarhtapanga , Khata No-832/1, Plot No-834(p),Kissam-P.Patita Lat- 20.082 Long-85.586	
			Nijagarhtapang(Ja) Laterite and Morrum Quarry Mouza:-Nijagarhtapanga , Khata No-832/1, Plot No-834(P) ,Kissam-P.Patita Lat- 20.082 Long-85.586	
5	Khordha	Jhinkijhari Cluster	Jhinkijhari(Ka) Laterite and Morrum Quarry Mouza:-Jhinkijhari , Khata No-600, Plot No-1301 ,Kissam-P.patita Lat-20.094 Long-85.608	4
			Jhinkijhari(Kha) Laterite and Morrum Quarry Mouza:-Jhinkijhari , Khata No-557/7, Plot No-1332(P) ,Kissam-P.Patita Lat-20.094 Long-85.61	
			Jhinkijhari(Ga) Laterite and Morrum Quarry Mouza:-Jhinkijhari , Khata No-600, Plot No-1330(P) ,Kissam-P.Patita Lat-20.091 Long-85.611	
			Jhinkijhari LSQ(1330) Mouza:-Jhinkijhari, Khata No-600, Plot No-1330 Kissam-Puratana Patita Lat- 20.092 Long-85.611	
6	Jatani	Burhangara Cluster	Burhangara LSQ(486) Mouza:- Burhangara , Khata No-460, Plot No-486 Kissam-P.Patita Lat- 20.073 Long-85.668	3
			Burhangara LSQ(761) Mouza:- Burhangara , Khata No-460, Plot No-761 Kissam-P.Patita Lat- 20.071 Long-85.668	
			Burhangara LSQ(1068) Mouza:- Burhangara , Khata No-460, Plot No-1068 Kissam-P.Patita Lat-20.074 Long-85.669	
7	Khordha	Kiajhari Cluster	Kiajhari LSQ(1082) Mouza:-kiajhari, Khata No-731/1, Plot No-1082 Kissam-Patita Lat-20.094 Long-85.56	2
			Kiajhari LSQ(1401) Mouza:-kiajhari, Khata No-731/1, Plot No-1401 Kissam-Patita Lat- 20.095 Long-85.557	
8	Khordha	Madhapur Cluster-1	Madhapur LSQ(378) Mouza:-Madhapur, Khata No-434/1, Plot No-378,Kissam- Patita Lat- 20.131 Long-85.535	2
			Madhapur LSQ(373) Mouza:-Madhapur, Khata No-434/1, Plot No-373,Kissam- Patita Lat- 20.131 Long-85.532	
9	Khordha	Madhapur Cluster-2	Madhapur LSQ(673) Mouza:-Madhapur, Khata No-434/1, Plot No-673,Kissam- Patita Lat- 20.125 Long-85.533	2

			Madhapur LSQ(674) Mouza:-Madhapur, Khata No-439, Plot No-674 Kissam- Patita Lat- 20.127 Long-85.532	
10	Begunia	Balibereni Cluster	Balibereni LSQ Mouza:-Baliberni , Khata No-619, Plot No-497, Kissam-Bagayat-II Lat-20°07'45.09"N to 20°07'54.92"N Long-85°27'55.08"E to 85°28'00.17"E Balibereni LSQ(498) Mouza:- Balibereni, Khata No-619, Plot No-498, Kissam-Patita Lat-20.133 Long-85.467 Balibereni LSQ(510) Mouza:- Balibereni, Khata No-619, Plot No-510, Kissam-Patita Lat- 20.132 Long-85.469	3
11	Begunia	Dakhineswar Cluster	Dakhineswar Laterite and Moorur quarry (Gha), Dakhineswar Mouza-Dakhineswar, Khata-536/3, Plot-240,Kissam- P.Patita , Lat- 20°09'33.14"N to 20°09'44.88"N , Long-85°29'34.06"E to 85°29'41.70"E Dakhineswara(Ka) Laterite and Moorur Quarry Mouza-Dakhineswar, Khata no.536/3, Plot no.238(P),Kissam-Patita ,Lat- 20.164 Long-85.494 Dakhineswara(Kha) Laterite and Moorur Quarry Mouza-Dakhineswar, Khata no.536/3, Plot no.238(P), Kissam-Patita , Lat- 20.164 , Long-85.494 Dakhineswara(Ga) Laterite and Moorur Quarry Mouza-Dakhineswar,Khata no.536/3, Plot no.234(P),229(P), Kissam-P.Patita , Lat-20.161 , Long-85.4191 Dakhineswara(Uan) Laterite and Moorur Quarry Mouza-Dakhineswar,Khata no.536/3, Plot no.465(P),236(P), Kissam- P.Patita , Lat- 20.156 , Long-85.491 Dakhineswara(Cha) Laterite and Moorur Quarry Mouza-Dakhineswar,Khata no.536/3, Plot no.242(P),243(P), Kissam- bagayat-II , Lat-20.155 , Long-85.494 Dakhineswara(Chha) Laterite and Moorur Quarry Mouza-Dakhineswar,Khata no.536/3, Plot no.247(P),Kissam- P.Patita , Lat-20.157 , Long-85.494 Dakhineswara(Ja) Laterite and Moorur Quarry Mouza-Dakhineswar,Khata no.536/3, Plot no.248(P), Kissam- P.Patita , Lat-20.157 , Long-85.495 Dakhineswara(Jha) Laterite and Moorur Quarry Mouza-Dakhineswar,Khata no.536/3, Plot no.249(P), Kissam- bagayat-II , Lat- 20.154 , Long-85.497 Dakhineswara(Nian) Laterite and Moorur Quarry Mouza-Dakhineswar,Khata no.536/3, Plot no.249(P), Kissam- bagayat-II , Lat-20.154 , Long-85.497	10

12	Khordha	Jagannathpur Cluster	Jagannathpur LSQ(2/1112,13/1114,12/1113) Mouza- Jagannathpur , Khata-414/77, Plot- 2/1112,13/1114,12/1113 Kissam- Puratana Patita Lat- 20°03'53.66695" to 20°04'00.84102" , Long- 85°34'35.42626" to 85°34'340.90854"	4
			Jaganathpur LSQ(1) Mouza:-Jaganathpur , Khata No-494, Plot No-1 ,Kissam- Bagayat-II Lat- 20.066 Long-85.576	
			Jaganathpur LSQ(8) Mouza:-Jaganathpur , Khata No-494, Plot No-8 ,Kissam- Puratana Patita Lat- 20.065 Long-85.576	
			Jaganathpur LSQ(35) Mouza:-Jaganathpur , Khata No-494, Plot No-35 ,Kissam- Puratana Patita Lat- 20.065 Long-85.579	
13	Jatani	Gopinathpur Cluster	Gopinathpur LSQ(127) Mouza:- Gopinathpur , Khata No-66, Plot No-127 Kissam-Pathar Tangi Lat- 20.179 Long-85.708	2
			Gopinathpur LSQ(124) Mouza:- Gopinathpur , Khata No-67, Plot No-124 Kissam-Pathar Tangi Lat-20.181 Long-85.707	
14	Tangi	Ramachandra pur Cluster	Ramachandrapur Laterite Stone Quarry-1 Mouza:- Ramachandrapur , Khata No-463, Plot No-651 Kissam-Pathara Tangi Lat- 19.931 Long-85.359	5
			Ramachandrapur Laterite Stone Quarry-2 Mouza:- Ramachandrapur , Khata No-465, Plot No-640 Kissam-Pathara Tangi Lat- 19.931 Long-85.358	
			RAMACHANDRAPUR LSQ(639) Mouza:- Ramachandrapur, Khata No-465, Plot No-639 Kissam-Pathar tangi Lat- 19.932 Long-85.356	
			Ramachandrapur LSQ(679/16) Mouza- Ramachandrapur , Khata-575/72, Plot-679/16, Kissam- Bagayat-II, Lat- 19.933 , Long-85.359	
			RAMACHANDRAPUR LSQ(828) Mouza- Ramachandrapur, Khata-348/377, Plot-828,Kissam- Sarad-III, Lat-, Long-	

20. DETAILS OF ECO-SENSITIVE AREA, IF ANY, IN THE DISTRICT.

Odisha has 19 Sanctuaries including Gahirmatha Marine Wildlife Sanctuary, one National Park (Bhitarkanika), one proposed National Park (Similipal) which have been notified under the provisions of Indian Wildlife (Protection) Act, 1972 for in-situ conservation. These Protected Areas constitute 10.37% of the total forest area and 5.36% of the total geographical area of the State. One large Zoological Park (**Nandankanan**), three Small Zoos and seven Mini Zoos have

been notified for ex-situ conservation and management of wildlife out side protected areas. The State has the singula distinction of having three stretches of mass nesting beaches of endangered Olive Ridley Sea turtles including the world's largest nesting ground if Olive Ridley Sea turtle, *Lepidochelys olivacea* at Gahirmatha. It has many natural wetlands including the largest wetland of Asia (**Chilika**) and Bhitarkanika which are declared as "Ramsar Sites". Six Eco-sensitive Zones finally notified (Kapilash, **Chandaka**, Balukhanda, Debrigarh, Kuldiha and Bhitarkanika). Hence only Eco-Sensitive Zone of Chandaka-Damapada Wildlife Sanctuary is located within the district.

21. IMPACT ON THE ENVIRONMENT (AIR, WATER, NOISE, SOIL, FLORA & FAUNA, LAND USE, AGRICULTURE, FOREST ETC.) DUE TO MINING ACTIVITY.

Generally, the environment impact can be categorized as either primary or secondary. Primary Impacts are those, which are attributed directly by the project. Secondary impacts are those which are indirectly induced and typically include the associated investment and changed pattern of social and economic activities by the proposed action.

The impact has been ascertained for the project assuming that the pollution due to mining activity has been completely spelled out under the base line environmental status for the entire ROM which is proposed to be exploited from the mines.

Impacts on Ambient Air

Mining operation are carried out by opencast manual, semi mechanized/ mechanized methods generating dust particles due to various activities likes, excavation, loading, handling of mineral and transportation. The air quality in the mining areas depends upon the nature and concentration of emissions and meteorological conditions. The major air pollutants due to mining activities include:-

- Particulate matter (dust) of various sizes.
- Gases, such as sulphur dioxide, oxides of nitrogen, carbon monoxide etc from machine & vehicular exhaust.

Dust is the single air pollutant observed in the open cast mines. Diesel operating drilling machines, blasting and movement of machineries/ vehicles produce NO_x , SO₂ and CO emissions, usually at low levels. Dust can be of significant nuance surrounding land user and potential health risk in some circumstances.

Impacts on Water

Sometimes the mining operation leads to intersect the water table causing ground water depletion. Due to the interference with surface water sources like river, nallah etc drainage pattern of the area is altered.

Noise impacts

Noise pollution mainly due to operation of machineries and occasional plying of machineries. These actives will create noise pollution in the surrounding area.

Impact on Land environment

The topography of the area will change certain changes due to mining activity which may cause some alteration to the entire eco system.

Impact on Flora & Fauna

The impact on biodiversity is difficult to quantify because of it's diverse and dynamic characteristics.

Mining activities generally result in the deforestation, land degradation, water, air and noise pollution which directly or indirectly affect the faunal and flora status of the project area.

However, occurrence and magnitude of these impacts are entirely dependent upon the project location, mode of operation and technology involved.

22. REMEDIAL MEASURES TO MITIGATE THE IMPACT OF MINING ON THE ENVIRONMENT.

Air

Mitigation measures suggested for air pollution controls are to be based on the baseline ambient air quality of the project/cluster area and would include measures such as:

- Dust generation shall be reduced by using sharp teeth of shovels.
- Wet drilling shall be carried out to contain the dust particles.
- Controlled blasting techniques shall be adopted.
- Water sprinkling on haul roads, service roads and overburden dumps will help in reducing considerable dust pollution.
- Proper and regular maintenance of mining equipment's have to be undertaken.
- Transport of materials in trucks are to be covered with tarpaulin.
- The mine pit water can be utilized for dust suppression in and around mine area.
- Information on wind direction and meteorology are to be considered during planning, so that pollutants, which cannot be fully suppressed by engineering techniques, will be prevented from reaching the nearby agricultural land, if any.
- Comprehensive greenbelt around overburden dumps and periphery of the mining projects/clusters has to be carried out to reduce fugitive dust transmission from the project area in order to create clean & healthy environment.

Water

- Construction of garland drains and settling tanks to divert surface run-off of the mining area to the natural drainage.
- Construction of check dams/ gully plugs at strategic places to arrest silt wash off from broken up area.
- Retaining walls with weep hole are to be constructed around the mine boundaries to arrest silt wash off.

- The mined out pits shall be converted in to the water reservoir at the end of mine life. This will help in recharging ground water table by acting as a water harvesting structure.
- Periodic analysis of mine pit water and ground water quality in nearby villages are to be undertaken.
- Domestic sewage from site office & urinals/latrines provided within ML/QL areas is to be discharged in septic tank followed by soak pits.

Noise

- Periodic maintenance of machineries, equipments shall be ensured to keep the noise generated within acceptable limit.
- Development of thick green belt around mining/cluster area, haul roads to reduce the noise.
- Provision of earplugs to workers exposed to high noise generating activities like blasting, excavation site etc. Worker and operators at work sites will be provided with earmuffs.
- Conducting periodical medical check-up of all workers for any noise related health problems.
- Proper training to personnel to create awareness about adverse noise related effects.
- Periodic noise monitoring at locations within the mining area and nearby habitations to assess efficacy of adopted control measures.
- During blasting optimum spacing, burden and charging of holes will be made under the supervision of competent qualified mines foreman, mate etc.

Biological Environment

- Development of green belt/gap filling saplings in the safety barrier left around the quarry area/ cluster area.
- Carrying out thick greenbelt with local flora species predominantly with long canopy laves on the inactive mined out upper benches.

- Development of dense poly culture plantation using local floral species in the mining areas at conceptual stage if the mine is not continued much below the general ground level.
- Adoption of suitable air pollution control measures as suggested above.
- Transport of materials in trucks covered with tarpaulin.

23. RECLAMATION OF MINED OUT AREA (BEST PRACTICE ALREADY IMPLEMENTED IN THE DISTRICT, REQUIREMENT AS PER RULES AND REGULATION, PROPOSED RECLAMATION PLAN).

Mine reclamation is the process of restoring land that has been mined to a natural or economically usable state. Although the process of mine reclamation occurs once mining is completed, the planning of mine reclamation activities occurs prior to a mine being permitted or started. Mine reclamation creates useful landscapes that meet a variety of goals ranging from the restoration of productive ecosystems to the creation of industrial and municipal resources. Modern mine reclamation minimizes and mitigates the environmental effects of mining.

In Khordha district Quarries which has been reported as exhausted shall be backfilled or fenced properly for ground water recharge. For active sources reclamation approach has been implemented in present date. Mainly two types of reclamation proposal are normally proposed i.e. Firstly Back filling of the exhausted mine by mine generated waste and capping of top soil for forest plantation and growth. Secondly proper fencing of quarried area and can be developed as water reservoir, fishery development or tourist attraction points after the life of the mine.

24. RISK ASSESSMENT & DISASTER MANAGEMENT PLAN.

The only risk involved related to mining of minor mineral excepting natural calamities is slope failure and probable accidents due to high and ill maintained bench walls. This can only be addressed through making of regular benches and undertaking mining in benching pattern.

The disaster management plan (DMP) is supposed be a dynamic, changing, document focusing on continual improvement of emergency response planning and arrangements.

The disaster management plan is to be aimed to ensure safety of life, protection of environment, protection of installation, restoration of production and savage operations in this same order of priorities. For effective implementation of the disaster management plan, it should be widely circulated through rehearsal/induction conducted by the respective department from time to time.

General responsibilities of employees' during an emergency:

During an emergency, it becomes more enhanced and pronounced when an emergency warning is raised, the worker in charge, should adopt safe and emergency shut down and attend to any prescribed duty. If no such responsibility is assigned, the workers should adopt a safe course to assembly point and wait instructions. He should not resort to spread panic. On the other hand, he must assist emergency personnel towards objectives of DMP.

Co-ordination with local authorities:

The Mine Manger who is responsible for emergency will always keep a jeep ready at site. In case of any eventuality, the victim will be taken to the nearby hospitals after carrying out the first aid at the site. The Manger should collect and have adequate information of the nearby hospitals, fire station, police

station, village panchayat heads, taxi stands, medical shops, district revenue authorities etc. and use them efficiently during the case of emergency.

25. DETAILS OF THE OCCUPATIONAL HEALTH ISSUES IN THE DISTRICT. (LAST FIVE-YEAR DATA OF NUMBER OF PATIENTS OF SILICOSIS & TUBERCULOSIS IS ALSO NEEDS TO BE SUBMITTED).

As per the guidelines of the Mine Rules 1995, occupational health safety has been stipulated by the ILO/WHO. The proponent's will take necessary precautions to fulfill the stipulations. Normal sanitary facilities have to be provided within the lease area. The management will carry out periodic health checkup of workers.

Occupational hazards involved in mines are related to dust pollution, noise pollution, blasting and injuries from moving machineries & equipment and fall from high places. DGMS has given necessary guidelines for safety against these occupational hazards. The management has to strictly follow these guidelines. All necessary first aid and medical facilities are to be provided to the workers. The mine shall be well equipped with personal protective equipment (PPE). Further, all the necessary ported equipments such as helmet, safety goggles, earplugs, earmuffs ets are to be provided to mine workers as per Mines Rules. All operators and mechanics are to be trained to handle fire fighting equipments.

• **TUBERCULOSIS DATA RNTCP KHORDHA**

YEAR	APR	MAY	JUN	JUL	AUG	SEP	OCT	NOV	DEC	JAN	FEB	MAR	TOTAL	SUCCESS
20-21	139	228	243	198	179	216	231	280	343	347	309	334	3047	2803
21-22	274	179	197	306	331	302	302	309	317	339	352	403	3611	3345
22-23	358	372	348	309	328	327	352	333	279	340	353	330	4029	3746
23-24	343	369	284	355	366	320	310	244	222	295	267	241	3616	3292
TOTAL	1114	1148	1072	1168	1204	1165	1195	1166	1161	1321	1281	1308	14303	13186
AVG.	279	287	268	292	301	291	299	292	290	330	320	327	3576	

There is no case of Silicosis found in khordha within the time frame mentioned above.



26. PLANTATION AND GREEN BELT DEVELOPMENT IN RESPECT OF LEASES ALREADY GRANTED IN THE DISTRICT.

As most of the minor mineral mines/quarries of the district are yet to be exhausted of their mineral content no sort of reclamation measures including plantation has been undertaken excluding gap plantation of local species in the peripheral safety zones of the quarries/ clusters and in some of the haul roads.

27. ANY OTHER INFORMATION.

Khordha District is having good potential of laterite and stone deposit, there are few decorative stones also reported. Minerals such as river sand, Morrur, Ordinary Earth, Brick earth etc. are also available in the district. Most of the building stone/black stone/road metals potentials are located in Khordha, Begunia and Tangi tahasils of the district. Others like laterite, murrum and earth are distributed in almost all tahasils.